

RESIDENTIAL RISER ASSEMBLY



Features

- Powder Coated Steel body construction
- Factory assembled and tested
- Vertical or horizontal installation



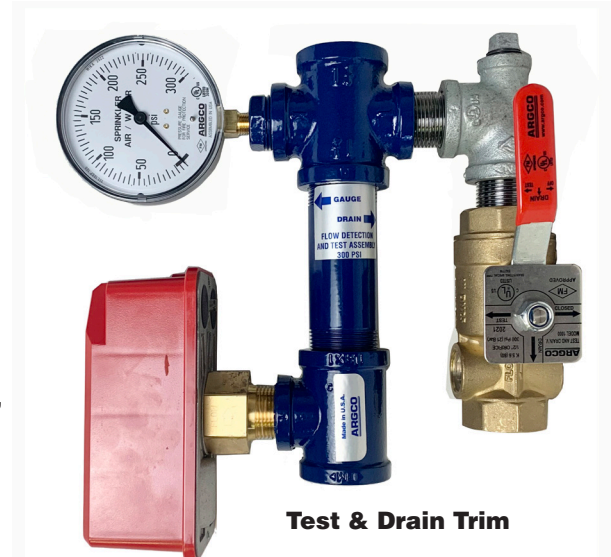
Description:

Argco's Residential Riser is a wet-pipe sprinkler system riser assembly consisting of a powder coated steel body, waterflow switch, pressure gauge, and drain.

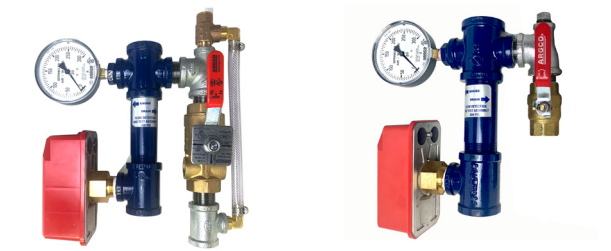
Triggering Flow is 12 gpm (45 lpm) nominal for the System Sensor waterflow switch and 10 gpm (38 lpm) or more for the Potter Electric waterflow switch.

The Residential Riser is intended for use in NFPA 13D and 13R systems, and is offered in 1", 1-1/4", 1-1/2", and 2" sizes.

The product is available with a variety of end configurations, and a choice of drain trims including a three position (off/test/drain) valve.



Test & Drain Trim



Pressure Relief Trim

Base Trim

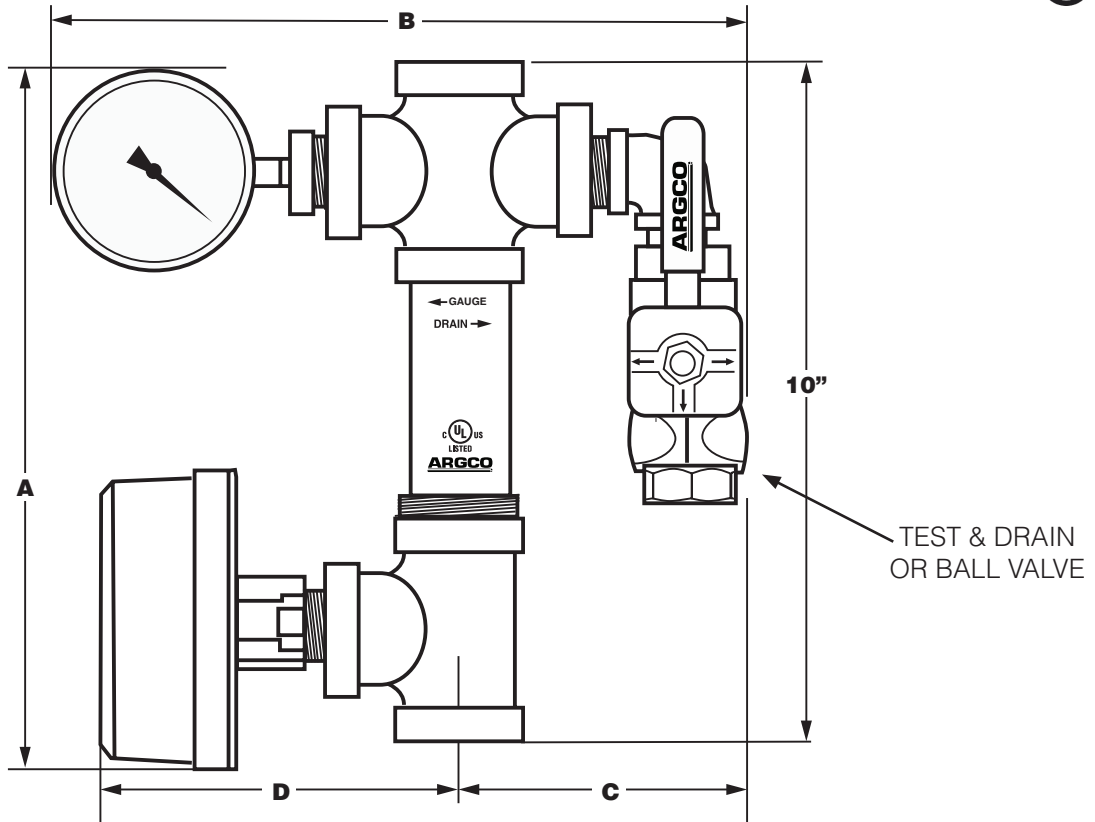
with System Sensor Flow Switch:

	Base Trim	Base Trim with Pressure Relief	Test & Drain	Pressure Relief with Test & Drain
SIZE	ITEM #	ITEM #	ITEM #	ITEM #
1"	6520350-0100	6520351-0100	6520352-0100	6520353-0100
1-1/4"	6520350-0125	6520351-0125	6520352-0125	6520353-0125
1-1/2"	6520350-0150	6520351-0150	6520352-0150	6520353-0150
2"	6520350-0200	6520351-0200	6520352-0200	6520353-0200

System Sensor® is a registered trademark of Honeywell International, Inc.

System No.		Location		Spec Section		Paragraph	
Submitted By		Date		Approved		Date	

RESIDENTIAL RISER ASSEMBLY



**BASIC ASSEMBLY WITH TEST & DRAIN
1-1/4" VERSION SHOWN**

NOMINAL SIZE	1"	1-1/4"	1-1/2"	2"
A	11-1/4"	11-1/4"	11-1/4"	11-1/4"
B	10"	10-7/16"	10-3/4"	11-1/8"
C	4-9/16"	4-3/4"	5"	5-1/4"
D	5-11/16"	5-17/8"	6"	6-3/8"
E	9-7/8"	9-7/8"	9-7/8"	9-7/8"

BASIC ASSEMBLY WITH BALL VALVE

NOMINAL SIZE	1"	1-1/4"	1-1/2"	2"
A	11-3/16"	11-3/16"	11-3/16"	11-3/16"
B	9-7/8"	10-7/8"	10-3/8"	10-15/16"
C	4-3/8"	4-7/8"	4-5/8"	5"
D	5-5/8"	5-3/4"	6-1/16"	6-1/4"
E	9-13/16"	9-13/16"	9-13/16"	9-13/16"

System No.		Location		Spec Section		Paragraph	
Submitted By		Date		Approved		Date	

Installation Model RR Residential Riser Manifolds with Pressure Relief Trim



Step 1. Remove 1/2". pipe plug from manifold tee. Inspect exposed female tee threads, remove thread sealant remnants or debris as necessary.

Step 2. Install Pressure Relief Valve in manifold tee, orienting valve outlet port perpendicular to, and facing away from, manifold body.

Step 3. Disconnect drain piping from threaded outlet of manifold drain valve, as applicable, and install 1 in. x close nipple in valve outlet.

Step 4. Install Reducing Tee onto 1 inch x close nipple, aligning tee branch outlet parallel with pressure relief valve outlet port. Reconnect drain piping to tee drain outlet as necessary.

Step 5. Install 1/2" Brass 90 x Barb in pressure relief valve outlet port and in reducing tee branch outlet.

Step 6. Install Flexible Hose by threading female ends onto 1/2" Brass 90 x Barb installed on relief valve outlet port and reducing tee branch outlet.

Note:

Assure Flexible Hose is not susceptible to being caught or snagged by other moving parts.

