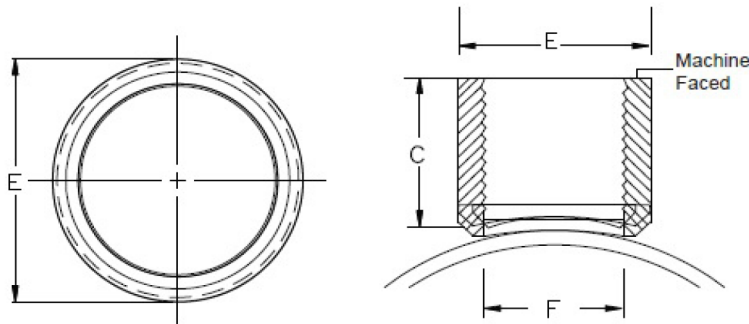


THREADED WELDED OUTLET



ARGCO welding outlets are manufactured from highly weldable steel which conforms to ASTM A 576/A 29. Designed specifically for use with automatic welding equipment. Threads are cut in accordance with ANSI B1.20.1 national standard for tapered threads.



OUTLET SIZE	RUN SIZE	ITEM CODE	Dimension C	Dimension E	Dimension F	HOLE SIZE
1/2"	1 1/4" - 1 1/2"	SL011	1.059"	1.063"	0.71"	0.74"
1/2"	2" - 2 1/2"	SL012	1.059"	1.063"	0.71"	0.74"
1/2"	2 1/2" - 8"	SL013	1.059"	1.063"	0.71"	0.74"
3/4"	1 1/4" - 1 1/2"	SL021	1.125"	1.313"	0.917"	0.95"
3/4"	2" - 2 1/2"	SL022	1.125"	1.313"	0.917"	0.95"
3/4"	2 1/2" - 8"	SL023	1.125"	1.313"	0.917"	0.95"
1"	1 1/4"	SL031	1.25"	1.57"	1.156"	1.186"
1"	1 1/2"	SL032	1.25"	1.57"	1.156"	1.186"
1"	2" - 2 1/2"	SL033	1.25"	1.57"	1.156"	1.186"
1"	3" - 4"	SL034	1.25"	1.57"	1.156"	1.186"
1 1/4"	1 1/2"	SL042	1.351"	1.90"	1.48"	1.51"
1 1/4"	2"-2-1/2"	SL043	1.351"	1.90"	1.48"	1.51"
1 1/4"	2 1/2"	SL044	1.359"	1.90"	1.48"	1.51"
1 1/4"	3" - 4"	SL045	1.362"	1.90"	1.48"	1.51"
1 1/2"	2"	SL052	1.426"	2.105"	1.635"	1.66"
1 1/2"	2 1/2"	SL053	1.511"	2.105"	1.635"	1.66"
1 1/2"	3"	SL054	1.573"	2.105"	1.635"	1.66"
1 1/2"	4"	SL055	1.619"	2.105"	1.635"	1.66"
1 1/2"	6" - 8"	SL056	1.619"	2.105"	1.635"	1.66"
2"	2 1/2"	SL062	1.283"	2.62"	2.113"	2.143"
2"	3"	SL063	1.408"	2.62"	2.113"	2.143"
2"	4"	SL064	1.513"	2.62"	2.113"	2.143"
2"	6"	SL066	1.615"	2.62"	2.113"	2.143"
2"	8"	SL067	1.662"	2.62"	2.113"	2.143"

System No.		Location		Spec Section		Paragraph	
Submitted By		Date		Approved		Date	