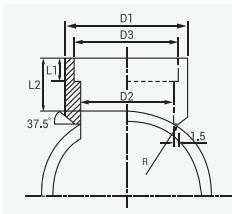
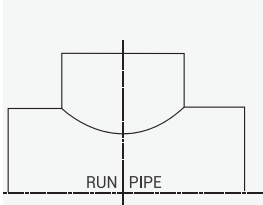
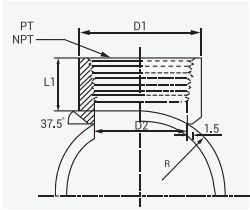


WELDED OUTLET THREADED



HOLE SIZE: Full inside diameter of outlet size

Butt welding ends complying with a national or international standard

Application Pipe type:
ASTM A53 | ASTM A106-B



Dimensions												
Nominal Outlet		Nominal Header		Length (L2)		Socket Length (L1)		Outside Diameter (D1)		Inside Diameter (D3)		Inside Diameter (D2)
Inch	mm	Inch	mm	Inch	mm	Inch	mm	Inch	mm	Inch	mm	Inch / mm
1/2"	15	1"	25	1.063"	27	0.377"	9.6	1.039"	26.4	1.039"	26.4	
		1-1/4"	32									
		1-1/2"	40									
		2"	50									
		2-1/2"	65									
		3"	80									
		4"	100									
		5"	125									
3/4"	20	1"	25	1.063"	27	0.5"	12.7	1.251"	31.8	1.251"	31.8	
		1-1/4"	32									
		1-1/2"	40									
		2"	50									
		2-1/2"	65									
		3"	80									
		4"	100									
		5"	125									
1"	25	1-1/4"	32	1.063"	27	0.5"	12.7	1.555"	39.5	1.555"	39.5	
		1-1/2"	40									
		2"	50									
		2-1/2"	65									
		3"	80									
		4"	100									
		5"	125									
		6"	150									
8"	200											
1-1/4"	32	2"	50	1.375"	35	0.5"	12.7	1.90"	48.3	1.90"	48.3	
		2-1/2"	65									
		3"	80									
		4"	100									
		5"	125									
		6"	150									
1-1/2"	40	2"	50	1.625"	41.5	0.5"	12.7	2.145"	54.5	2.145"	54.5	
		2-1/2"	65									
		3"	80									
		4"	100									
		5"	120									
		6"	150									
2"	50	2-1/2"	65	1.75"	44.5	0.625"	15.9	2.61"	66.3	2.61"	66.3	
		3"	80									
		4"	100									
		5"	120									
		6"	150									
		8"	200									
2-1/2"	65	3"	80	2.215"	56	0.625"	15.9	3.228"	82	3.228"	82	
		4"	100									
		5"	125									
		6"	150									
		8"	200									

CARBON
STEEL PIPE
40 I.D.

System No.		Location		Spec Section		Paragraph	
Submitted By		Date		Approved		Date	