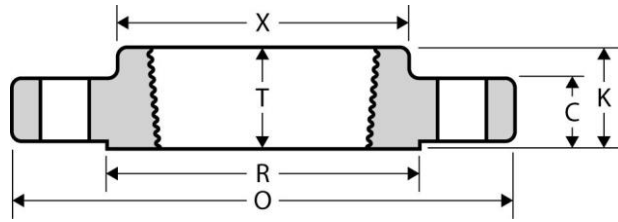




Threaded Flange  
**CLASS 150**  
Inches / Pounds



Nominal Pipe Size	Outside Diam. of Flange (O)	Thick. of Flange (C)	Diam. of Raised Face (R)	Diam. of Hub at Base (X)	Length thru Hub (Y)	Min. Thread Length (T)	Min. Counter Bore (Q)	No. of Holes	Diam. of Holes	Diam. of Bolts	Diam. of Bolt Circle	Approx. Weight (in Pounds)
1/2	3.50	0.38	1.38	1.19	0.62	0.62	—	4	0.62	0.50	2.38	1
3/4	3.88	0.44	1.69	1.50	0.62	0.62	—	4	0.62	0.50	2.75	2
1	4.25	0.5	2.00	1.94	0.69	0.69	—	4	0.62	0.50	3.12	2
1 1/4	4.62	0.56	2.50	2.31	0.81	0.81	—	4	0.62	0.50	3.50	3
1 1/2	5.00	0.63	2.88	2.56	0.88	0.88	—	4	0.62	0.50	3.88	3
2	6.00	0.69	3.62	3.06	1.00	1.00	—	4	0.75	0.62	4.75	5
2 1/2	7.00	0.82	4.12	3.56	1.12	1.12	—	4	0.75	0.62	5.50	7
3	7.50	0.88	5.00	4.25	1.19	1.19	—	4	0.75	0.62	6.00	8
3 1/2	8.50	0.88	5.50	4.81	1.25	1.25	—	8	0.75	0.62	7.00	11
4	9.00	0.88	6.19	5.31	1.31	1.31	—	8	0.75	0.62	7.50	13
5	10.00	0.88	7.31	6.44	1.44	1.44	—	8	0.88	0.75	8.50	15
6	11.00	0.94	8.50	7.56	1.56	1.56	—	8	0.88	0.75	9.50	19
8	13.50	1.06	10.62	9.69	1.75	1.75	—	8	0.88	0.75	11.75	30
10	16.00	1.13	12.75	12.00	1.94	1.94	—	12	1.00	0.88	14.25	43
12	19.00	1.19	15.00	14.38	2.19	2.19	—	12	1.00	0.88	17.00	64
14	21.00	1.32	16.25	15.75	2.25	2.25	—	12	1.12	1.00	18.75	90
16	23.50	1.38	18.50	18.00	2.50	2.50	—	16	1.12	1.00	21.25	98
18	25.00	1.5	21.00	19.88	2.69	2.69	—	16	1.25	1.13	22.75	130
20	27.50	1.63	23.00	22.00	2.88	2.88	—	20	1.25	1.12	25.00	165
24	32.00	1.82	27.25	26.12	3.25	3.25	—	20	1.38	1.25	29.50	220

*\* Dimensions conform to ASTM A/SA-105; ANSI B16.5*