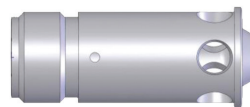
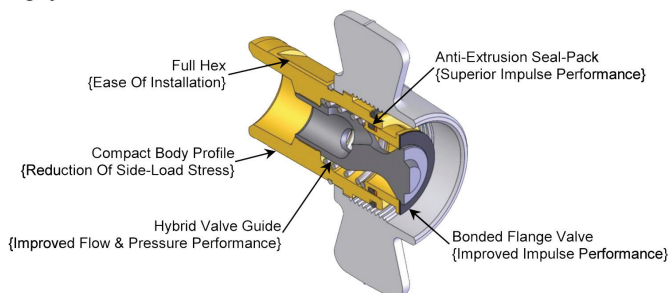




The Right Connection®

W-Series

Wingstyle Socket Features

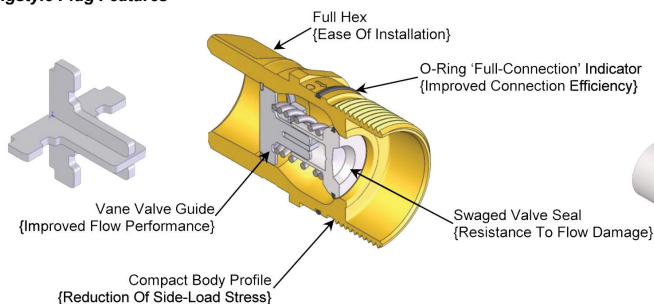


Industry 'Norm' Tubular Valve Guide
Versus
Hybrid Valve Guide



NEW
1/4" and 3/8"
body sizes

Wingstyle Plug Features



Application:

- oil field equipment, dump and live floor trailers, mobile equipment, submersible pumps

Sizes:

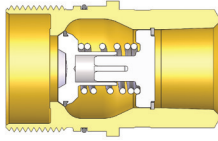
- 1/4" - 1 1/2"

Materials:

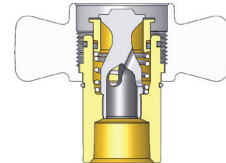
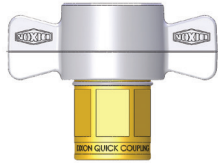
- brass body with steel wing nut or hex nut
- dust caps and dust plugs: steel body with stainless steel cable lanyard
- 1" body size available in all steel construction

Features:

- innovative hybrid valve design provides industry leading flow and pressure performance
- bonded flange valve and anti-extrusion seal-pack improves impulse performance
- full hex on both bodies for easy installation
- compact body profile
- o-ring connection indicator
- interchangeable with Eaton 5100-Series, Parker 6100-Series, Snap-Tite 78-Series and other compatible models



Body Size	Part Detail			Length		Maximum OD		Hex
	Part Number	Threads	Material	Inch	mm	Inch	mm	Inch
1/4"	W2F1-B	1/8"-27 NPTF	brass	1.88	47.8	1.04	26.3	0.938"
3/8"	W3F2-B	1/4"-18 NPTF	brass	2.3	58.4	1.25	31.8	1.250"
3/8"	W3F3-B	3/8"-18 NPTF	brass	2.4	61.0	1.25	31.8	1.250"
3/4"	W6F4-B	1/2" - 14 NPTF	brass	2.85	72.4	1.75	44.5	1.313"
3/4"	W6BF4-B	1/2" - 14 BSPP	brass	2.85	72.4	1.75	44.5	1.313"
3/4"	W6F6-B	3/4" - 14 NPTF	brass	2.85	72.4	1.75	44.5	1.313"
3/4"	W6BF6-B	3/4" - 14 BSPP	brass	2.85	72.4	1.75	44.5	1.313"
1"	W8F8-B	1" - 11 1/2 NPTF	brass	3.15	80.0	2.00	50.8	1.563"
1"	W8F8	1" - 11 1/2 NPTF	steel	3.15	80.0	2.00	50.8	1.563"
1"	W8BF8-B	1" - 11 BSPP	brass	3.15	80.0	2.00	50.8	1.563"
1 1/4"	W10F10-B	1-1/4" - 11 1/2 NPTF	brass	3.39	86.1	2.37	60.2	1.938"
1 1/4"	W10BF10-B	1-1/4" - 11 BSPP	brass	3.39	86.1	2.37	60.2	1.938"
1 1/2"	W12F12-B	1-1/2" - 11 1/2 NPTF	brass	3.74	95.0	2.73	69.3	2.250"
1 1/2"	W12BF12-B	1-1/2" - 11 BSPP	brass	3.74	95.0	2.73	69.3	2.250"



Body Size	Part Detail			Length		Maximum OD		Hex
	Part Number	Threads	Material	Inch	mm	Inch	mm	Inch
1/4"	2WF1-B	1/8"-27 NPTF	brass	2.00	50.8	3.00	76.2	0.630"
3/8"	3WF2-B	1/4"-18 NPTF	brass	2.33	59.2	3.45	87.6	0.810"
3/8"	3WF3-B	3/8"-18 NPTF	brass	2.33	59.2	3.45	87.6	0.810"
3/4"	6WF4-B	1/2" - 14 NPTF	brass	2.73	69.3	4.09	103.9	1.156"
3/4"	6WBF4-B	1/2" - 14 BSPP	brass	2.73	69.3	4.09	103.9	1.156"
3/4"	6WF6-B	3/4" - 14 NPTF	brass	2.73	69.3	4.09	103.9	1.156"
3/4"	6WBF6-B	3/4" - 14 BSPP	brass	2.73	69.3	4.09	103.9	1.156"
1"	8WF8-B	1" - 11 1/2 NPTF	brass	3.33	84.6	4.49	114.0	1.156"
1"	8WF8	1" - 11 1/2 NPTF	steel	3.33	84.6	4.49	114.0	1.156"
1"	8WBF8-B	1" - 11 BSPP	brass	3.33	84.6	4.49	114.0	1.156"
1 1/4"	10WF10-B	1-1/4" - 11 1/2 NPTF	brass	3.64	92.5	5.27	133.9	1.781"
1 1/4"	10WBF10-B	1-1/4" - 11 BSPP	brass	3.64	92.5	5.27	133.9	1.781"
1 1/2"	12WF12-B	1-1/2" - 11 1/2 NPTF	brass	3.67	93.2	5.35	135.9	2.109"
1 1/2"	12WBF12-B	1-1/2" - 11 BSPP	brass	4.08	103.6	5.35	135.9	2.109"

connect with us on



Dixon Quick Coupling

2925 Chief Court • Dallas, NC 28034
ph 800.839.8980 • fx 800.839.9022

dixonvalve.com

Made in the USA

