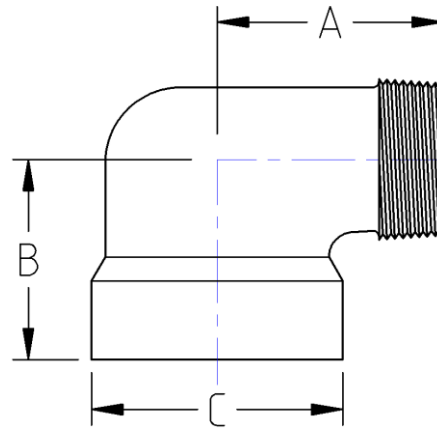




Threaded 90° Street Elbow  
**6000# Forged Steel**  
Inches / Pounds



Nominal pipe size	A	B	C	Approximate Weight (in Pounds)
1/2	1.88	1.38	1.75	1.06
3/4	2.25	1.75	2.00	1.74
1	2.62	2.00	2.44	3.16
1 1/4	2.87	2.12	2.75	3.94
1 1/2	3.31	2.50	3.31	6.47

**\*ASME B16.11**