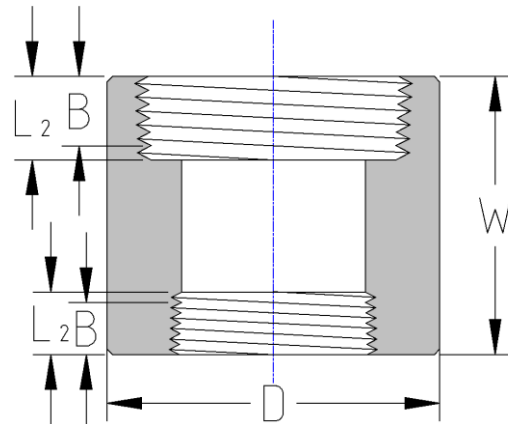




Threaded Reducing Coupling
6000# Forged Steel
Inches / Pounds



Size	D	W	Approximate Weight (in Pounds)
1½ x ½	3.00	3.12	4.42
1½ x ¾	3.00	3.12	4.42
1½ x 1	3.00	3.12	4.42
2 x ½	3.62	3.38	7.27
2 x 1	3.62	3.38	7.27
2 x 1½	3.62	3.38	7.27

***ASME B16.11**

****Dimension B is minimum length of perfect thread. The length of useful thread (B plus threads with fully formed roots and flat crests) shall not be less than L₂ (effective length of external thread) required by ASME B1.20.1**