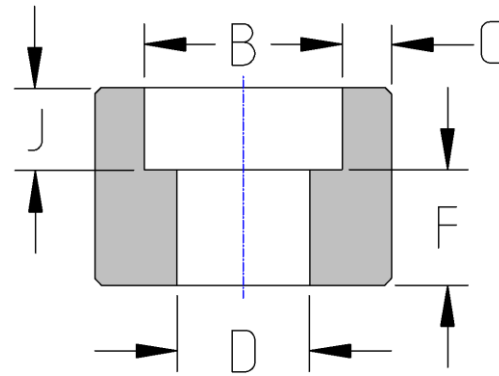




Socket Weld Half Coupling
3000# Forged Steel
Inches / Pounds



Nominal pipe size	B Max. Min.	C Avg. Min.	D Max. Min.	J Min.	F Tol. ±	Approximate Weight (in Pounds)
¼	0.575	0.149	0.394	0.38	0.62	0.14
	0.555	0.130	0.334		0.03	
⅜	0.710	0.158	0.523	0.38	0.69	0.18
	0.690	0.130	0.463		0.06	
½	0.875	0.184	0.652	0.38	0.88	0.21
	0.855	0.160	0.592		0.06	
¾	1.085	0.193	0.854	0.50	0.94	0.33
	1.065	0.168	0.794		0.66	
1	1.350	0.224	1.079	0.50	1.12	0.64
	1.330	0.196	1.019		0.08	
1 ¼	1.695	0.239	1.410	0.50	1.19	0.96
	1.675	0.208	1.350		0.08	
1 ½	1.935	0.250	1.640	0.50	1.25	1.22
	1.915	0.218	1.580		0.08	
2	2.426	0.273	2.097	0.62	1.62	2.10
	2.406	0.238	2.037		0.08	
2 ½	2.931	0.345	2.529	0.62	1.69	3.08
	2.906	0.302	2.409		0.10	
3	3.560	0.375	3.128	0.62	1.75	4.29
	3.535	0.327	3.008		0.10	
4	4.570	0.421	4.086	0.75	1.88	7.05
	4.545	0.368	3.966		0.10	

***ASME B16.11**