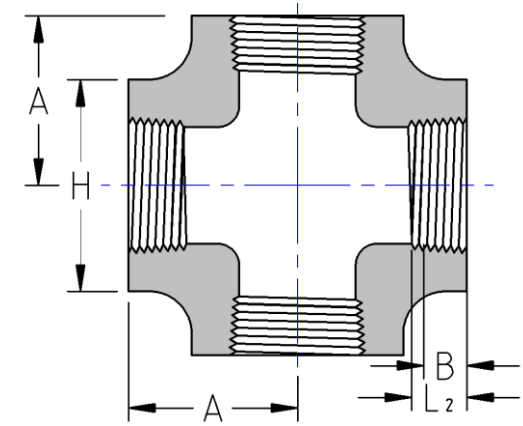




Threaded Cross  
**2000# Forged Steel**  
Inches / Pounds



Size	A	H	G <sup>1</sup> (Minimum)	B <sup>**</sup>	L <sub>2</sub> <sup>**</sup> (Minimum)	Approximate Weight (in Pounds)
1/8	0.81	0.88	0.125	0.25	0.2639	0.54
1/4	0.81	0.88	0.125	0.32	0.4018	0.52
3/8	0.97	1.00	0.125	0.36	0.4078	0.60
1/2	1.12	1.31	0.125	0.43	0.5337	0.84
3/4	1.31	1.50	0.125	0.50	0.5457	1.20
1	1.50	1.81	0.145	0.58	0.6828	1.67
1 1/4	1.75	2.19	0.153	0.67	0.7068	2.48
1 1/2	2.00	2.44	0.158	0.70	0.7235	3.41
2	2.38	2.97	0.168	0.75	0.7565	5.51
2 1/2	3.00	3.62	0.221	0.93	1.1380	16.6

**\*ASME B16.11**

**\*\*Dimension B is minimum length of perfect thread. The length of useful thread (B plus threads with fully formed roots and flat crests) shall not be less than L<sub>2</sub> (effective length of external thread) required by ASME B1.20.1**

**<sup>1</sup>Dimension G is the minimum wall thickness.**