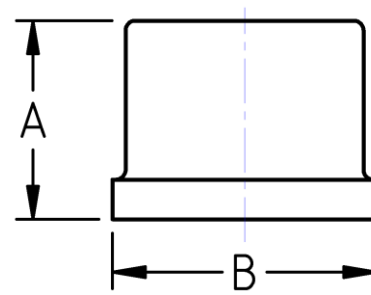




Threaded Cap Std Pattern
150# Cast Stainless Steel
Inches / Pounds



Nominal Pipe Size	End to End (A)	Outside Diameter (B)	Approx. Weight (in Pounds)
1/8"	0.61	0.63	0.03
1/4"	0.87	0.78	0.07
3/8"	0.96	0.99	0.12
1/2"	1.08	1.17	0.15
3/4"	1.10	1.43	0.23
1"	1.28	1.78	0.36
1-1/4"	1.29	2.09	0.55
1-1/2"	1.42	2.36	0.64
2"	1.48	2.91	1.00
2-1/2"	1.68	3.33	1.65
3"	1.87	4.33	2.9
4"	2.04	5.48	4.9

****The material composition and quality comply with ASTM A351/A351M "Standard Specification for Castings, Austenitic, for Pressure-Containing Parts"***

****NPT Threads on all fittings conform to ASME B1.20.1***