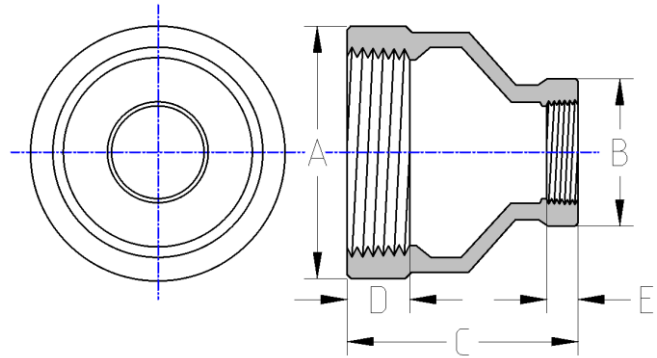




Threaded Reducing Coupling
MSS SP-114 Pattern
150# Cast Stainless Steel
Inches / Pounds



Nominal Pipe Size	Outside Diameter (A)	Outside Diameter (B)	End to End (C)	Internal Thread Length Min. (D)	Internal Thread Length Min. (E)	Nominal Metal Thickness**	Approx. Weight (in Pounds)
1/4" X 1/8"	0.850	0.768	1.012	0.32	0.25	0.09	0.06
3/8" X 1/8"	1.024	0.768	1.130	0.36	0.25	0.10	0.08
3/8" X 1/4"	1.024	0.850	1.130	0.36	0.32	0.10	0.08
1/2" X 1/8"	1.213	0.768	1.394	0.43	0.25	0.10	0.14
1/2" X 1/4"	1.213	0.850	1.394	0.43	0.32	0.10	0.17
1/2" X 3/8"	1.213	1.024	1.394	0.43	0.36	0.10	0.15
3/4" X 1/8"	1.416	0.768	1.512	0.50	0.25	0.12	0.20
3/4" X 1/4"	1.416	0.850	1.512	0.50	0.32	0.12	0.22
3/4" X 3/8"	1.416	1.024	1.512	0.50	0.36	0.12	0.21
3/4" X 1/2"	1.416	1.213	1.512	0.50	0.43	0.12	0.25
1" X 1/8"	1.791	0.768	1.634	0.58	0.25	0.13	0.33
1" X 1/4"	1.791	0.850	1.634	0.58	0.32	0.13	0.32
1" X 3/8"	1.791	1.024	1.634	0.58	0.36	0.13	0.32
1" X 1/2"	1.791	1.213	1.634	0.58	0.43	0.13	0.35
1" X 3/4"	1.791	1.416	1.634	0.58	0.50	0.13	0.40
1-1/4" X 1/8"	2.165	0.768	2.016	0.67	0.25	0.14	0.53
1-1/4" X 1/4"	2.165	0.850	2.016	0.67	0.32	0.14	0.53
1-1/4" X 3/8"	2.165	1.024	2.016	0.67	0.36	0.14	0.53
1-1/4" X 1/2"	2.165	1.213	2.016	0.67	0.43	0.14	0.53
1-1/4" X 3/4"	2.165	1.476	2.016	0.67	0.50	0.14	0.55
1-1/4" X 1"	2.165	1.791	2.016	0.67	0.58	0.14	0.59

***The material composition and quality comply with ASTM A351/A351M**

"Standard Specification for Castings, Austenitic, for Pressure-Containing Parts"

***NPT Threads on all fittings conform to ASME B1.20.1**

***Dimensions comply with MSS SP-114**

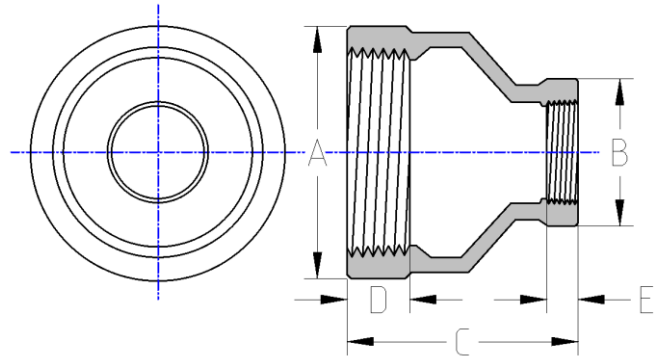
**** Patterns shall be designed to produce castings of metal thickness given in table. Metal thickness at no point shall be less than 90% of the nominal metal thickness value.**



Threaded Reducing Coupling
MSS SP-114 Pattern

150# Cast Stainless Steel

Inches / Pounds

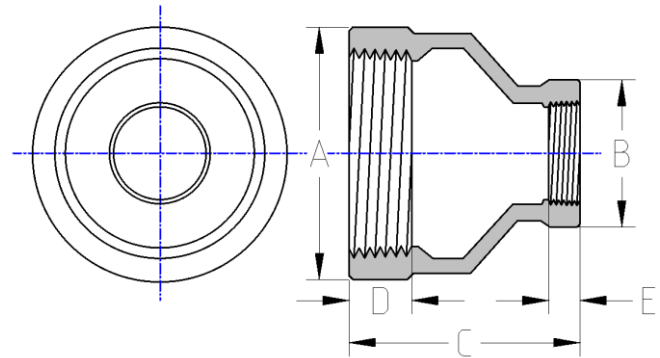


Nominal Pipe Size	Outside Diameter (A)	Outside Diameter (B)	End to End (C)	Internal Thread Length Min. (D)	Internal Thread Length Min. (E)	Nominal Metal Thickness**	Approx. Weight (in Pounds)
1-1/2" X 1/4"	2.441	0.850	2.134	0.70	0.32	0.15	0.67
1-1/2" X 3/8"	2.441	1.024	2.134	0.70	0.36	0.15	0.67
1-1/2" X 1/2"	2.441	1.213	2.134	0.70	0.43	0.15	0.68
1-1/2" X 3/4"	2.441	1.476	2.134	0.70	0.50	0.15	0.71
1-1/2" X 1"	2.441	1.791	2.134	0.70	0.58	0.15	0.76
1-1/2" X 1-1/4"	2.441	2.165	2.134	0.70	0.67	0.15	0.83
2" X 3/8"	2.972	1.024	2.516	0.75	0.36	0.17	1.04
2" X 1/2"	2.972	1.213	2.516	0.75	0.43	0.17	1.04
2" X 3/4"	2.972	1.476	2.516	0.75	0.50	0.17	1.06
2" X 1"	2.972	1.791	2.516	0.75	0.58	0.17	1.15
2" X 1-1/4"	2.972	2.165	2.516	0.75	0.67	0.17	1.24
2" X 1-1/2"	2.972	2.441	2.516	0.75	0.70	0.17	1.27
2-1/2" X 1/2"	3.346	1.213	3.268	0.92	0.43	0.21	1.75
2-1/2" X 3/4"	3.346	1.476	3.268	0.92	0.50	0.21	1.79
2-1/2" X 1"	3.346	1.791	3.268	0.92	0.58	0.21	1.80
2-1/2" X 1-1/4"	3.346	2.165	3.268	0.92	0.67	0.21	1.79
2-1/2" X 1-1/2"	3.346	2.441	3.268	0.92	0.70	0.21	1.83
2-1/2" X 2"	3.346	2.972	3.268	0.92	0.75	0.21	2.17

***The material composition and quality comply with ASTM A351/A351M "Standard Specification for Castings, Austenitic, for Pressure-Containing Parts"**
***NPT Threads on all fittings conform to ASME B1.20.1**
***Dimensions comply with MSS SP-114**
**** Patterns shall be designed to produce castings of metal thickness given in table. Metal thickness at no point shall be less than 90% of the nominal metal thickness value.**



Threaded Reducing Coupling
MSS SP-114 Pattern
150# Cast Stainless Steel
Inches / Pounds



Nominal Pipe Size	Outside Diameter (A)	Outside Diameter (B)	End to End (C)	Internal Thread Length Min. (D)	Internal Thread Length Min. (E)	Nominal Metal Thickness**	Approx. Weight (in Pounds)
3" X 1"	4.134	1.791	3.697	0.98	0.58	0.23	2.59
3" X 1-1/4"	4.134	2.165	3.697	0.98	0.67	0.23	2.59
3" X 1-1/2"	4.134	2.441	3.697	0.98	0.70	0.23	2.61
3" X 2"	4.134	2.972	3.697	0.98	0.75	0.23	2.74
3" X 2-1/2"	4.134	3.346	3.697	0.98	0.92	0.23	2.95
4" X 1-1/4"	5.098	2.165	4.398	1.08	0.67	0.26	3.10
4" X 1-1/2"	5.098	2.441	4.398	1.08	0.70	0.26	3.10
4" X 2"	5.098	2.972	4.398	1.08	0.75	0.26	4.92
4" X 2-1/2"	5.098	3.346	4.398	1.08	0.92	0.26	4.88
4" X 3"	5.098	4.134	4.398	1.08	0.98	0.26	5.06

***The material composition and quality comply with ASTM A351/A351M "Standard Specification for Castings, Austenitic, for Pressure-Containing Parts"**
***NPT Threads on all fittings conform to ASME B1.20.1**
***Dimensions comply with MSS SP-114**
**** Patterns shall be designed to produce castings of metal thickness given in table. Metal thickness at no point shall be less than 90% of the nominal metal thickness value.**