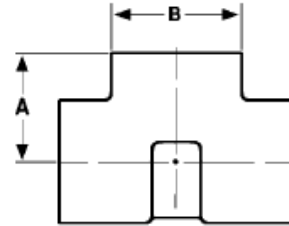




Socket Weld Tee
6000# Forged Steel
Inches / Pounds



Size	A	B	Approximate Weight (in Pounds)
1/2	1.13	1.33	1.12
3/4	1.38	1.62	1.99
1	1.56	1.96	3.24
1 1/4	1.75	2.31	4.27
1 1/2	2.00	2.62	7.65
2	2.24	3.27	8.70

****ASTM SA-105, ANSI B16.11***