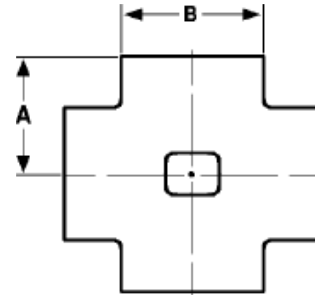




Threaded Cross
2000# Forged Steel
Inches / Pounds



| Size | A | B | Approximate Weight (in Pounds) |
|-------|------|------|--------------------------------|
| 1/8 | 0.81 | 0.88 | 0.54 |
| 1/4 | 0.81 | 0.88 | 0.52 |
| 3/8 | 0.97 | 1.00 | 0.60 |
| 1/2 | 1.12 | 1.31 | 0.84 |
| 3/4 | 1.31 | 1.50 | 1.20 |
| 1 | 1.50 | 1.81 | 1.67 |
| 1 1/4 | 1.75 | 2.19 | 2.48 |
| 1 1/2 | 2.00 | 2.44 | 3.41 |
| 2 | 2.38 | 2.97 | 5.51 |
| 2 1/2 | 3.00 | 3.62 | 16.6 |

****ASTM SA-105, ANSI B16.11***