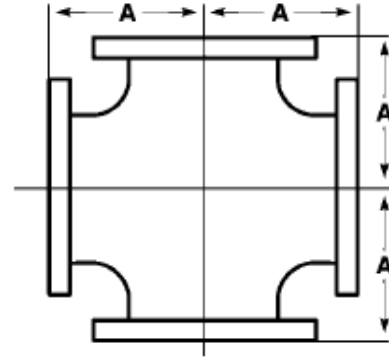




Flanged Cross
125# Cast Iron
150# Ductile Iron
Inches / Pounds



Size	A	Approximate Weight (in Pounds)
2 1/2	5.00	41
3	5.50	48
4	6.50	75
6	8.00	122
8	9.00	197
10	11.00	330
12	12.00	470
14	14.00	530
16	15.00	665
18	16.50	795
20	18.00	1015
24	22.00	1570

****Sizes up to 6" are Ductile Iron, Meet ASTM A395, ANSI/AWWA C110/A21.10, ANSI B16.42***

****Sizes 8" and Larger are Cast Iron, Meet ASTM A126, ANSI/AWWA C110/A21.10, ANSI B16.1***

****All Fittings are Asphalt Coated as Standard, Hot Dip Galvanizing Available***