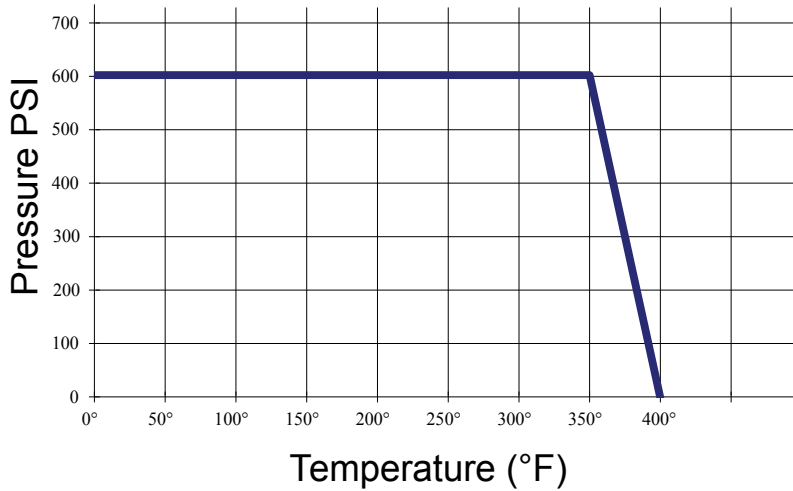
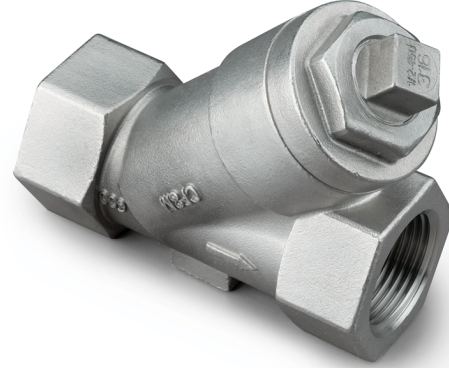


APPLICABLE STANDARDS:

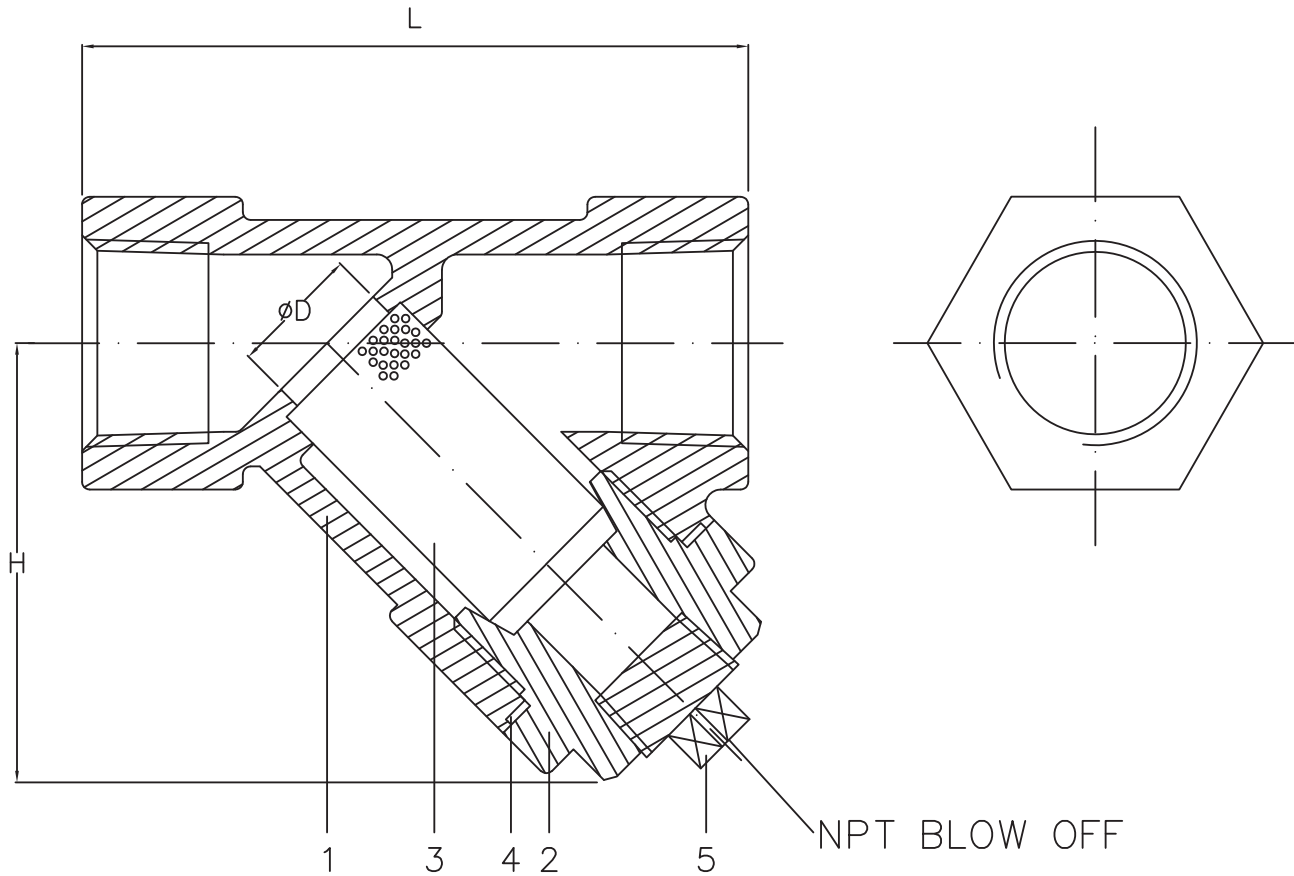
- Design: ASME B16.34
- Testing: API 598
- 600 PSI Working Pressure at 350°F



Cv, Weights & Port

Size	Cv	Wt (Lbs)	Port
3/8"	2.5	0.68	0.35
1/2"	3.5	1.07	0.55
3/4"	5	1.46	0.67
1"	9	2.30	0.87
1-1/4"	16	3.64	1.06
1-1/2"	21	5.09	1.34
2"	40	8.17	1.65
2-1/2"	60	9.99	2.40
3"	75	13.92	2.99

Headquarters:
 One Merit Drive
 PO Box 43127
 Cleveland, OH 44143
 Tel: 216.261.9800
 Toll Free Tel: 800.726.9800
 Toll Free Fax: 855.MBFAXIT(623.2948)
 Email: mbsales@meritbrass.com
 Websites: www.meritbrass.com
www.MBWebXpress.com



NO.	PART NAME	QTY	MATERIAL
1	BODY	1	ASTM A351 CF8M
2	BONNET	2	ASTM A351 CF8M
3	SCREEN	1	SUS316 20 MESH SCREEN STANDARD SUS316 40 AVAILABLE UPON REQUEST
4	GASKET	1	PTFE
5	PLUG	1	ASTM A351 CF8M

Unit: Inch

Size	D Port	L	H	Plug Size
3/8"	0.35	2.64	1.59	1/4"
1/2"	0.55	2.99	1.99	3/8"
3/4"	0.67	3.43	2.21	3/8"
1"	0.87	4.06	2.73	1/2"
1-1/4"	1.06	4.72	3.13	1/2"
1-1/2"	1.34	5.31	3.65	3/4"
2"	1.65	6.30	4.24	3/4"
2-1/2"	2.40	7.87	5.28	1-1/4"
3"	2.99	8.86	5.72	1-1/4"