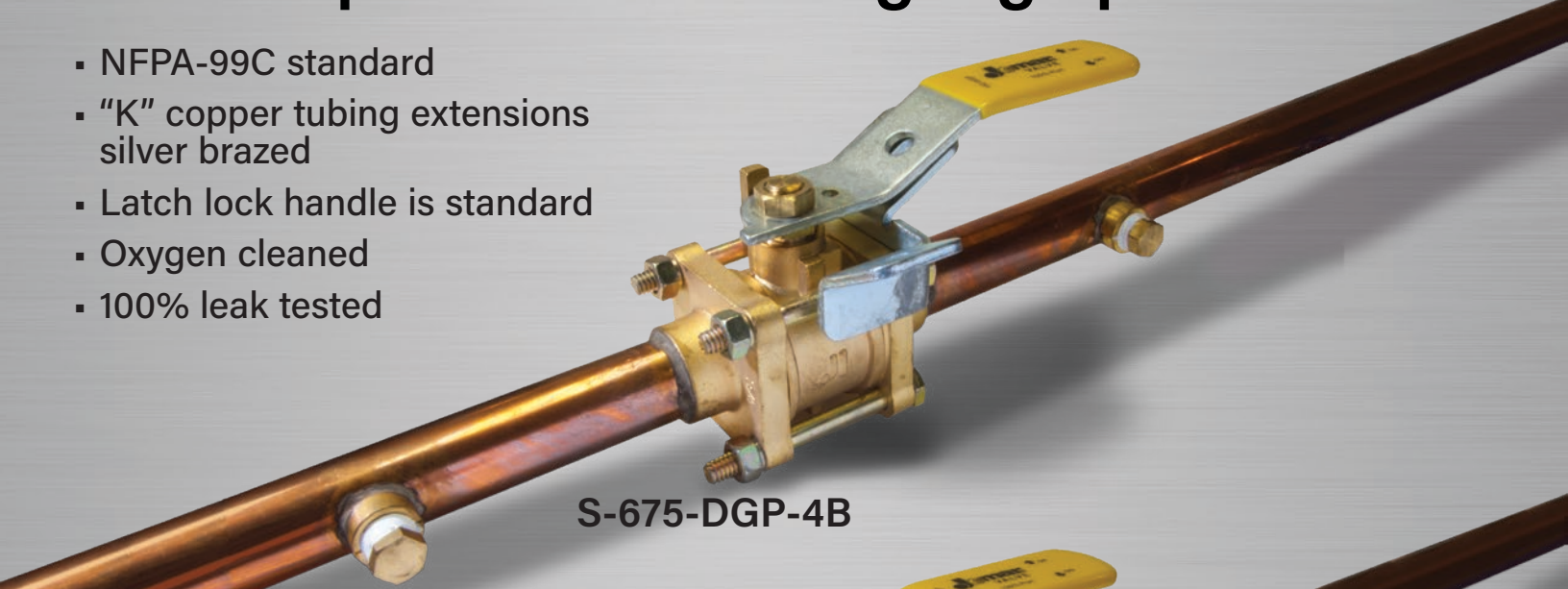


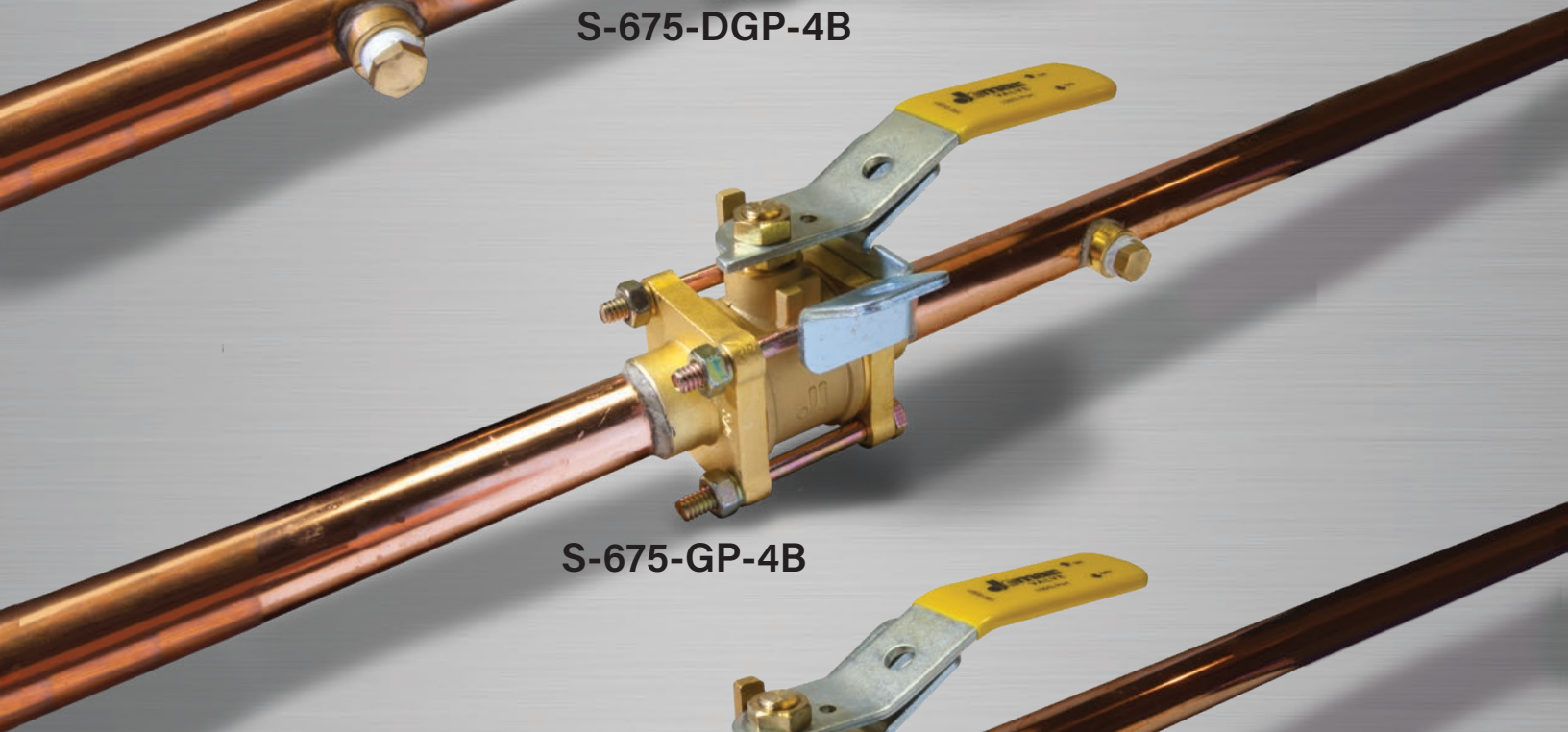
Medical Gas Ball Valves

Available with no gauge port, single gauge port and double gauge port

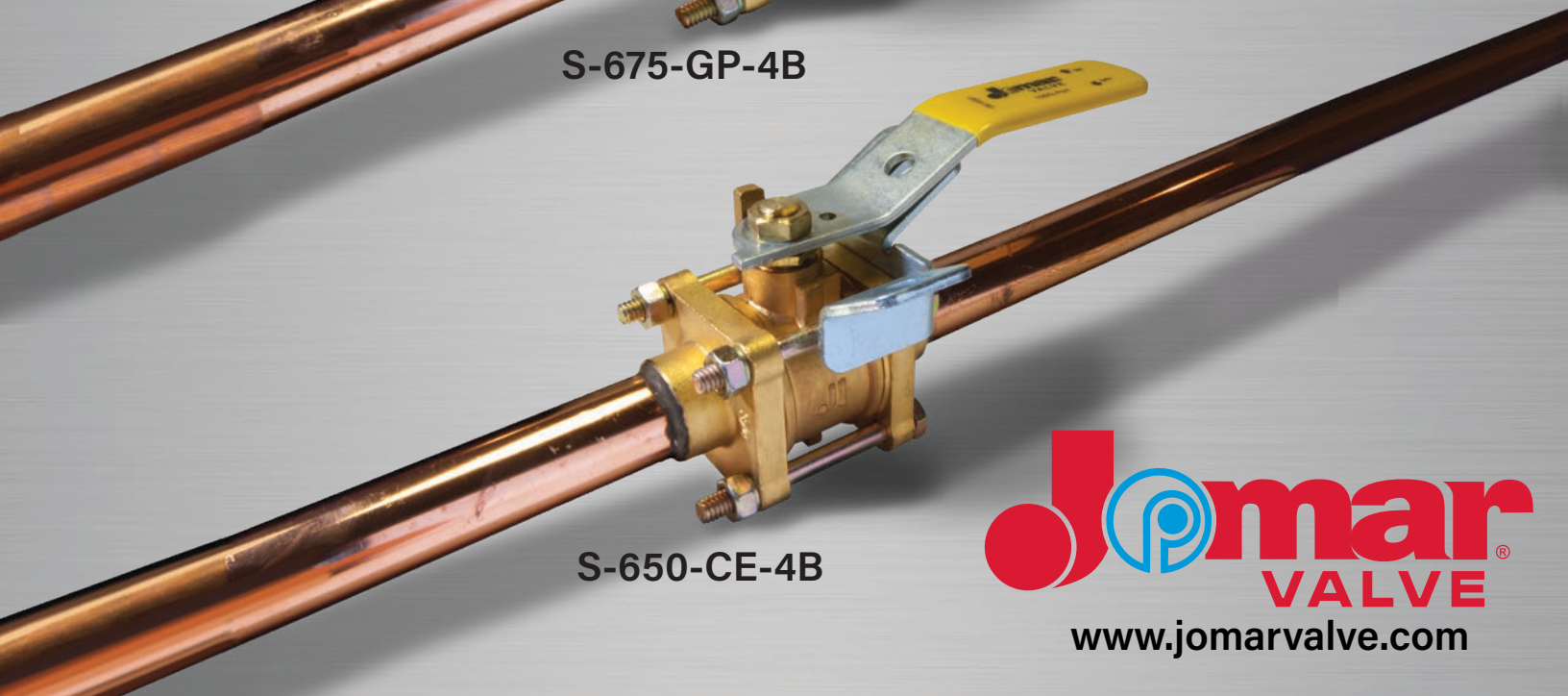
- NFPA-99C standard
- "K" copper tubing extensions silver brazed
- Latch lock handle is standard
- Oxygen cleaned
- 100% leak tested



S-675-DGP-4B



S-675-GP-4B



S-650-CE-4B

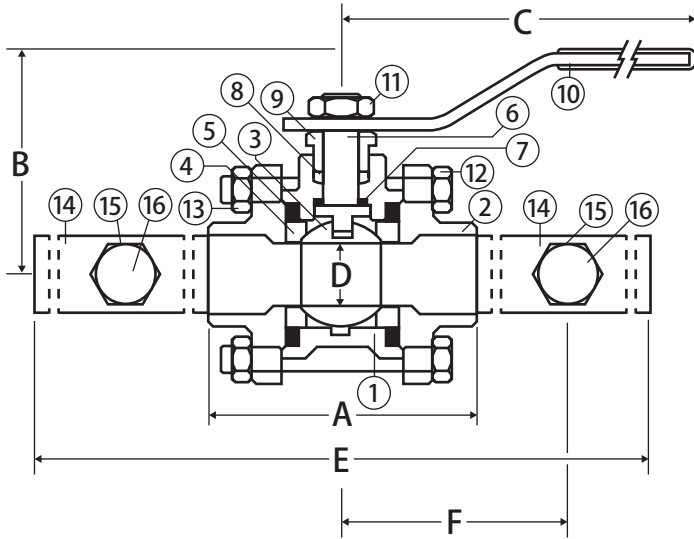


www.jomarvalve.com

Medical Gas Ball Valve



**3 Piece 4 Bolt • Oxygen Cleaned for Medical Gas •
Copper Stub Connection • 600 WOG • available with Gauge Ports**



S-675-DGP-4B (shown)

Features

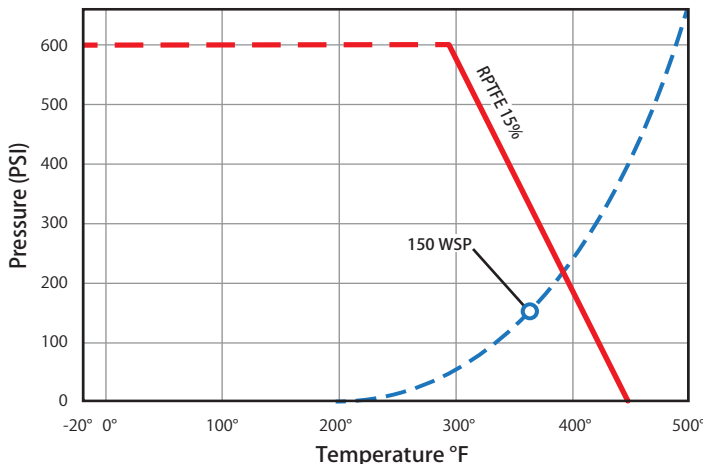
- NFPA-99C standard
- Two 1/8" gauge purge ports
- "K" copper tubing extensions silver brazed
- Latch lock handle is standard
- Oxygen cleaned
- 100% leak tested
- S-675-GP-4B features one 1/8" gauge purge port
- S-675-DGP-4B features two 1/8" gauge purge ports

Approvals

- MSS SP-110

Valve Seat Rating

600 WOG - 150 WSP



Material Specifications

No.	Part	Materials
1	Body	Brass
2	End Cap (2)	Brass
3	Ball	Chrome Plated Brass
4	Seat (2)	RPTFE - 15%
5	Body O-ring (2)	Viton®
6	Stem	Brass
7	Stem Seal	RPTFE - 15%
8	Packing	RPTFE - 15%
9	Packing Gland	Brass
10	Handle	Steel - Nickel Plated
11	Handle Nut	Steel - Nickel Plated
12	Body Bolt (4)	Steel - Nickel Plated
13	Body Nut (4)	Steel - Nickel Plated
14	Extension (2)	Copper
15	Port Housing (2)	Brass
16	Purge Port (2)	Brass
17	Locking Device*	Steel - Nickel Plated

* Not shown in drawing

Part No.	Size	Dimensions					
		A	B	C	D	E	F
S-650-CE-4B							
500-803	1/2"	2.64	1.81	2.87	0.59	17.50	-
500-804	3/4"	2.95	2.44	4.67	0.79	17.50	-
500-805	1"	3.46	2.56	4.67	0.99	19.00	-
500-806	1-1/4"	3.97	3.11	5.86	1.26	20.00	-
500-807	1-1/2"	4.45	3.27	5.86	1.50	23.50	-
500-808	2"	5.55	3.66	7.87	1.97	26.00	-
S-675-GP-4B							
500-823	1/2"	2.64	1.81	2.87	0.59	17.50	5.00
500-824	3/4"	2.95	2.44	4.67	0.79	17.50	5.00
S-675-DGP-4B							
500-833	1/2"	2.64	1.81	2.87	0.59	17.50	5.00
500-834	3/4"	2.95	2.44	4.67	0.79	17.50	5.00
500-835	1"	3.46	2.56	4.67	0.99	19.00	5.00
500-836	1-1/4"	3.97	3.11	5.86	1.26	20.00	6.50
500-837	1-1/2"	4.45	3.27	5.86	1.50	23.50	6.50
500-838	2"	5.55	3.66	7.87	1.97	26.00	6.50