

45°
BENDS

MOLDED
FOR YOUR
INDUSTRY

IntegriFuse™



 **INTEGRITY**
Fusion Products, Inc.

TOLL FREE 1-888-770-6330

INTEGRITYFUSION.COM

45° BENDS

The difference MOLDED Makes

Molded 45 elbows from Integrity Fusion Products offer performance, availability, and value that eliminate the need for fabricated fittings.

The molded difference includes:

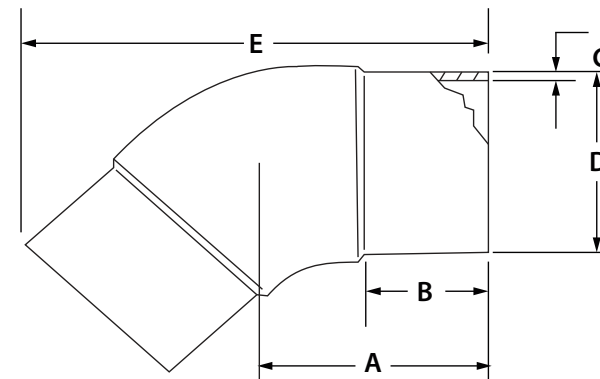
- No inner fusion beads
- Fully Pressure Rated
- Wall thickness remains consistent throughout

IntegriFuse fittings are manufactured from 100% Virgin Resin with black high density bimodal polyethylene copolymer designed for use in, but not limited to, potable water, natural gas, industrial, landfill, oil & gas, and mining applications.

IntegriFuse fittings meet ASTM-D2513(& ASTM-D3261 requirements (where applicable).

Butt fusion, electrofusion, and transition fittings meet AWWA C-901/C-906, NSF/ANSI/CAN 61 and NSF/ANSI 372(where applicable). IntegriFuse fittings are manufactured with resin having a material designation code of PE 3408, PE3608, PE 4710, and PE 100. FM Approved.

Integrity Fusion Products, Inc.
270 Parkade Court
Peachtree City, GA 30269
Phone 770.632.7530 | Fax 770.632.7540
www.IntegrityFusion.com
Call Toll Free at 888.770.6330



IPS

SDR 17 (Standard Dimension Ratio) 125 PSI (Working Pressure at 73.4° F)

Nominal Size	A	B	C	D	E	Weight	Item Code
2" IPS	3.23"	2.64"	0.140"	2.375"	6.38"	0.3 lbs.	100002
3" IPS	4.72"	3.86"	0.206"	3.500"	9.33"	0.9 lbs.	100006
4" IPS	5.31"	4.21"	0.265"	4.500"	10.63"	1.7 lbs.	100010
6" IPS	6.89"	5.35"	0.390"	6.625"	14.09"	4.4 lbs.	100014
8" IPS	8.46"	6.54"	0.507"	8.625"	17.48"	9.8 lbs.	100018
10" IPS	10.04"	7.64"	0.632"	10.750"	20.94"	14.9 lbs.	100022
12" IPS	10.63"	7.80"	0.750"	12.750"	22.64"	22.1 lbs.	100024

SDR 11 (Standard Dimension Ratio) 200 PSI (Working Pressure at 73.4° F)

Nominal Size	A	B	C	D	E	Weight	Item Code	Notes
2" IPS	3.23"	2.64"	0.216"	2.375"	6.38"	0.4 lbs.	100001	FM 200
3" IPS	4.72"	3.86"	0.318"	3.500"	9.33"	1.2 lbs.	100005	FM 200
4" IPS	5.31"	4.21"	0.409"	4.500"	10.63"	2.1 lbs.	100009	FM 200
6" IPS	6.89"	5.35"	0.602"	6.625"	14.09"	6.1 lbs.	100013	FM 200
8" IPS	8.46"	6.54"	0.784"	8.625"	17.48"	12.6 lbs.	100017	FM 200
10" IPS	10.04"	7.64"	0.977"	10.750"	20.94"	21.3 lbs.	100021	FM 200
12" IPS	10.63"	7.80"	1.159"	12.750"	22.64"	31.4 lbs.	100023	FM 200

45° BENDS

The difference MOLDED Makes

Molded 45 elbows from Integrity Fusion Products offer performance, availability, and value that eliminate the need for fabricated fittings.

The molded difference includes:

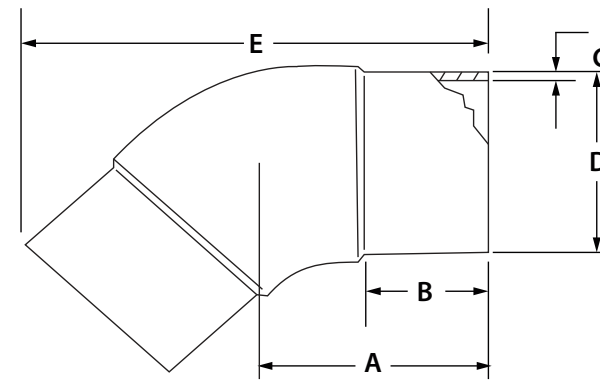
- No inner fusion beads
- Fully Pressure Rated
- Wall thickness remains consistent throughout

IntegriFuse fittings are manufactured from 100% Virgin Resin with black high density bimodal polyethylene copolymer designed for use in, but not limited to, potable water, natural gas, industrial, landfill, oil & gas, and mining applications.

IntegriFuse fittings meet ASTM-D2513 & ASTM-D3261 requirements (where applicable).

Butt fusion, electrofusion, and transition fittings meet AWWA C-901/C-906, NSF/ANSI/CAN 61 and NSF/ANSI 372 (where applicable). IntegriFuse fittings are manufactured with resin having a material designation code of PE 3408, PE3608, PE 4710, and PE 100. FM Approved.

Integrity Fusion Products, Inc.
270 Parkade Court
Peachtree City, GA 30269
Phone 770.632.7530 | Fax 770.632.7540
www.IntegrityFusion.com
Call Toll Free at 888.770.6330



IPS

SDR 9 (Standard Dimension Ratio) 255 PSI (Working Pressure at 73.4° F)

Nominal Size	A	B	C	D	E	Weight	Item Code	Notes
2" IPS	3.23"	2.64"	0.264"	2.375"	6.38"	0.4 lbs.	100004	FM 250
3" IPS	4.72"	3.86"	0.389"	3.500"	9.33"	1.4 lbs.	100008	FM 250
4" IPS	5.31"	4.21"	0.500"	4.500"	10.63"	2.6 lbs.	100012	FM 250
6" IPS	6.89"	5.35"	0.736"	6.625"	14.09"	7.2 lbs.	100016	FM 250
8" IPS	8.46"	6.54"	0.958"	8.625"	17.48"	14.6 lbs.	100020	FM 250

SDR 7 (Standard Dimension Ratio) 335 PSI (Working Pressure at 73.4° F)

Nominal Size	A	B	C	D	E	Weight	Item Code	Notes
2" IPS	3.23"	2.64"	0.339"	2.375"	6.38"	0.5 lbs.	100003	FM 335
3" IPS	4.72"	3.86"	0.500"	3.500"	9.33"	1.7 lbs.	100007	FM 335
4" IPS	5.31"	4.21"	0.643"	4.500"	10.63"	3.2 lbs.	100011	FM 335
6" IPS	6.89"	5.35"	0.946"	6.625"	14.09"	8.7 lbs.	100015	FM 335
8" IPS	8.46"	6.54"	1.232"	8.625"	17.48"	17.9 lbs.	100019	FM 335

DIPS

SDR 11 (Standard Dimension Ratio) 200 PSI (Working Pressure at 73.4° F)

Nominal Size	A	B	C	D	E	Weight	Item Code	Notes
4" DIPS	6.05"	4.10"	0.436"	4.800"	12.00"	3.2 lbs.	100025	FM 200
6" DIPS	7.16"	5.10"	0.627"	6.900"	14.56"	7.94 lbs.	100026	FM 200
8" DIPS	8.32"	5.20"	0.823"	9.050"	17.56"	17.4 lbs.	100027	FM 200
10" DIPS	11.58"	5.20"	0.823"	9.050"	16.33"	19.8 lbs.	100128	FM 200
12" DIPS	11.58"	5.20"	0.823"	9.050"	16.33"	19.8 lbs.	100129	FM 200