

Quick Release Couplings - Series-Q

Applications

- Designed for applications requiring a quick connection and/or disconnection of a pipe joint

Features

- A locking pin through the handle prevents accidental opening of the coupling
- See page 977 for replacement gaskets

Materials

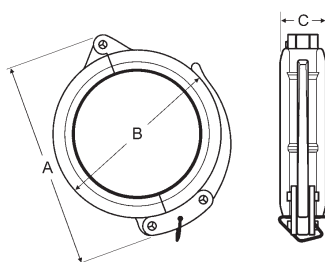
- Ductile iron body with zinc plating and steel safety clip

Comparable to

- Victaulic's #78
- Grinnell's #7003



Nominal Size	Pipe O.D.	Maximum Working Pressure PSI at 70°F (21°C)	Maximum End Load (Lbs.)	Ductile Iron	
				Part # with EPDM gasket	Part # with Nitrile Rubber gasket
1-1/2"	1.900"	300	850	H315	H315BU
2"	2.375"	300	1329	H32	H32BU
2-1/2"	2.875"	300	2120	H325	H325BU
3"	3.500"	300	2886	H33	H33BU
4"	4.500"	300	4771	H34	H34BU
6"	6.625"	300	10341	H36	H36BU



Dimensions

A	B	C
4-3/4"	3-1/2"	1"
5-1/2"	3-3/4"	1-7/8"
5-7/8"	4-3/4"	1-7/8"
7-1/4"	5-1/4"	1-7/8"
8-1/2"	6-1/2"	2"
10-5/8"	8-1/2"	2"