



*Chicago Fittings*

**Wholesale**

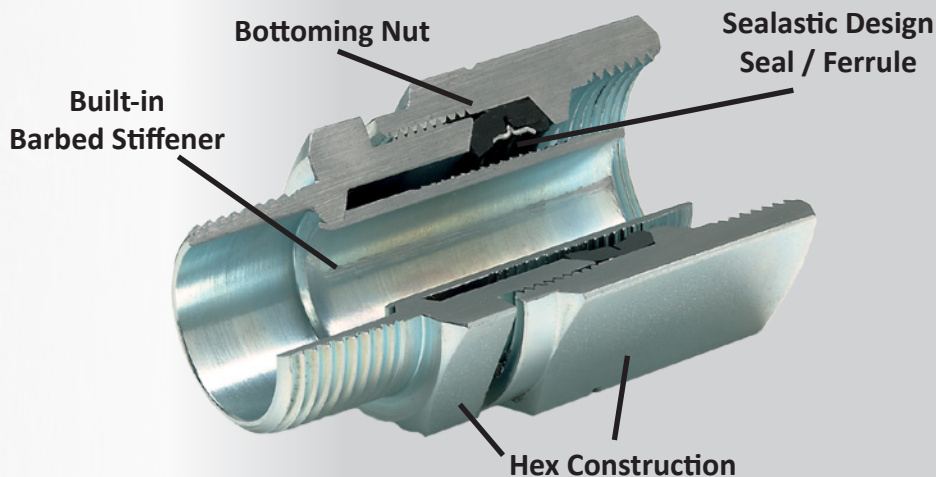
**Products**



[www.chicagofittings.com](http://www.chicagofittings.com)

# Rugged Construction

# Ensures Lasting Field Performance



## Features

- Sealastic Design
- Bottoming Nut (Positive Stop)
- Bi-Directional Seal/Ferrule Assembly
- Solid Bar Stock Construction
- Ease of Assembly
- Tube Preparation

## Benefits

- Rugged Leak Resistant Design utilizing a molded rubber seal/ferrule assembly and integral stiffener
- Self-Seating Design eliminates the need for torque measurement
- One Piece Design eliminates worries of "Order & Orientation" of multiple internal components
- CNC Machined from solid bar stock eliminates concerns associated with malleable castings
- Hex Construction Allows for use of flat jawed wrenches and greatly reduces damage to finishes compared to that of bite-style wrenches
- A Clean, Burr-Free Cut is all that's required (No Chamfering Tools or Fusion Equipment)



**Note:** Sealastic products are manufactured under U.S. and foreign patents.

**Note:** Fittings may be reused only if new seal and ferrule is inserted.



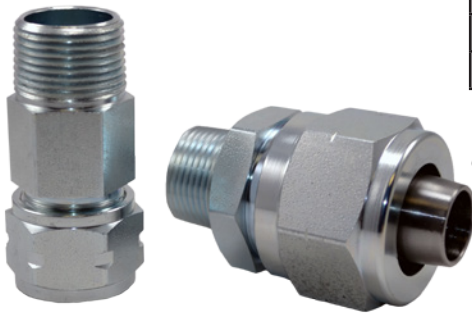
**Note:** When pipe movement out of the coupling might occur as a result of forces other than that caused by internal line pressure of 125 psi maximum, proper anchorage of the pipe must be provided.



The information presented herein and other information from Chicago Fittings and its authorized distributors including but not limited to the description of the goods is for the sole purpose of identifying the goods for further investigation by the users having technical expertise and shall not be deemed to create an express warranty that the goods shall conform to any such description and any information provided shall not be deemed to be part of the basis of bargain of sale of such merchandise. Because every application of the goods is unique, Chicago Fittings makes no and DISCLAIMS ANY WARRANTY THAT THE GOODS ARE MERCHANTABLE OR SUITABLE FOR ANY PARTICULAR PURPOSE REQUIRED BY THE BUYER. It is important that you analyze all aspects of your application and review the information concerning the products or system in the current product literature. Due to the variety of operating conditions and applications for these goods or systems, the user, through its own analysis and testing, is solely responsible for selecting the goods and assuring that all performance, safety and warning requirements of the application are met.

# Plastic Service Fittings

## 597 Series



### Male Adapters - MPT to Plastic, with Integral Stiffener (Steel)

Part #	Outlet	Tube Size	Wall	SDR
M597C1S090	1/2" MPT	1/2" CTS	0.090"	7
M597C2S090	3/4" MPT	1/2" CTS	0.090"	7
M597C11S090	1/2" MPT	1/2" IPS	0.090"	9.3
M597C12S090	3/4" MPT	1/2" IPS	0.090"	9.3
M597C32S095	3/4" MPT	3/4" IPS	0.095"	11
M597C53S119	1" MPT	1" IPS	0.119"	11
M597C74S151	1-1/4" MPT	1 1/4" IPS	0.151"	11
M597C74S166	1-1/4" MPT	1 1/4" IPS	0.166"	10
M597C82S173	1-1/2" MPT	1 1/2" IPS	0.173"	11
M597C96S216	2" MPT	2" IPS	0.216"	11

\*For fittings coated with E-coat Grey add "EG" to the end of the part number.

⚠ For underground use, uncoated fittings must be protected with an approved tape/wrap as defined by local/regional code.

## 750PP Series



### Couplings - Plastic to Plastic, with Integral Stiffeners (Steel)

Part #	Tube Size	Wall	SDR
M750C10	1/2" CTS	0.090"	7
M750C13	1/2" IPS	0.090"	9.3
M750C17	3/4" IPS	0.095"	11
M750C21	1" IPS	0.119"	11
M750C27	1 1/4" IPS	0.151"	11
M750C27-166	1 1/4" IPS	0.166"	10
M750C31	1 1/2" IPS	0.173"	11
M750C38	2" IPS	0.216"	11

\*For fittings coated with E-coat Grey add "EG" to the end of the part number.

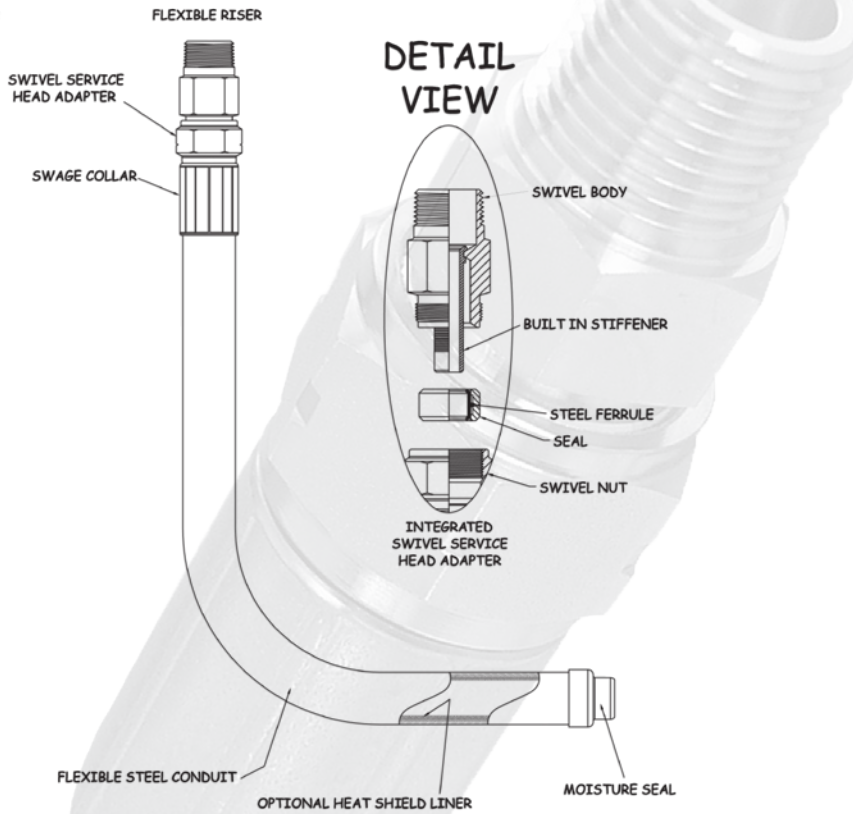
⚠ For underground use, uncoated fittings must be protected with an approved tape/wrap as defined by local/regional code.

# A Series of Flexible Anodeless Risers for the After-the-Meter Market

# X-Riser



# X-Riser®



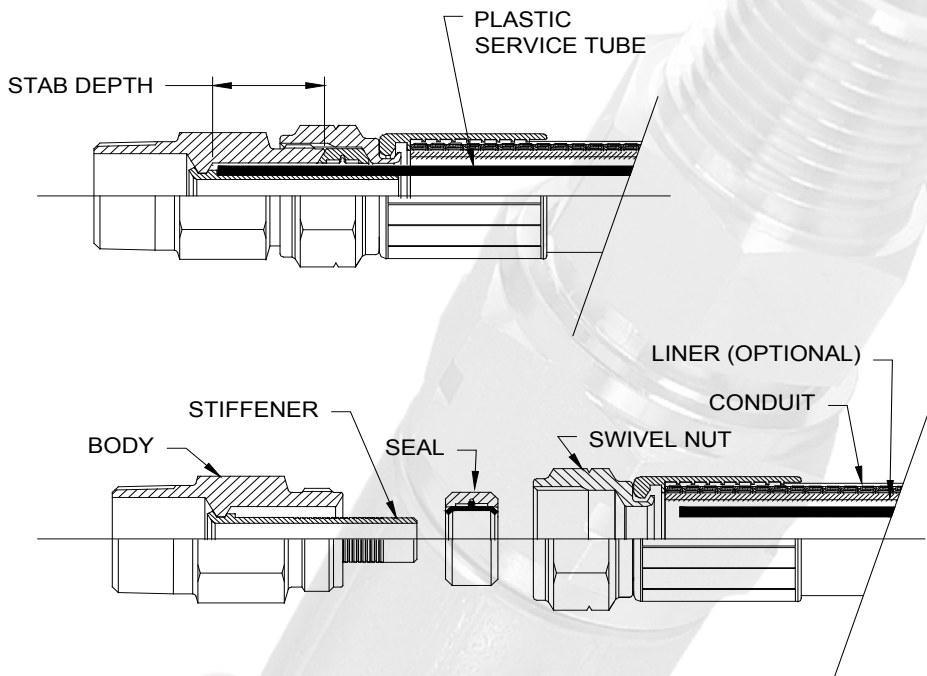
## Features & Benefits

- **NO UNDERGROUND JOINTS** - One solid service line from point-to-point with above ground terminations.
- **NO CHAMFERING** - A simple clean cut is all that is required.
- **BI-DIRECTIONAL SEAL** assembly CAN'T be installed improperly where some competitors multiple internal components MUST have proper order and orientation to function properly.
- **NO TORQUE REQUIREMENTS** - All X-Risers incorporate the "bottoming" or "positive stop" design. Simply tighten the compression nut until it is metal-to-metal and you are done.
- **SIMPLE DESIGN** can be installed with one flat jaw wrench extending the life of protective coatings commonly flawed or removed by pipe wrenches.
- **INTEGRAL BARBED STIFFENERS** are permanent (not loose) for additional pull out resistance.
- **QUALITY** - Chicago Fittings products are CNC machined from solid bar stock (not castings) providing high quality product with the most precise threads and design flexibility.

### Flexible Anodeless Risers for Natural Gas Applications

Part #	Outlet	Tube Size	Wall	SDR	Conduit Length (in.)
XR-10B-8-36-ZDC	1/2" MPT	1/2" CTS	.090"	7	36"
XR-10B-12-36-ZDC	3/4" MPT	1/2" CTS	.090"	7	36"
XR-13B-8-36-ZDC	1/2" MPT	1/2" IPS	.090"	7	36"
XR-18B-12-36-ZDC	3/4" MPT	1" CTS	.090"	12.5	36"
XR-18B-16-36-ZDC	1" MPT	1" CTS	.090"	12.5	36"
XR-18E-12-36-ZDC	3/4" MPT	1" CTS	.100"	11.3	36"
XR-18E-16-36-ZDC	1" MPT	1" CTS	.100"	11.3	36"
XR-17C-12-36-ZDC	3/4" MPT	3/4" IPS	.095"	11	36
XR-21J-16-36-ZDC	1" MPT	1" IPS	.119"	11	36
XR-27G-20-36-ZDC	1 1/4" MPT	1 1/4" IPS	.151"	11	36
XR-27H-20-36-ZDC	1 1/4" MPT	1 1/4" IPS	.166"	10	36
XR-31K-24-36-ZDC	1 1/2" MPT	1 1/2" IPS	.173"	11	36
XR-38M-32-36-ZDC	2" MPT	2" IPS	.216"	11	36

# Installation Procedure



STAB DEPTH/STIFFENER CHART

TUBE SIZE	STAB DEPTH	WALL	COLOR
1/2" CTS	1"	0.062" 0.090"	GOLD STEEL
3/4" CTS	1"	0.080" 0.090"	GOLD STEEL
1" CTS	1"	0.090" 0.100"	STEEL GOLD
1 1/4" CTS	1"	0.090" 0.121"	STEEL BLACK
1/2" IPS	1"	0.090"	STEEL
3/4" IPS	1"	0.095"	STEEL
1" IPS	3/4"	0.119"	STEEL
1 1/4" IPS	1 1/4"	0.151" 0.166"	STEEL BLACK
1 1/2" IPS	1 1/4"	0.173"	STEEL
2" IPS	1 1/4"	0.216"	STEEL

NOTE: .100" IS USED FOR .098"--.102" WALL THICKNESSES

## X-Riser® Installation Procedures

### *For Outdoor Use, (Working Pressure = 125psig)*

1. Remove body and install body into meter valve, regulator or piping system **First**.
2. Insert plastic service tube thru the riser assembly and extend the plastic a minimum of 5" past the end of swivel nut.
3. Cut the plastic tubing square and deburr O.D. and I.D. Clean exposed tubing with a clean, dry, grease free cloth making sure not to scratch the surface of the plastic tubing.
4. Mark tubing to stab depth (SEE CHART) with felt tip pen or suitable marker. Make sure not to scratch surface of plastic tubing with marker.
5. Slip seal over plastic service tube and slide seal into the swivel nut.
6. Stab plastic up into body until end of body is flush to within a 1/8" of the mark.
7. Push swivel nut towards body threads and engage threads. Tighten swivel nut and body until fitting becomes iron bound, that is, "metal to metal".

⚠ FOR **OUTDOOR** USE ONLY!!

⚠ Penetrations through concrete slabs must be sleeved.

# Chicago Fittings X-Riser<sup>®</sup>

## Backyard Products



### Solid Plastic Service From Point to Point

**Total Joints = 4**  
(Zero Below Grade)

**Total Joints = 14**  
(4 Below Grade)

### Features & Benefits

- **NO UNDERGROUND JOINTS** - One solid service line from point-to-point with above ground terminations.
- **NO CHAMFERING** - A simple clean cut is all that is required.
- **BI-DIRECTIONAL SEAL** assembly CAN'T be installed improperly where some competitors multiple internal components MUST have proper order and orientation to function properly.
- **NO TORQUE REQUIREMENTS** - All X-Risers incorporate the "bottoming" or "positive stop" design. Simply tighten the compression nut until it is metal-to-metal and you are done.
- **SIMPLE DESIGN** can be installed with one flat jaw wrench extending the life of protective coatings commonly flawed or removed by pipe wrenches.
- **INTEGRAL BARBED STIFFENERS** are permanent (not loose) for additional pull out resistance.
- **QUALITY** - Chicago Fittings products are CNC machined from solid bar stock (not castings) providing high quality product with the most precise threads and design flexibility.



# Certifications

## SEALASTIC™ NATURAL GAS/PROPANE FITTINGS

### SECTION 1 - Integral Stiffener Design

Chicago Fittings Corporation Certifies that all Sealastic™ Gas Fittings manufactured with integral stiffeners, when installed per Chicago Fittings installation instructions, will meet all applicable requirements defined under 49CFR Part 192, D.O.T. 192.281, 192.283(b), 192.375, ASTM D2513 Category 1, ASTM F1973, ASTM F1948-12 Category 1, NFPA 58, NFPA 54 (ANSI Z223.1) and IFGC Section 403. IAPMO/UPC/IPC Listed.

### SECTION 2 - Loose Stiffener Design

Chicago Fittings Corporation Certifies that all Sealastic™ Gas Fittings manufactured with loose stiffeners, when installed per Chicago Fittings installation instructions, will meet all applicable requirements defined under 49CFR Part 192, D.O.T. 192.281, 192.283(b), 192.375, ASTM D2513 Category 1, ASTM F1973, ASTM F1948-12 Category 1, NFPA 58, NFPA 54 (ANSI Z223.1) and IFGC Section 403. IAPMO/UPC/IPC Listed. The loose stiffeners must be manufactured or approved by Chicago Fittings to adhere to these requirements. Should a stiffener not be manufactured or approved by Chicago Fittings, it will be the responsibility of the operating utility or end user to validate that they adhere to the above defined standards.

### SECTION 3 – Material Definitions

3.1 Bodies	3.1.1	Tubing AISI C1013
	3.1.2	Bar AISI C12L14, C1213, C1215
	3.1.3	Bar CDA836 85-5-5-5 Bronze
	3.1.4	Bar CDA360 Free Machining Brass
3.2 Nuts	3.2.1	Tubing AISI C1013
	3.2.2	Bar AISI C12L14, C1213, C1215
	3.2.3	Bar CDA836 85-5-5-5 Bronze
	3.2.4	Bar CDA360 Free Machining Brass
3.3 Seals	3.3.1	Seals shall be manufactured from a Buna-N compound material that will resist deterioration from age or air under normal storage conditions. The seal will resist deterioration from impurities normally found in natural gas or LP gas including odorants, liquid hydrocarbons, carbon dioxide and water. The compound shall meet the following specifications: Color: Black/Red      Durometer: 75 +/-5 Elongation: 150%      Tensile Strength: 1,500 psi min.
3.4 Ferrules	3.4.1	Cold Rolled Strip C1050
3.5 Insulators	3.5.1	Zytel 105
3.6 Conduit	3.6.1	Core Material: Hot Dipped Galvanized Steel
	3.6.2	Jacket Wall: Liquid Tight, Sunlight Resistant
	3.6.3	Crush Resistance: 1,200psi min. in accordance with UL 360
3.7 Casing	3.6.1	Pipe/Tubing ASTM A53, ASTM A513
3.8 Moisture Seals	3.7.1	Hot Dipped Vinyl



**Toll Free: 877.638.9009**

**Fax: 608.299.8901**

