

Building connections that last™



Fire Protection & Waterworks Valves



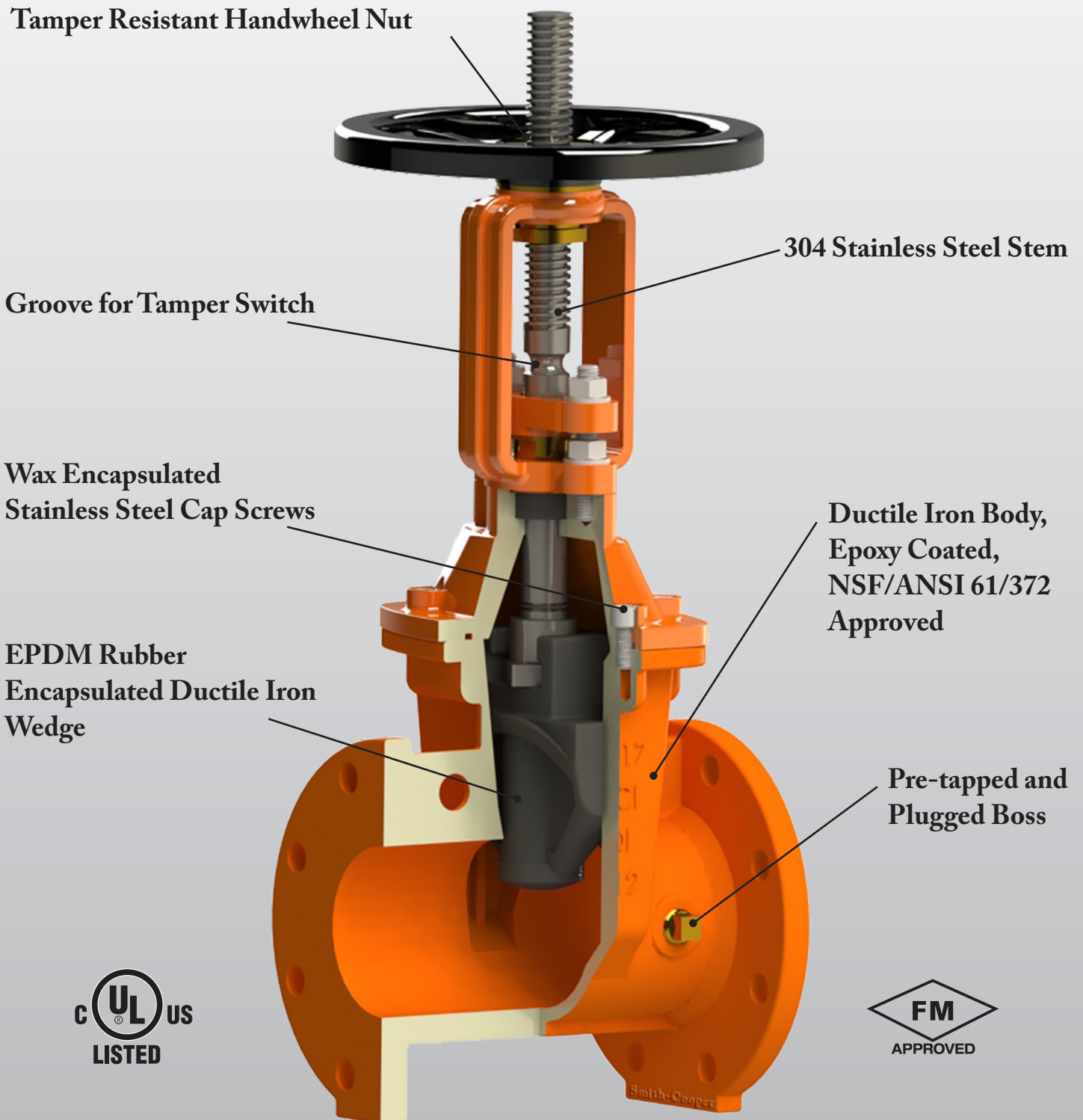
AWWA
C515 Compliant



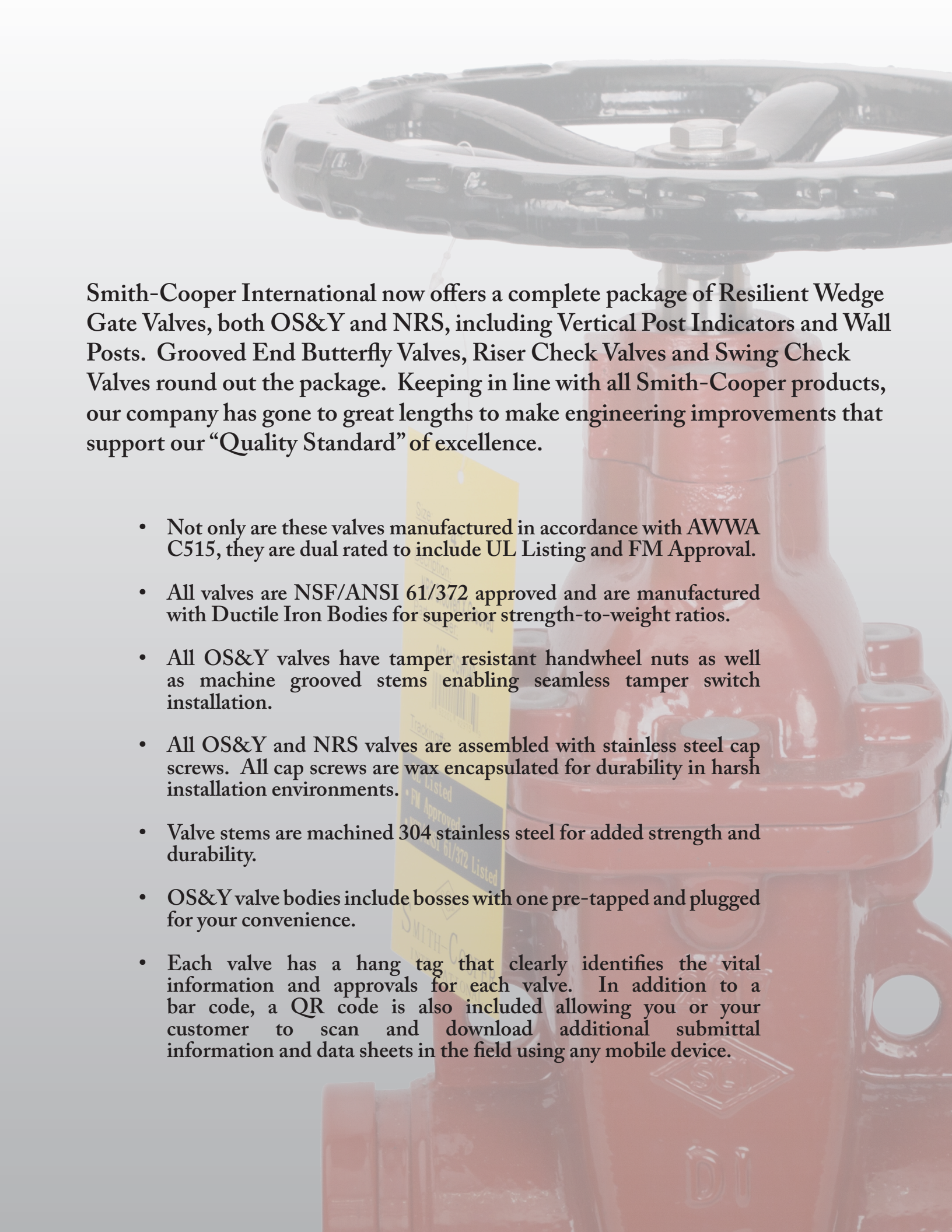
SCI®

An ASC Engineered Solution

CONSIDER Your Options



SMITH-COOPER[®]
I N T E R N A T I O N A L

A large red industrial valve with a black handwheel is the background of the page. A yellow hang tag is attached to the valve, featuring a barcode and text including 'UL Listed', 'FM Approved', and 'NSF 61/372 Listed'.


Smith-Cooper International now offers a complete package of Resilient Wedge Gate Valves, both OS&Y and NRS, including Vertical Post Indicators and Wall Posts. Grooved End Butterfly Valves, Riser Check Valves and Swing Check Valves round out the package. Keeping in line with all Smith-Cooper products, our company has gone to great lengths to make engineering improvements that support our “Quality Standard” of excellence.

- Not only are these valves manufactured in accordance with AWWA C515, they are dual rated to include UL Listing and FM Approval.
- All valves are NSF/ANSI 61/372 approved and are manufactured with Ductile Iron Bodies for superior strength-to-weight ratios.
- All OS&Y valves have tamper resistant handwheel nuts as well as machine grooved stems enabling seamless tamper switch installation.
- All OS&Y and NRS valves are assembled with stainless steel cap screws. All cap screws are wax encapsulated for durability in harsh installation environments.
- Valve stems are machined 304 stainless steel for added strength and durability.
- OS&Y valve bodies include bosses with one pre-tapped and plugged for your convenience.
- Each valve has a hang tag that clearly identifies the vital information and approvals for each valve. In addition to a bar code, a QR code is also included allowing you or your customer to scan and download additional submittal information and data sheets in the field using any mobile device.

Series 017135

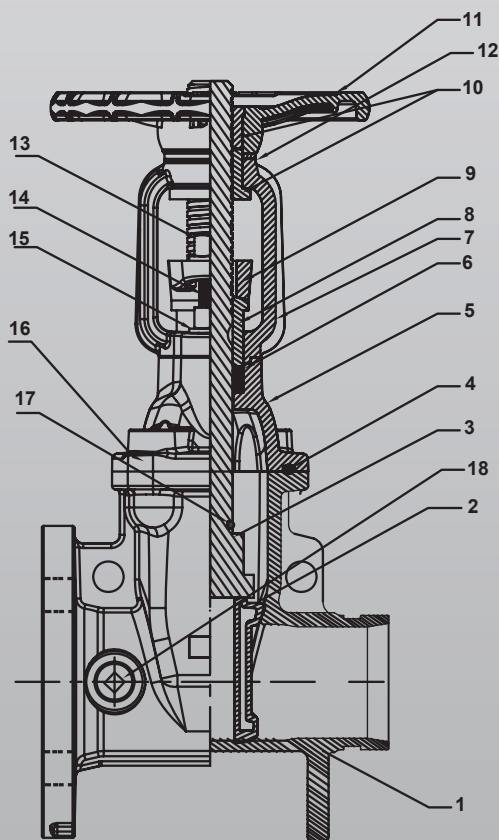
UL/FM AWWA RESILIENT WEDGE OS&Y GATE VALVES



- Sizes 2 ½"-12"
- 300 lb. non-shock cold working pressure
- Ductile iron body and bonnet
- 304 Stainless Steel stem
- Wax encapsulated stainless cap screws
- Fusion bonded epoxy coating AWWA C550
- Meets AWWA C515
- Certified to ANSI/NSF 61 & 372 (Lead Free)
- UL Listed / FM Approved
- Grooved stem for tamper switch
- Pre-tapped and plugged for bypass with additional bosses
-  Brand for full traceability

Available End Connections

- Flange x Flange
- Flange x Groove
- Groove x Groove



No.	Part	Material
1	Body	Ductile Iron Gr. A536 65-45-12
2	Wedge	Ductile Iron Gr. A536 65-45-12; EPDM
3	Stem	304 Stainless Steel
4	Bonnet Gasket	EPDM
5	Bonnet	Ductile Iron Gr. A536 65-45-12
6	Stem Packing	EPDM
7	Yoke	Ductile Iron Gr. A536 65-45-12
8	Packing Gland	Brass ASTM B148 C95400
9	Gland Flange	Ductile Iron A536 65-45-12
10	Yoke Nut	Brass ASTM B148 C95400
11	Handwheel	Ductile Iron Gr. A536 65-45-12
12	Washer	Brass ASTM B148 C95400
13	Gland Nut	304 Stainless Steel
14	Stud	304 Stainless Steel
15	Flat Washer	304 Stainless Steel
16	Bonnet Bolt	304 Stainless Steel
17	O-Ring	EPDM
18	Plug	Lead Free Bronze B584-C89833


Link to Valve
Submittal



Series 017115

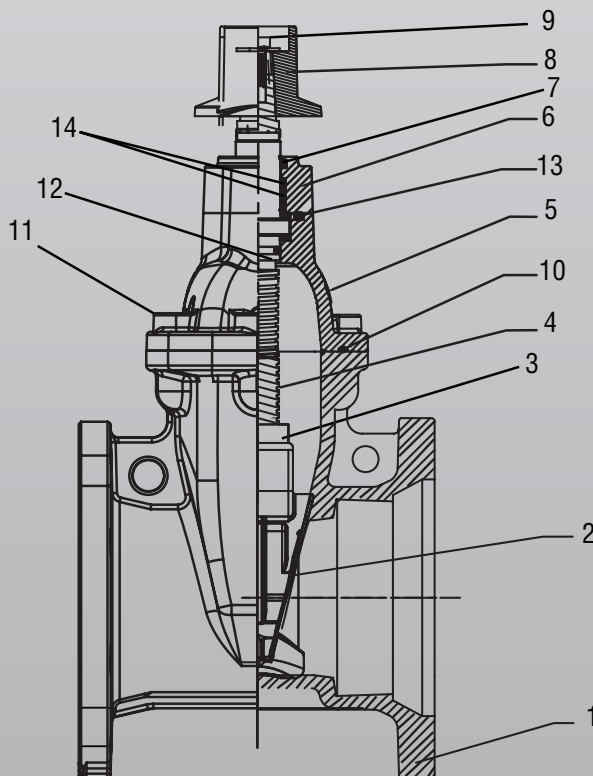
UL/FM AWWA RESILIENT WEDGE NRS GATE VALVES



- Sizes 2"-12"
- 300 lb. non-shock cold working pressure
- Ductile iron body and bonnet
- 304 Stainless Steel non-rising stem
- Wax encapsulated stainless cap screws
- Fusion bonded epoxy coating AWWA C550
- Meets AWWA C515
- Certified to ANSI/NSF 61 & 372 (Lead Free)
- UL Listed / FM Approved
- Available with Op Nut or Handwheel
-  Brand for full traceability

Available End Connections

- Flange x Flange
- Flange x Mechanical Joint
- Mechanical Joint x Mechanical Joint
- Flange x Groove
- Groove x Groove



No.	Part	Material
1	Body	Ductile Iron Gr. A536 65-45-12
2	Wedge	Ductile Iron Gr. A536 65-45-12; EPDM
3	Wedge Nut	ASTM B148 C95400
4	Stem	304 Stainless Steel
5	Bonnet	Ductile Iron Gr. A536 65-45-12
6	Packing Gland / O-Ring	EPDM
7	Stem Wiper	EPDM
8	Operating Nut	Ductile Iron Gr. A536 65-45-12
9	Bolt	Carbon Steel Zinc Plated
10	Bonnet O-Ring	EPDM
11	Bonnet Bolts	Carbon Steel Zinc Plated
12	Gasket / O-Ring	EPDM
13	Packing / Bonnet O-Ring	EPDM
14	Packing / Gland O-Ring	EPDM

Link to Valve
Submittal



www.smithcooper.com/QRNRS

Series 017125

UL/FM AWWA RESILIENT WEDGE GATE VALVE WITH

TOP PLATE



- Sizes 4"-12"
- 300 lb. non-shock cold working pressure
- Ductile iron body and bonnet
- 304 Stainless Steel non-rising stem
- Wax encapsulated stainless cap screws
- Fusion bonded epoxy coating AWWA C550
- Meets AWWA C515
- Certified to ANSI/NSF 61 & 372 (Lead Free)
- UL Listed / FM Approved
- Brand for full traceability

Available End Connections

- Flange x Flange
- Flange x Mechanical Joint
- Mechanical Joint x Mechanical Joint

Link to Valve
Submittal



www.smithcooper.com/QRNRS

Series 017125PI

UL/FM VERTICAL POST INDICATOR

- Adjustable from 36" to 72"
- Ductile iron body and bonnet
- Stainless Steel Op Nut
- Fusion bonded epoxy coating
- UL Listed / FM Approved
- Brand for full traceability



Series 017125WP

UL/FM WALL POST INDICATOR

- Ductile iron body
- Stainless Steel Op Nut
- Fusion bonded epoxy coating
- UL Listed / FM Approved
- Brand for full traceability

Link to Valve
Submittal



www.smithcooper.com/QRPOST

Fig. 67BFVGET UL/FM GROOVED END BUTTERFLY VALVE WITH INDICATOR

- Sizes 2½"-8"
- 300 psi working pressure
- cULus Listed / FM Approved
- California State Fire Marshall Approval No. 7770-2252:0500
- Factory installed replaceable double tamper switch
- Approved for indoor and outdoor use
- Grooved ends
- Gear operated



Fig. 67CVR UL/FM GROOVED RISER CHECK VALVE

- Sizes 2½"-8"
- 300 psi working pressure
- UL Listed / FM Approved
- Designed for use in wet pipe fire sprinkler systems
- Factory NPT tapped and plugged for drain and gauge connections
- For vertical installation only
- EPDM faced disc; bronze seat
- Groove dimensions to AWWA C-606
- Fusion bonded epoxy coated interior & exterior



Fig. 67BFVG GROOVED END BUTTERFLY VALVE

- Sizes 2"-12"
- 300 psi working pressure
- Ductile iron body
- EPDM-200° F maximum working temperature
- NBR-180° F maximum working temperature
- 10-Position lever handle or gear operator
- Grooved ends
- Rubber encapsulated DI Disc

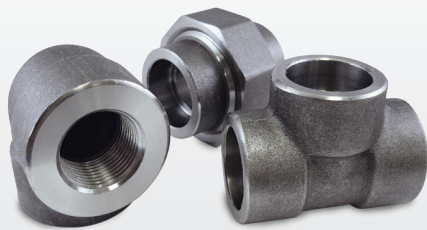


Fig. 67CV GROOVED SWING CHECK VALVE

- Sizes 2"-12"
- 300 psi working pressure
- Designed for use in wet pipe systems
- For vertical* or horizontal installation
- EPDM or NBR coated disc; stainless steel seat
- Groove dimensions to AWWA C-606
- Fusion bonded epoxy coated interior & exterior



**Upward flow only.*



Forged Steel Fittings

2000#, 3000#, 6000# • Thrd & S/W
1/8" - 4"



COOPLOK™ Grooved

COUPLINGS, FITTINGS & VALVES
1" - 24"



Ductile Iron Thread Fittings

UL/FM @ 500 PSI
1/2" - 2-1/2"



Merchant Steel Coupling & Fittings

FULL, HALF, API STYLE • 1/8" - 12"
DROP PIPE COUPLINGS • 1" - 2"



Valves

CARBON, STAINLESS,
BRASS & PVC
1/4" - 4"



Cast Iron Threaded Fittings

UL/FM @ 300 PSI
1/2" - 2-1/2"



Malleable Iron Fittings

150# & 300# • BLK. & GALV.
1/8" - 8"



Bronze & Lead Free Brass Fittings • Flanges • Nipples • Pipe

125# • 1/8" - 6"



COOPLET® Weld Outlets

UL/FM 300 PSI
THREADED 1/2" - 4"
GROOVED 1-1/4" - 6"



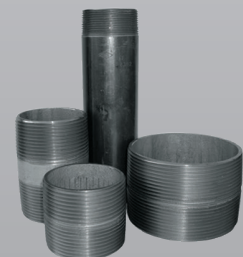
Flanged Fittings and Flanges

125# & 250#
FLANGED FITTINGS 1" - 30"
FLANGES - BLIND, THREADED, REDUCING



AWWA Gate & Butterfly Valves

BUTTERFLY - LUG, WAFER, GROOVED
AWWA - FLANGED GATE & CHECK,
MJ, THREADED, PUSH-ON



Nipples

BLACK & GALVANIZED
WELDED & SEAMLESS
SCH 40, SCH 80 & XXH
COOPLET® ADAPTER NIPPLES



SMITH-COOPER®
INTERNATIONAL



2867 Vail Avenue, Commerce, CA 90040 Tel. (323) 890-4455 Fax (323) 890-4456 www.smithcooper.com

About ASC Engineered Solutions

ASC Engineered Solutions is defined by quality—in its products, services and support. With more than 1,400 employees, the company's portfolio of precision-engineered piping support, valves and connections provides products to more than 4,000 customers across industries, such as mechanical, industrial, fire protection, oil and gas, and commercial and residential construction. Its portfolio of leading brands includes ABZ Valve®, AFCON®, Anvil®, Anvil EPS, Anvil Services, Basic-PSA, Beck®, Catawissa, Cooplet®, FlexHead®, FPPI®, Gruvlok®, J.B. Smith, Merit®, North Alabama Pipe, Quadrant®, SCI®, Sharpe®, SlideLOK®, SPF® and SprinkFLEX®. With headquarters in Commerce, CA, and Exeter, NH, ASC also has ISO 9001:2015 certified production facilities in PA, TN, IL, TX, AL, LA, KS, and RI.



asc-es.com

Building connections that last™

