

## Class 150 (Standard) Fig. 3104 45° Street Elbow



For Listings/Approval Details and Limitations, visit our website at [www.asc-es.com](http://www.asc-es.com) or contact an ASC Engineered Solutions Sales Representative.

**Figure 3104** 45° Street Elbow

Nominal Size	Dimensions		Approx Wt. Each
	A	B	
In. (mm)	In. (mm)	In. (mm)	Lbs. (kg)
1/8	0.63	0.83	0.05
6	16.00	21.08	0.02
1/4	0.73	0.94	0.08
8	18.54	23.88	0.04
3/8	0.80	1.03	0.12
10	20.32	26.16	0.05
1/2	0.88	1.15	0.18
15	22.35	29.21	0.08
3/4	0.98	1.29	0.27
20	24.89	32.77	0.12
1	1.12	1.47	0.44
25	28.45	37.34	0.20
1 1/4	1.29	1.71	0.70
32	32.77	43.43	0.32
1 1/2	1.43	1.88	0.92
40	36.32	47.75	0.42
2	1.68	2.22	1.50
50	42.67	56.39	0.68

### Material Specifications

#### Dimensions:

Fittings: ASME B16.3  
Unions: ASME B16.39  
Bushings/Plugs: ASME B16.14

**Material:** ASTM A-197

**Finish:** Black or Hot Dip Galvanized per ASTM A153 Class A

**Threads\*:** NPT per ASME B1.20.1

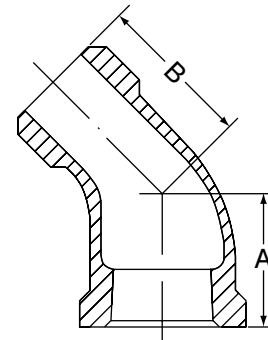
#### Pressure Ratings:

Fittings: ASME B16.3  
Unions: ASME B16.39  
Bushings/Plugs: ASME B16.14

**Pressure Testing:** All malleable iron fittings are tested for through wall porosity using an air under water process.

**Agency Approvals:** All malleable iron fittings and unions are UL/ULC Listed and FM Approved.

\*British Standard threading per BS 21 available upon request.



PROJECT INFORMATION	APPROVAL STAMP
Project:	Approved
Address:	Approved as noted
Contractor:	Not approved
Engineer:	Remarks:
Submittal Date:	
Notes 1:	
Notes 2:	