

Class 150 (Standard) Fig. 3102 45° Elbow



For Listings/Approval Details and Limitations, visit our website at www.asc-es.com or contact an ASC Engineered Solutions™ Sales Representative.

Figure 3102 45° Elbow

Nominal Size	Dimension A	Approx Wt. Each
In. (mm)	In. (mm)	Lbs. (kg)
1/8 6	0.63 16.00	0.06 0.03
1/4 8	0.73 18.54	0.11 0.05
3/8 10	0.80 20.32	0.14 0.06
1/2 15	0.88 22.35	0.20 0.09
3/4 20	0.98 24.89	0.32 0.15
1 25	1.12 28.45	0.50 0.23
1 1/4 32	1.29 32.77	0.76 0.35
1 1/2 40	1.43 36.32	1.00 0.45
2 50	1.68 42.67	1.61 0.73
2 1/2 65	1.95 49.53	2.77 1.26
3 80	2.17 55.12	4.03 1.83
4 100	2.61 66.29	6.92 3.14
6 150	3.46 87.88	16.31 3.40

Material Specifications

Dimensions:

Fittings: ASME B16.3

Unions: ASME B16.39

Bushings/Plugs: ASME B16.14

Material: ASTM A-197

Finish: Black or Hot Dip Galvanized per ASTM A153 Class A

Threads*: NPT per ASME B1.20.1

Pressure Ratings:

Fittings: ASME B16.3

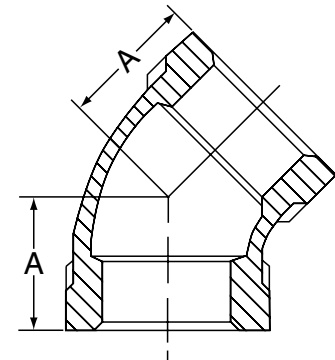
Unions: ASME B16.39

Bushings/Plugs: ASME B16.14

Pressure Testing: All malleable iron fittings are tested for through wall porosity using an air under water process.

Agency Approvals: All malleable iron fittings and unions are UL/ULC Listed and FM Approved.

*British Standard threading per BS 21 available upon request.



PROJECT INFORMATION	APPROVAL STAMP
Project:	Approved
Address:	Approved as noted
Contractor:	Not approved
Engineer:	Remarks:
Submittal Date:	
Notes 1:	
Notes 2:	