

# AF735

## Multi-Size Lateral Sway Brace Attachment

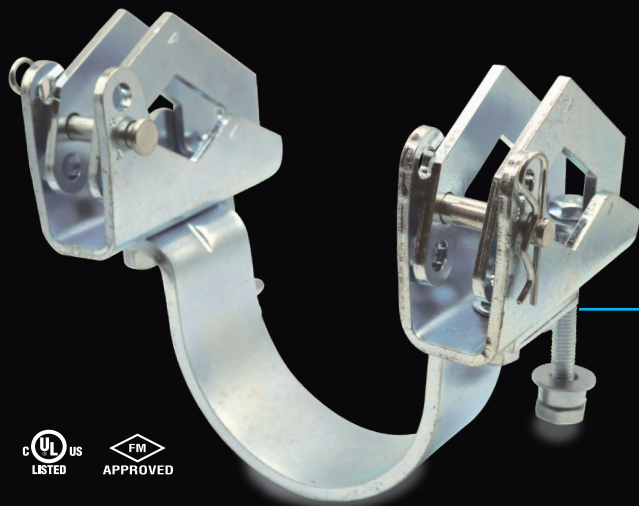


Fig. AF735



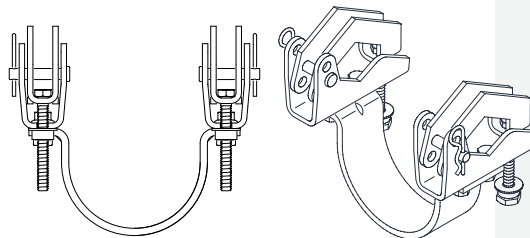
### About the Product

#### Description

ASC Engineered Solutions AFCON® figure AF735 “Bear Trap™” is a multi-size lateral sway brace attachment. It’s a time saving, innovative solution designed to install quickly and easily.

The AF735 is designed to work with 1" through 2" brace pipe. Out of the box, it works with 1" or 1 ¼" brace pipe and with a quick adjustment, it will work with 1 ½" or 2" brace pipe. This size range capability enables a reduction in inventory and increased flexibility on the jobsite for adjustments.

The AF735 is designed to install quickly, in half the time of traditional lateral brace attachments.



This product is both UL Listed and FM Approved and ready for incorporation into your seismic bracing system design. Using [Seis Brace 2.0](#), ASC’s free seismic fire protection calculation software, enables spacing maximization and a reduction in material costs while ensuring NFPA 13 code compliance.

The AF735 can reduce your installation time by up to 50%. [See how.](#)



#### Features & Benefits

- Compatible with 1" – 2" brace pipe
- Allows for less inventory & more jobsite flexibility
- Easy to install
- Installs quickly in half the time of traditional sway brace attachments
- Lowers total install costs
- UL Listed & FM Approved
- High load capacity
- Visual verification of torque & installation
- Complies with NFPA 13, ASCE 7, IBC, & MSS SP-127 bracing requirements.



asc-es.com

Building connections that last™

# Fig. AF735 Multi-Size Lateral Brace Attachment

FIG. AF735: Weight

Weight (lbs.)	Service Pipe Size				
	2 1/2"	3"	4"	6"	8"
	4.0	4.2	5.0	5.8	6.4

FIG. AF735 cULus Listing per ANSI/UL 203a (ASD)

Service Pipe Size	Standard Service Pipe	Specialty Service Pipe	Horizontal Load Rating at Brace Angle			
			30°-44°	45°-59°	60°-90°	Listed
			lbf/kN	lbf/kN	lbf/kN	lbf/kN
2 1/2"		Mega-Flow Eddy Flow Fire-Flow Hydroflow				
3"	Sch. 10 Sch. 40	Mega-Flow Eddy Flow Fire-Flow Hydroflow	942	1333	1632	1885
			4.19	5.93	7.26	8.38
4"		Mega-Flow Eddy Flow Fire-Flow Hydroflow				
6"		Mega-Flow				
8"	0.188" Wall Sch. 30					

- 1) Brace Angles are determined from Vertical.
- 2) Sch. 10 & 0.188" Wall Load Ratings may be used for any thicker wall pipe of the same diameter.
- 3) Listed load ratings reduced for angle ranges in accordance with NFPA 13-2019 Table 18.5.2.3.
- 4) Load Ratings reflect 1" - 2" brace members.
- 5) Minimum safety factor of 2.2 in accordance with NFPA 13-2019 Section A.18.5.2.3.

FIG. AF735 FM Approved (Listing) per FM 1950-13 (ASD)

Service Pipe Size	Standard Service Pipe	Specialty Service Pipe	Horizontal Load Rating at Brace Angle			
			30°-44°	45°-59°	60°-74°	75°-90°
			lbf/kN	lbf/kN	lbf/kN	lbf/kN
2 1/2"		Mega-Flow	1780	2510	3080	3440
		Eddy Flow	7.91	11.16	13.70	15.30
		Fire-Flow				
		Hydroflow				
3"	Sch. 10 Sch. 40	Mega-Flow	1670	2360	2890	3230
		Eddy Flow	7.42	10.49	12.85	14.36
		Fire-Flow				
		Hydroflow				
4"		Mega-Flow	1660	2350	2880	3210
		Eddy Flow	7.38	10.45	12.81	14.27
		Fire-Flow				
		Hydroflow				
6"		Mega-Flow	1400	1990	2440	2720
			6.22	8.85	10.85	12.09
8"	0.188" Wall Sch. 30	-	1050	1490	1830	2040
			4.67	6.62	8.14	9.07

- 1) Brace Angles are determined from Vertical.
- 2) Sch. 10 & 0.188" Wall Load Ratings may be used for any thicker wall pipe of the same diameter.
- 3) See table below for FM listed specialty pipes & FM Listed metric service pipes.
- 4) Load Ratings reflect 1" - 2" brace members. See table below for listed brace members.
- 5) Load ratings include a minimum safety factor of 1.5 in accordance with NFPA 13-2016 Section A.9.3.5.2.3. To convert the load ratings above to a safety factor of 2.2 per NFPA 13-2019 Section A.18.5.2.3, multiply load ratings by a factor of 0.68.
- 6) To convert to LRFD Load Ratings, ASD Load Ratings may be multiplied by a factor of 1.5.

known as the  
**BEAR TRAP™**



For more information about the AFCON AF735, contact your ASC Engineered Solutions sales representative or visit [asc-es.com](http://asc-es.com).



[asc-es.com](http://asc-es.com)

Building connections that last™

