

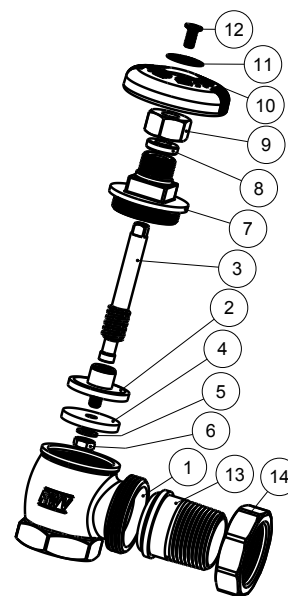
Feature

- 15# WSP
- 60# WOG
- Brass body & bonnet
- EPDM gasket
- FNPT x Male Union Ends
- Phenolic Resin Handwheel



Material

	Part	Material	Specification
1	Body	Brass	B283 C37700
2	Shutter	Brass	B283 C37700
3	Stem	Brass	B283 C37700
4	Seat Gasket	EPDM Perox	-
5	Washer	Steel / Zn plated	A36
6	Nut	Brass	B283 C37700
7	Bonnet	Brass	B283 C37700
8	Packing Ring	PTFE	PTFE
9	Packing Nut	Brass	B283 C37700
10	Handwheel	Phenolic Resin	-
11	Disk	Aluminum	-
12	Screw	Steel / Zn plated	A36
13	Tailpiece	Brass	B283 C37700
14	Union Nut	Brass	B283 C37700



Dimension

Size	A [in]	H [in]	L [in]	P [in]	C [in]	C1 [in]	Wt. [lb]
1/2"	4.04	3.00	2.23	0.50	0.67	0.63	0.82
3/4"	4.19	3.09	2.69	0.77	0.67	0.71	1.12
1"	4.45	3.28	2.95	0.98	0.69	0.91	1.36
1 1/4"	4.66	3.25	3.50	1.18	0.77	1.00	2.08
1 1/2"	5.34	3.74	3.75	1.50	0.79	0.98	3.08

