

#### Feature

- 150# WSP / 600# WOG
- Brass body
- Full port
- FNPT x FNPT
- Threaded ends (ASME B1.20.1-NPT)
- Chrome plated ball
- Virgin PTFE seats
- Blow-out proof stem
- FKM O-ring packing
- CSA ½ psi for Natural gas, Propane & LPG service

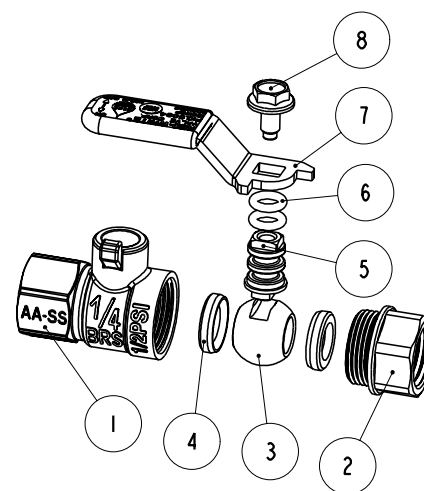


Meet BAA requirement

| Pressure/ Temperature rating |                        |
|------------------------------|------------------------|
| 600 psi from 15 °F to 160 °F | 150 psi max. at 366 °F |

#### Material

|   | Part       | Material                 | Specification    |
|---|------------|--------------------------|------------------|
| 1 | Body       | Brass                    | ASTM B283 C37700 |
| 2 | End piece  | Brass                    | ASTM B283 C37700 |
| 3 | Ball       | Brass / Cr plated        | ASTM B124 C37700 |
| 4 | Seat       | PTFE                     | PTFE             |
| 5 | Stem       | Brass                    | ASTM B124 C37700 |
| 6 | O-ring     | FKM                      | NSF approved     |
| 7 | Handle     | Steel / Dacromet® plated | ASTM A36         |
| 8 | Handle nut | Steel / Dacromet® plated | ASTM A36         |



#### Dimension, Weight

| Size | $\phi$     | $\phi 1$   | A [in] | A1 [in] | C [in] | C1 [in] | H [in] | L [in] | P [in] | Wt. [lb] |
|------|------------|------------|--------|---------|--------|---------|--------|--------|--------|----------|
| ¼"   | ¼ - 18 NPT | ¼ - 18 NPT | 1.57   | 0.79    | 0.45   | 0.45    | 1.09   | 1.61   | 0.31   | 0.16     |

