



Take care of plumbing system repairs or remodeling projects fast with a variety of NIBCO® Wrot Racer® patented premium copper push fittings that you simply push into place until they lock. Top-flight delivery rates ensure you'll have NIBCO product available when you need it, saving you time so you can race ahead to your next project.

PREMIUM COPPER PUSH FITTINGS

FITTINGS

APPLICATIONS

- Specifically Designed for Use in Commercial and Residential Potable Water Systems
- For Use With: Hard-drawn Copper K, L, and M; PEX or PE-RT (with tube stiffeners); CPVC-CTS
- Removal Tool Easily Disconnects Any Joint

MATERIALS & CONSTRUCTION

- 99.9% Pure Wrot Copper Body
- PPSU Engineered Plastic
- Stainless Steel Gripper Ring
- Manufactured From Recyclable Materials

DESIGN CRITERIA

- Certified to 200 PSI and 200° F
- Fittings Meet NSF/ANSI 14, 61 and 372 and ASSE 1061



Push fittings install quickly and easily for a secure connection.



Create a simple and secure connection without any soldering, from 99.9% globally-sourced crimping or joining materials.



Manufactured in the USA from 99.9% globally-sourced pure wrot copper.

AHEAD OF THE FLOW®

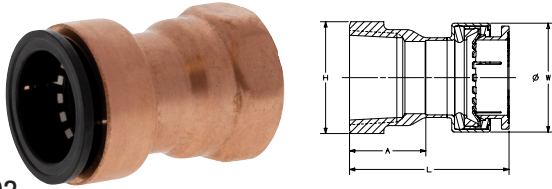
NIBCO INC.
WORLD HEADQUARTERS
 WEB: www.nibco.com

1516 MIDDLEBURY STREET
 ELKHART, IN 46516-4740
 USA

DOMESTIC CUSTOMER SERVICE
 PHONE: 800.234.0227
 FAX: 800.234.0557

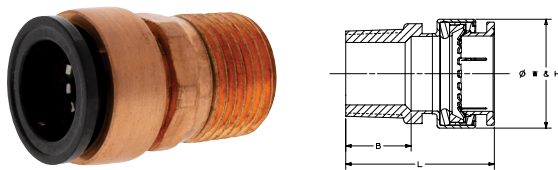
INTERNATIONAL OFFICE
 PHONE: +1/574.295.3327
 FAX: +1/574.295.3455

ADAPTERS



P603
Adapter - Push x Female

NOM. SIZE	APPROX. NET WT./LBS.	DIMENSIONS INCHES			
		A	H	L	W
1/2	0.10	27/32	1 1/16	1 11/16	1
3/4	0.16	29/32	1 5/16	1 7/8	1 9/32
1/2 x 3/4	0.17	1 1/16	1 11/32	2 1/16	1 3/16
1	0.26	1 1/16	1 11/16	2 3/16	1 5/8

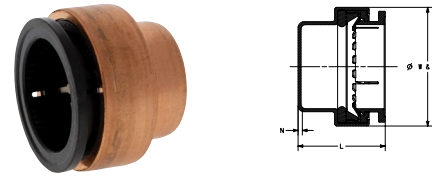


P604
Adapter - Push x Male

NOM. SIZE	APPROX. NET WT./LBS.	DIMENSIONS INCHES			
		B	H	L	W
1/2	0.08	1 1/16	1	1 17/32	1
3/4	0.14	25/32	1 9/32	1 3/4	1 9/32
1/2 x 3/4	0.15	7/8	1 1/4	2 1/32	1 5/8
3/4 x 1/2	0.13	27/32	1 1/8	1 26/32	1 9/32
1	0.24	1 5/16	1 7/16	2 1/16	1 19/32
1 x 3/4	0.20	29/32	1 1/4	2 1/32	1 19/32

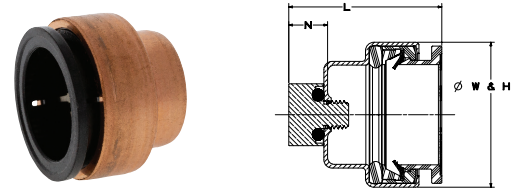
CAPS

Revised 10/24/2022



P617
Cap - Push

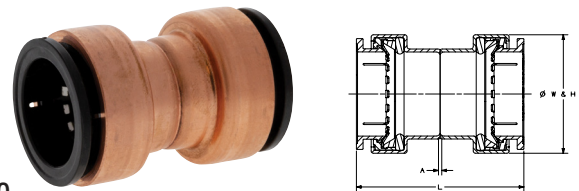
NOM. SIZE	APPROX. NET WT./LBS.	DIMENSIONS INCHES			
		H	L	N	W
1/2	0.03	1	29/32	1/32	1
3/4	0.05	1 9/32	1 1/32	1/32	1 9/32
1	0.08	1 19/32	1 3/16	1/32	1 19/32



P617-D
Cap with Drain - Push

NOM. SIZE	APPROX. NET WT./LBS.	DIMENSIONS INCHES			
		H	L	N	W
1/2	0.06	1	1 7/32	1 1/32	1
3/4	0.08	1 9/32	1 11/32	1 1/32	1 9/32

COUPLINGS

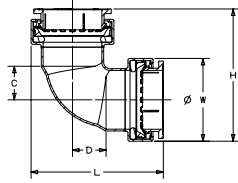


P600
Coupling - Push x Push

NOM. SIZE	APPROX. NET WT./LBS.	DIMENSIONS INCHES			
		A	H	L	W
1/2	0.05	1/32	1	1 3/4	1
3/4	0.09	1/32	1 9/32	2	1 9/32
3/4 x 1/2	0.08	7/32	1 9/32	2 1/32	1 9/32
1	0.14	1/32	1 19/32	2 1/4	1 19/32
1 x 3/4	0.16	1/4	1 19/32	2 3/16	1 19/32

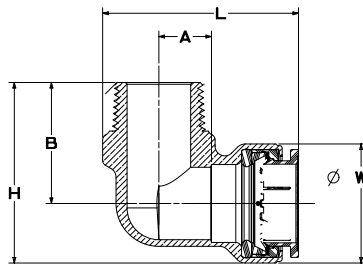
Visit our website for the most current information.

ELBOWS



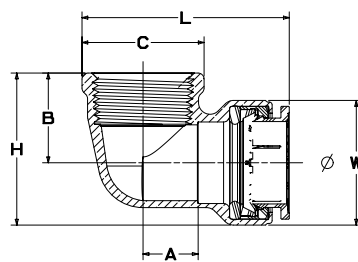
P607
90° Elbow - Push x Push

NOM. SIZE	APPROX. NET WT./LBS.	DIMENSIONS INCHES				
		C	D	H	L	W
1/2	0.07	13/32	13/32	17/8	17/8	1
3/4	0.13	1/2	1/2	27/32	27/32	19/32
3/4 x 1/2	0.18	13/32	7/16	131/32	115/16	111/32
1	0.21	21/32	21/32	29/16	29/16	119/32



P607-3
90° Elbow - Push x Male

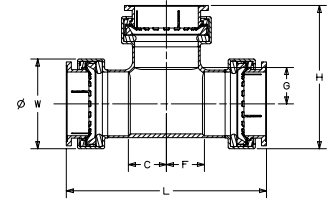
NOM. SIZE	APPROX. NET WT./LBS.	DIMENSIONS INCHES					
		A	B	C	H	L	W
1/2	0.16	1/2	27/32	1/4	13/8	115/16	11/16
3/4	0.26	19/32	31/32	15/16	15/8	27/32	111/32



P607-4
90° Elbow - Push x Female

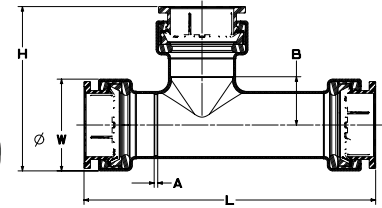
NOM. SIZE	APPROX. NET WT./LBS.	DIMENSIONS INCHES				
		A	B	H	L	W
1/2	0.18	1/2	11/8	15/8	17/8	11/16
3/4	0.33	19/32	13/8	21/32	27/32	111/32

TEES



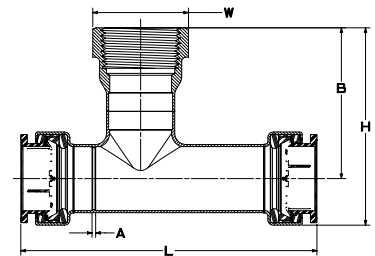
P611
Tee - Push x Push x Push

NOM. SIZE	APPROX. NET WT./LBS.	DIMENSIONS INCHES					
		C	F	G	H	L	W
1/2	0.11	11/32	11/32	13/32	127/32	219/32	1
3/4	0.23	5/8	5/8	11/16	25/16	37/32	19/32
3/4 x 1/2 x 1/2	0.20	5/8	11/32	13/32	27/32	33/32	19/32
3/4 x 1/2 x 3/4	0.24	7/16	25/32	7/16	25/16	311/32	19/32
3/4 x 3/4 x 1/2	0.28	11/32	11/32	7/16	131/32	225/32	111/32
1	0.36	11/16	11/16	21/32	29/16	319/32	119/32
1 x 1 x 3/4	0.36	17/32	17/32	11/32	219/32	315/32	119/32



P615
Repair Tee - Push x Push x Push

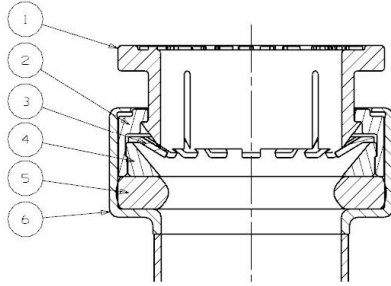
NOM. SIZE	APPROX. NET WT./LBS.	DIMENSIONS INCHES				
		A	B	H	L	W
1/2	0.18	1/16	5/8	115/16	327/32	1
3/4	0.31	1/2	11/16	23/16	43/32	19/32



P615-3
Repair Tee - Push x Push x Female

NOM. SIZE	APPROX. NET WT./LBS.	DIMENSIONS INCHES				
		A	B	H	L	W
1/2	0.24	1/16	113/16	25/16	327/32	11/16
3/4	0.37	1/2	23/32	223/32	43/32	15/16

Visit our website for the most current information.



Lead-Free* Push Fittings - MATERIAL LIST

PART	SPECIFICATION
1. Release Collar	PPSU
2. Upper Cartridge	PPSU
3. Grip Ring	316SS
4. Lower Cartridge	PPSU
5. Seal	EPDM
6. Body	Wrot Copper

ACCESSORIES



Removal Tool

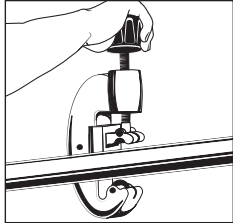
NOM. SIZE	APPROX. NET WT./LBS.
1/4	0.013
3/8	0.013
1/2	0.013
3/4	0.013
1	0.013

Visit our website for the most current information.

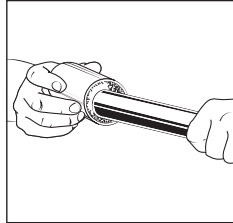
WROT RACER PUSH FITTINGS INSTALLATION INSTRUCTIONS

Before installing, turn water off at main shut-off valve.

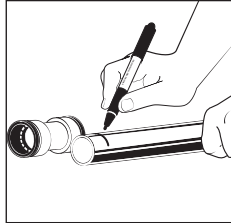
Installation



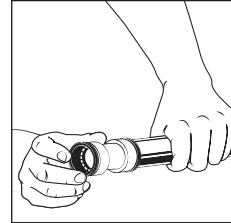
1. Cut tube; ensure a square end-cut for best performance.



2. Remove all sharp edges from both the outer diameter and inner diameter of copper tube. Remove the edge from the outer diameter of CPVC-CTS tube. PEX/PE-RT tubing does not need to be prepared in this manner.

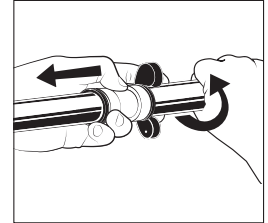


3. Mark insertion depth



4. Push fitting on tube to the mark (The provided tube stiffeners must be inserted into PEX & PE-RT tube prior to tube insertion. Do not use tube stiffeners with copper or CPVC tube.)

Removal



Push the disconnect clip against the release collar and pull the pipe with a twisting action.

Insert Depth Chart

Fitting Size	1/2"	3/4"	1"
Insert Depth - in.	7/8"	1"	1-1/8"
Insert Depth - cm.	2.22	2.54	2.85

NOTE: Fittings are to be used in assembling copper tubing (ASTM B88), CPVC-CTS tubing (ASTM D2846/CSA B137.6), PEX tubing (ASTM F876/CSA B137.5), and/or PE-RT tubing (ASTM F2768 /B137.18).



Made in the USA from recyclable materials.

Patent 10,006,575

Removable & Reusable

Visit our website for the most current information.

NOTES

Visit our website for the most current information.

NIBCO® Wrot Racer® Fittings Limited Warranty

NIBCO INC. LIMITED WARRANTY

Applicable to NIBCO Wrot Racer Premium Copper Push Fittings

NIBCO INC. warrants each NIBCO Wrot Racer Premium Copper Push fitting to be free from defects in materials and workmanship under normal use, service, and maintenance in accordance with the product specifications (including, but not limited to installation recommendations) for a period of twenty-five (25) years from the Warranty Commencement Date. The Warranty Commencement Date shall be the date of installation.

NIBCO will repair or replace – at its option and at no charge – Wrot Racer fittings that have been determined by NIBCO, or an authorized representative or agent thereof, to have failed solely because of a defect in materials or workmanship under normal use, service, and maintenance during the warranty period. Replacements shall be shipped free of charge to the owner.

This limited warranty applies to all Wrot Racer fittings installed, tested, applied, and used in accordance with NIBCO's approved and published recommendations and instructions.

This warranty does not cover any failure or damage for or caused by:

1. any product, parts, or systems which are not manufactured or sold by NIBCO;
2. any Wrot Racer fittings which is used for purposes other than a purpose authorized by NIBCO;
3. any Wrot Racer fittings not installed, tested, applied, used, or maintained in accordance with NIBCO's recommended installation guidelines and instructions;
4. any Wrot Racer fittings not installed or used in accordance with applicable codes;
5. any damage caused by, contributed in whole or in part by, or resulting from, any of the following:
 - a. abuse, misuse, mishandling, alteration, tampering, neglect, or accidental damage such as, without limitation, vandalism;
 - b. natural disasters, such as, without limitation, flooding, windstorm, and lightning;
 - c. attachments or modifications not authorized by NIBCO;
 - d. external, physical or chemical qualities, or an unsuitable or hostile environment,;
 - e. any defects other than those in material or workmanship; or
 - f. any other cause beyond the control of NIBCO.

NIBCO DISCLAIMS ANY AND ALL LIABILITY FOR ANY OTHER DIRECT OR INDIRECT, INCIDENTAL, OR CONSEQUENTIAL DAMAGES OF ANY KIND, INCLUDING BUT NOT LIMITED TO, ECONOMIC LOSS, LOSS OF BUSINESS, LOST PROFITS, PUNITIVE DAMAGES, MOLD INTRUSION, WATER DAMAGE, ETC.

Some states do not allow the exclusion or limitation of damages, so the above limitation or exclusion may not apply to you.

THIS WARRANTY IS THE ONLY WARRANTY FOR THE WROT RACER FITTINGSS PROVIDED BY NIBCO, AND IS AND SHALL BE IN LIEU OF ANY AND ALL OTHER WARRANTIES, EXPRESSED OR IMPLIED, INCLUDING, BUT NOT LIMITED TO, AN IMPLIED WARRANTY OF MERCHANTABILITY OR FITNESS FOR A PARTICULAR PURPOSE, AND FOR ALL OTHER OBLIGATIONS OR LIABILITIES ON THE PART OF A MANUFACTURER. NO EMPLOYEE OF NIBCO, OR ANY OTHER DISTRIBUTOR, AGENT, OR OTHER PERSON OR BUSINESS, IS AUTHORIZED TO MAKE ANY OTHER WARRANTY ON BEHALF OF NIBCO.

Some states do not allow limitations on implied warranties, so the above limitation may not apply to you.

In the event any defect occurs which is believed to be covered by this warranty, NIBCO Technical Services must immediately be contacted by calling 888.446.4226 or emailing CS-TechnicalServices@nibco.com. NIBCO Technical Services after being contacted will make further arrangements for the product's return to NIBCO at the customer's expense for review and evaluation.

This warranty gives you specific legal rights, and you may also have other rights which vary from state to state.



Visit our website for the most current information.

Visit our website for the most current information.