


Installation Instructions

Press Ball Valves

Models: FBV-3-PRESS, LFFBV-3-PRESS, LFFBV-3-PRESS-SS, LFFBV-3-PRxF1960, LFFBV-3-PRxPEX, and LFFBV-3-PRxFIP

1/2" – 2"

⚠ WARNING

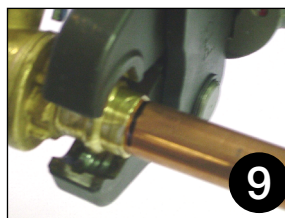
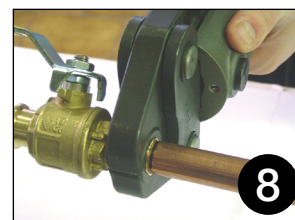
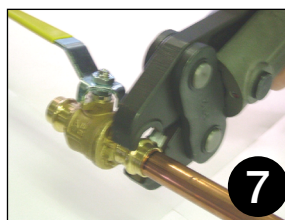
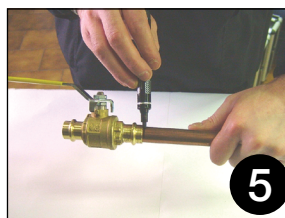
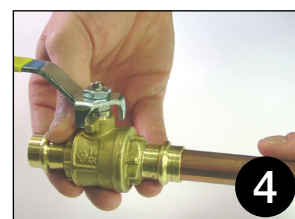
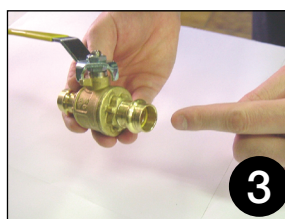
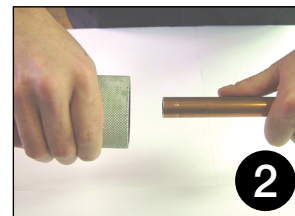
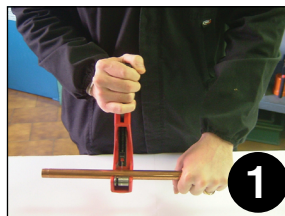


Please read and understand the following instructions for installing FBV-3-Press and LFFBV-3-Press ball valves. Failure to follow all instructions may result in extensive property damage or serious injury.

THINK SAFETY FIRST

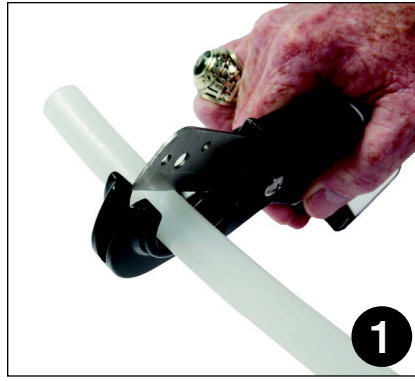
The Watts® Press ball valves are designed for use with Types K, L, and M Hard Copper Tubing sizes 1/2" to 2" and Soft Copper Tubing sizes 1/2" to 1 1/4".

1. Square cut copper tubing at right angle, using a displacement type cutter.
2. To prevent cutting the O-ring, carefully deburr the internal and external surfaces of the tube end.
3. The tubing is now ready to insert into the ball valve. Do not use oils or lubricant on the valve or tube. This will degrade the FBV-3-Press and LFFBV-3-Press EPDM.
4. Slowly rotate the valve while sliding the valve onto the tubing. Insert to the fitting stop. The end of the tubing must be fully inserted and contact the stop.
5. Mark the insertion depth on the tubing at the point where tubing meets valve body.
6. Using an appropriate pressing tool, place the jaw on the valve fitting. Check the insertion mark on the tubing to be sure that the tubing is against the valve stop.
7. Begin creating the press connection. Depress the tool trigger until the jaw has crimped the valve fitting.
8. When the press connection is complete, the jaw can be opened and removed from the valve fitting.
9. When all system joints are complete, pressure testing is to be carried out in accordance with local codes.



F1960 Installation Instructions

1. Cut tube at 90-degrees.
Hint: Slightly rotate cutter during blade engagement.
2. Install PEX sleeve onto outside diameter of tubing.
3. Using an ASTM F1960 tube expander, expand sleeve fully. Repeat expansions, rotating expander $\frac{1}{8}$ -turn between expansions. Note: To limit the amount of time for tube compression onto fitting in cold environments, expand the tube/sleeve slowly and only enough to fully insert the fitting. Keeping sleeves warm will speed retraction and inhibit unequal expansion.
4. Insert fitting into expanded tube and sleeve. Assure proper expansion so that fitting is touching tube and sleeve. Hold fitting in place until tube/sleeve memory constrict annularly around the fitting.
5. The installation is complete with a visibly secure connection. Remove defective connections. Test completed joint.



PEX Installation Instructions

1. Cut the PEX tubing: cut tube at 90-degrees.
2. Slide a PEX clamp onto the end of the PEX tubing. Then, insert the PEX end connection fitting into the end of the tubing. Ensure the fitting is fully seated against the tubing.
3. Slide the clamp over the tubing and fitting, ensuring it is positioned approximately $\frac{1}{8}$ " inch from the end of the tubing. Use a clamp tool to crimp the clamp securely onto the tubing and fitting.
4. Verify that the connection is secure. Repeat above steps for each PEX fitting joint in the system. After all fittings are installed, conduct a pressure test in accordance with local codes and standards to ensure integrity of the system.



Limited Warranty: Watts Regulator Co. (the "Company") warrants each product to be free from defects in material and workmanship under normal usage for a period of one year from the date of original shipment. In the event of such defects within the warranty period, the Company will, at its option, replace or recondition the product without charge.

THE WARRANTY SET FORTH HEREIN IS GIVEN EXPRESSLY AND IS THE ONLY WARRANTY GIVEN BY THE COMPANY WITH RESPECT TO THE PRODUCT. THE COMPANY MAKES NO OTHER WARRANTIES, EXPRESS OR IMPLIED. THE COMPANY HEREBY SPECIFICALLY DISCLAIMS ALL OTHER WARRANTIES, EXPRESS OR IMPLIED, INCLUDING BUT NOT LIMITED TO THE IMPLIED WARRANTIES OF MERCHANTABILITY AND FITNESS FOR A PARTICULAR PURPOSE.

The remedy described in the first paragraph of this warranty shall constitute the sole and exclusive remedy for breach of warranty, and the Company shall not be responsible for any incidental, special or consequential damages, including without limitation, lost profits or the cost of repairing or replacing other property which is damaged if this product does not work properly, other costs resulting from labor charges, delays, vandalism, negligence, fouling caused by foreign material, damage from adverse water conditions, chemical, or any other circumstances over which the Company has no control. This warranty shall be invalidated by any abuse, misuse, misapplication, improper installation or improper maintenance or alteration of the product.

Some States do not allow limitations on how long an implied warranty lasts, and some States do not allow the exclusion or limitation of incidental or consequential damages. Therefore the above limitations may not apply to you. This Limited Warranty gives you specific legal rights, and you may have other rights that vary from State to State. You should consult applicable state laws to determine your rights. **SO FAR AS IS CONSISTENT WITH APPLICABLE STATE LAW, ANY IMPLIED WARRANTIES THAT MAY NOT BE DISCLAIMED, INCLUDING THE IMPLIED WARRANTIES OF MERCHANTABILITY AND FITNESS FOR A PARTICULAR PURPOSE, ARE LIMITED IN DURATION TO ONE YEAR FROM THE DATE OF ORIGINAL SHIPMENT.**



USA: T: (978) 689-6066 • Watts.com

Canada: T: (888) 208-8927 • Watts.ca

Latin America: T: (52) 55-4122-0138 • Watts.com

