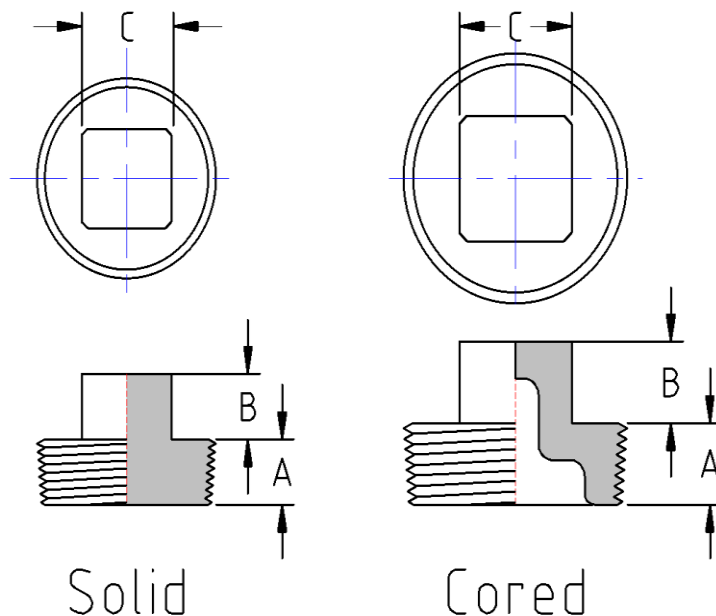




SERVICE METAL
Trust In Every Connection

MASTER DISTRIBUTOR OF
PIPE FITTINGS & VALVES

Square Head Plug, Cored
125# Lead Free Brass*
Inches / Pounds



Nominal Pipe Size	Min. Thread Length (A)	Height of Square Min. (B)	Nominal Width Across Flats (C)	Solid or Cored	Approx. Weight (in Pounds)
1/8	0.27	0.24	0.28	Solid	0.17
1/4	0.41	0.28	0.38	Solid	0.03
3/8	0.41	0.31	0.44	Solid	0.06
1/2	0.54	0.38	0.56	Cored	0.08
3/4	0.55	0.44	0.63	Cored	0.13
1	0.69	0.50	0.81	Cored	0.22
1 1/4	0.71	0.56	0.94	Cored	0.32
1 1/2	0.73	0.62	1.13	Cored	0.45
2	0.76	0.68	1.31	Cored	0.66
2 1/2	1.07	0.74	1.50	Cored	1.13
3	1.13	0.80	1.69	Cored	1.67
4	1.22	0.92	2.25	Cored	2.77

Lead Free Brass* Castings conform to ASTM B584 C89833
Lead Free Brass* Fitting Dimensions conform to ASME B16.15
NPT Threads on all fittings conform to ASME B1.20.1

NSF/ANSI/CAN 61 Drinking Water System Components – Health Effects
NSF/ANSI/CAN 372 Drinking Water System Components – Lead Content

***Conforms with lead content requirements for lead-free plumbing as defined by the U.S. Safe Drinking Water Act. Certified <0.25 weighted average % lead.**