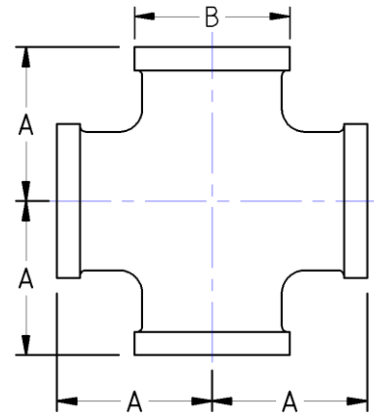




SERVICE METAL
Trust In Every Connection

MASTER DISTRIBUTOR OF
PIPE FITTINGS & VALVES

Cross
125# Lead Free Brass*
Inches / Pounds



Nominal Pipe Size	Center to End (A)	Outside Diameter (B)	Nominal Metal Thickness	Approximate Weight (in Pounds)
1/8	0.54	0.67	0.08	0.09
1/4	0.71	0.81	0.08	0.15
3/8	0.82	1.00	0.09	0.25
1/2	1.01	1.17	0.09	0.42
3/4	1.18	1.42	0.10	0.64
1	1.43	1.72	0.11	1.08
1 1/4	1.69	2.10	0.12	1.57
1 1/2	1.84	2.38	0.13	2.07
2	2.12	2.92	0.15	3.16
2 1/2	2.70	3.49	0.17	5.76
3	3.08	4.20	0.19	8.40

Lead Free Brass* Castings conform to ASTM B584 C89833
Lead Free Brass* Fitting Dimensions conform to ASME B16.15
NPT Threads on all fittings conform to ASME B1.20.1

NSF/ANSI/CAN 61 Drinking Water System Components – Health Effects
NSF/ANSI/CAN 372 Drinking Water System Components – Lead Content

***Conforms with lead content requirements for lead-free plumbing as defined by the U.S. Safe Drinking Water Act. Certified <0.25 weighted average % lead.**