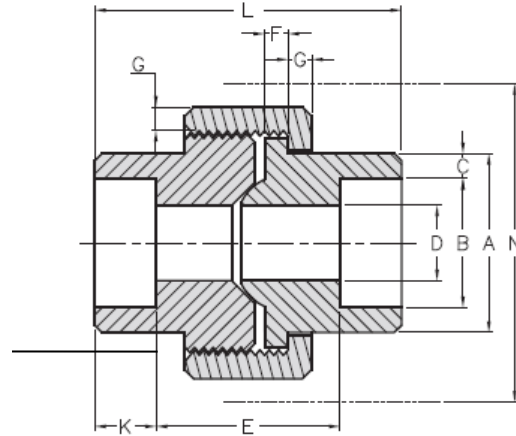




Socket Weld Union  
**6000# Forged Steel**  
Inches / Pounds

H-THREADS  
MINIMUM 4(FOUR) FULL  
THREADS ENGAGEMENT  
CLASS 2A/2B FIT  
ASME B1.1



Nominal pipe size	A Min.	B Max. Min.	C Min.	D Max. Min.	E Max. Min.	F Min.	G Min	H Thrds per inch	J Min	K Min	L	N	Approximate Weight (in Pounds)
1/2	1.46	0.875 0.855	0.204	0.494 0.434	1.06 0.81	0.145	0.145	11	0.059	0.38	2.24	2.6	1.30
3/4	1.79	1.085 1.065	0.238	0.642 0.582	1.25 1.00	0.160	0.160	11	0.066	0.50	2.44	3.1	1.88
1	2.16	1.350 1.330	0.273	0.845 0.785	1.35 1.03	0.180	0.175	10	0.073	0.50	2.80	3.7	3.08
1 1/4	2.42	1.695 1.675	0.273	1.190 1.130	1.60 1.28	0.210	0.205	10	0.084	0.50	3.01	4.4	3.86
1 1/2	2.96	1.935 1.915	0.307	1.368 1.308	1.66 1.34	0.230	0.220	10	0.091	0.50	3.39	5.2	6.30
2	3.61	2.426 2.406	0.374	1.717 1.657	1.79 1.47	0.260	0.250	8	0.106	0.62	4.03	5.9	10.30

**\*MSS SP-83**