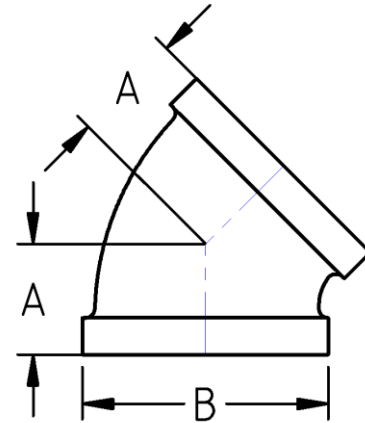




Threaded 45° Elbow
Std Pattern
150# Cast Stainless Steel
Inches / Pounds



Nominal Pipe Size	Center to End (A)	Outside Diameter (B)	Approx. Weight (in Pounds)
1/8"	0.73	0.63	0.07
1/4"	0.75	0.70	0.08
3/8"	0.75	0.89	0.10
1/2"	0.87	1.18	0.21
3/4"	0.91	1.39	0.30
1"	1.10	1.75	0.51
1-1/4"	1.26	2.05	0.66
1-1/2"	1.38	2.34	0.90
2"	1.65	2.83	1.32
2-1/2"	1.85	3.56	2.9
3"	2.05	4.19	3.9
4"	2.60	5.29	6.2

****The material composition and quality comply with ASTM A351/A351M
"Standard Specification for Castings, Austenitic, for Pressure-Containing
Parts"***

****NPT Threads on all fittings conform to ASME B1.20.1***