



# SAFE-T-PAN® TANKLESS WATER HEATER PAN

PAT. D989-939



- Durable H.D.P.E
- Will not rust or corrode
- Four pre-drilled screw holes for mounting
- Selection of 3 drain outlets (use 1-3 7/8" hole saw)
- Fits most tankless water heaters
- Made in the USA



Wall Mount



Floor Mount

Safe-T-Pan® Tankless Water Heater Pans are the finishing touch to any tankless water heater installation.

Made from high-impact HDPE, this emergency drain pan is as durable as steel, but will not corrode. With 3 molded drain outlets to choose from, the pan can easily be configured from wall-mount to floor mount.

Each kit contains PVC and CPVC adapters for backup drainage piping.

\*Note: Safe-T-Pan® is not a primary condensate pan, but a secondary pan for unexpected tank leaks.



## TANKLESS DRAIN PAN INSTALLATION INSTRUCTIONS

---



PAT. D989-939

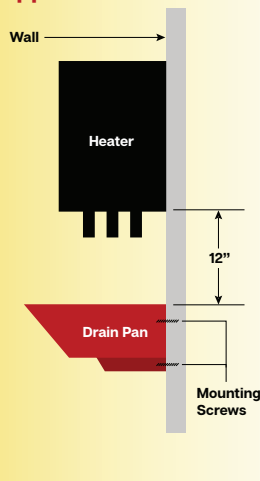


PAT. D989-939

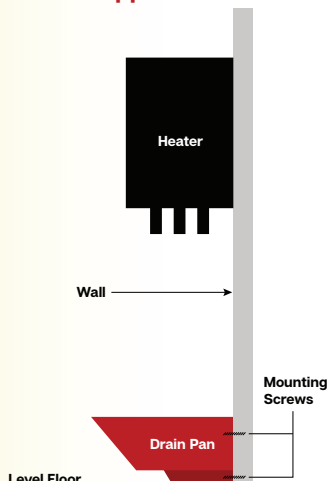
## TANKLESS DRAIN PAN INSTALLATION INSTRUCTIONS

**NOTE:** PRIOR TO INSTALLATION, VERIFY THAT THE TANKLESS HEATER DIMENSIONS ARE SMALLER THAN THE SIZE OF THE DRAIN PAN FOR PROPER COVERAGE.  
DRAIN PAN DIMENSIONS ARE 19-3/4" WIDTH X 14-1/2" DEPTH.

### Wall Application



### Floor Application



#### STEP 1

Select which drain outlet will be used. Left, center, or right.

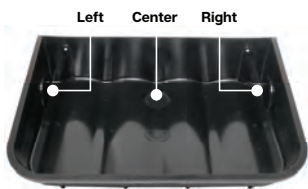
#### STEP 2

Using a 1-3/8" hole saw, core hole in designated pan outlet.

#### STEP 3

Install fitting placing gasket over threaded shank, insert fitting, then apply locknut and tighten snugly. Any penetrations should be caulked to allow maximum moisture protection.

**Note:** Drain traps are not to be installed in the drain piping of this pan. Confirm tankless water heater is installed plumb and level. Do not drill out bottom drain hole if pan is to be floor mounted.



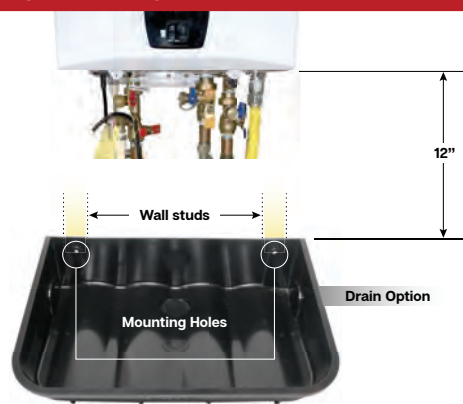
PAT. D989-939

## WALL MOUNTED INSTALLATION

**Note:** Install drain pan with 12" clearance to bottom of tankless heater

#### STEP 1

Level and attach pan to wall. Screw-holes are on 16" centers for mounting directly to studs. #10 stainless steel screws included.



#### STEP 2

Connect drain pipe to drain pan outlet using proper glue type PVC or CPVC glue, depending on the type of drain pan adapter fitting.

**Note:** Drain pan line should be a dedicated line and NOT tied into or shared with any other drains. Do not put condensate drain from heater into drain pan.

## FLOOR INSTALLATION

#### STEP 1

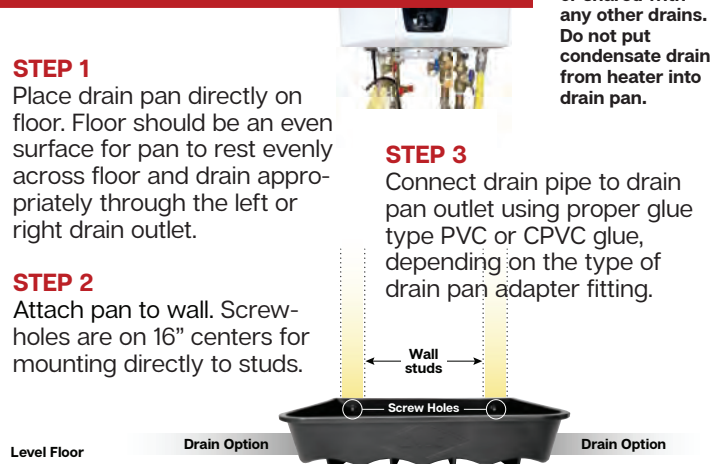
Place drain pan directly on floor. Floor should be an even surface for pan to rest evenly across floor and drain appropriately through the left or right drain outlet.

#### STEP 2

Attach pan to wall. Screw-holes are on 16" centers for mounting directly to studs.

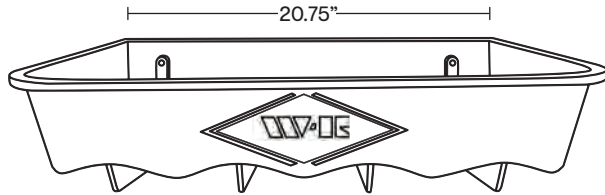
#### STEP 3

Connect drain pipe to drain pan outlet using proper glue type PVC or CPVC glue, depending on the type of drain pan adapter fitting.





## Tankless Water Heater Drain Pan



The Safe T Pan Tankless Water Heater Drain Pan is designed for use with tankless water heaters. The Safe T Pan is made of a thick, strong, and durable High Density Polyethylene. The Safe T Pan has three drain outlet options for left, right or center drain connections. Safe T Pan will not rust or corrode, and offers a 3 year limited warranty. The Safe T Pan comes with 4 predrilled screw holes and 4 screws for mounting. The Safe T Pan is made in the USA.

### Features

- Durable H.D.P.E (High Density Polyethylene)
- Will not rust or corrode
- Four pre-drilled screw holes for mounting
- Selection of 3 drain outlets (use 1-3"/8" hole saw)
- Fits most tankless water heaters
- Made in the USA

### Included Components

- Product Code: DPA-CPVC - 1"
- Product Code: DPA-PVC - 1" / 1-1/2"

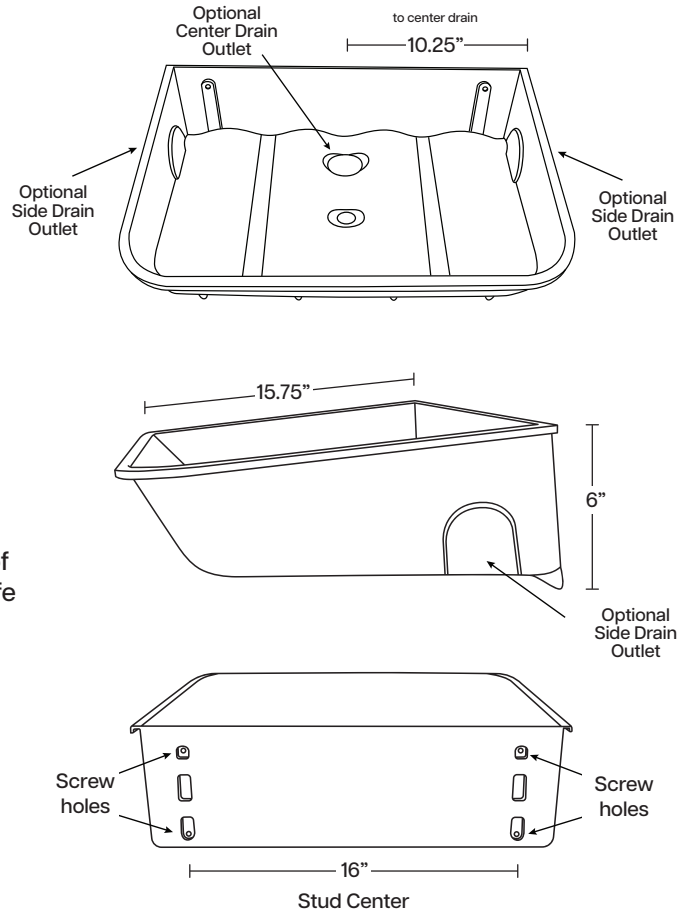
### Notes

- Install this product according to installation instructions

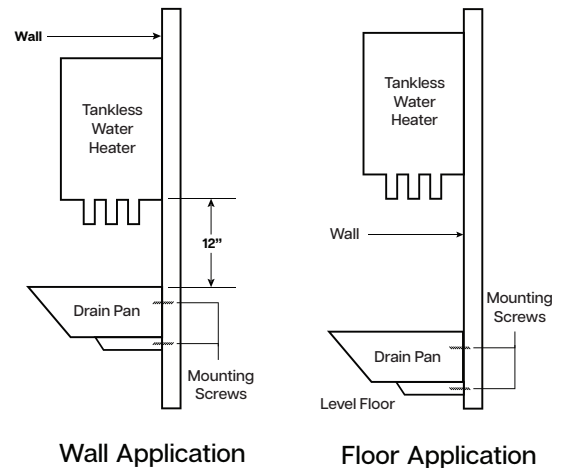
### Warranty

- 3 year limited warranty

PRODUCT SUBMITTAL	
JOB NAME	
DATE	
ARCHITECT/ENGINEER	
CONTRACTOR	
TAG	
NOTES	



### Typical Installation



**Fig. Number: 1964002**