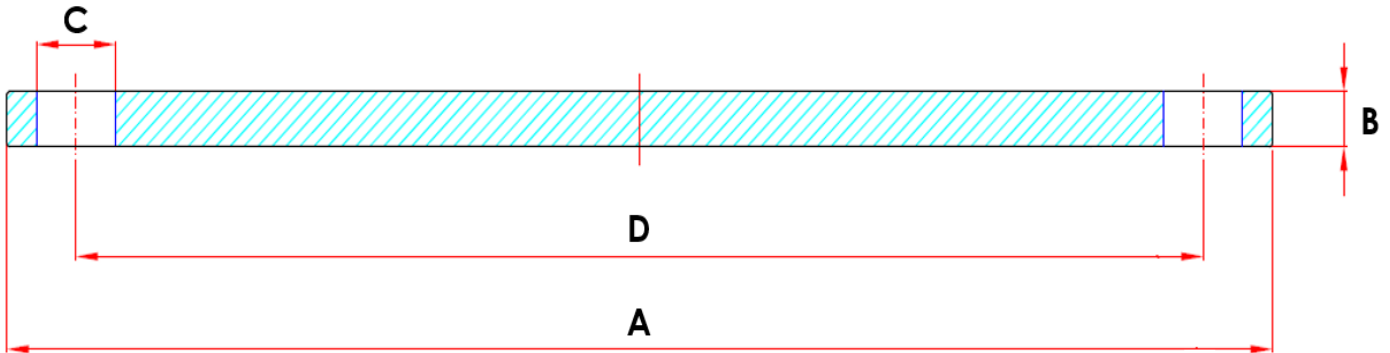


BLIND PLATE FLANGE



Please Note: Pictured is a flange with 4 bolt holes. The number of bolt holes change based on the diameter of the flange.

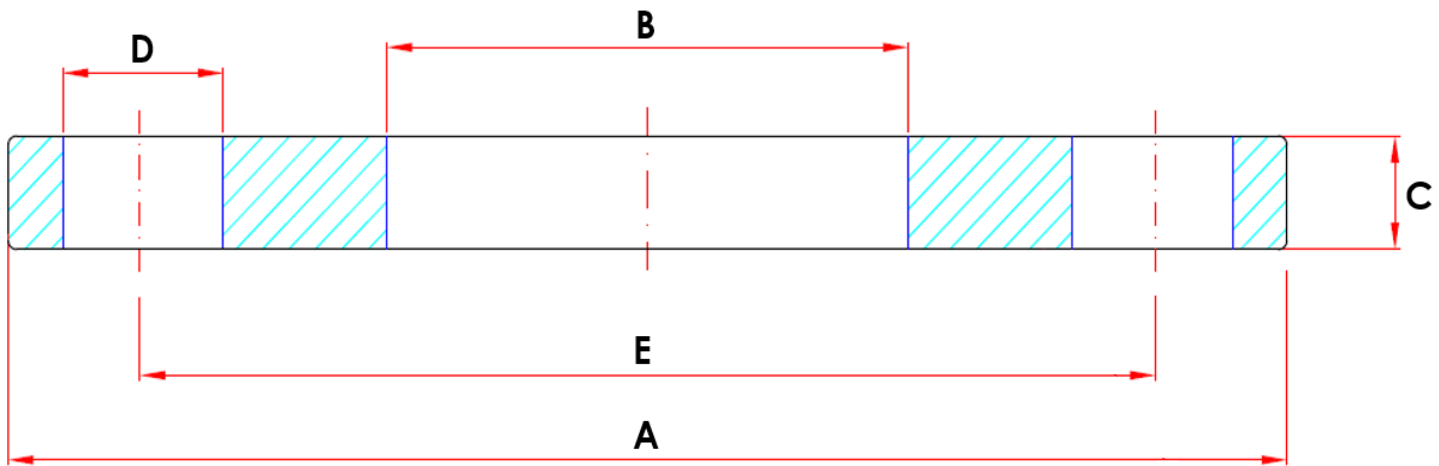


SIZE (IN)	PART NUMBERS		A - OUTSIDE DIAMETER (IN)	B - THICKNESS (IN)	C - DIAMETER OF BOLT HOLES (IN)	D - BOLT CIRCLE (IN)	NUMBER OF BOLT HOLES	WEIGHT (LB)
	304	316						
1"	AC460BL-16	AC660BL-16	4.25	0.5	0.62	3.12	4	1.96
1-1/4"	AC460BL-20	AC660BL-20	4.62	0.5	0.62	3.50	4	2.36
1-1/2"	AC460BL-24	AC660BL-24	5.00	0.5	0.62	3.88	4	2.78
2"	AC460BL-32	AC660BL-32	6.00	0.5	0.75	4.75	4	4.01
2-1/2"	AC460BL-40	AC660BL-40	7.00	0.5	0.75	5.50	4	5.56
3"	AC460BL-48	AC660BL-48	7.50	0.5	0.75	6.00	4	6.39
4"	AC460BL-64	AC660BL-64	9.00	0.5	0.75	7.50	8	9.06
5"	AC460BL-80	AC660BL-80	10.00	0.5	0.88	8.50	8	11.13
6"	AC460BL-96	AC660BL-96	11.00	0.5	0.88	9.50	8	13.60
8"	AC460BL-128	AC660BL-128	13.50	0.5	0.88	11.75	8	20.81
10"	AC460BL-160	AC660BL-160	16.00	0.5	1.00	14.25	12	42.75
12"	AC460BL-192	AC660BL-192	19.00	0.5	1.00	17.00	12	61.29

TUBE OD SLIP-ON PLATE FLANGE



Please Note: Pictured is a flange with 4 bolt holes. The number of bolt holes change based on the diameter of the flange.

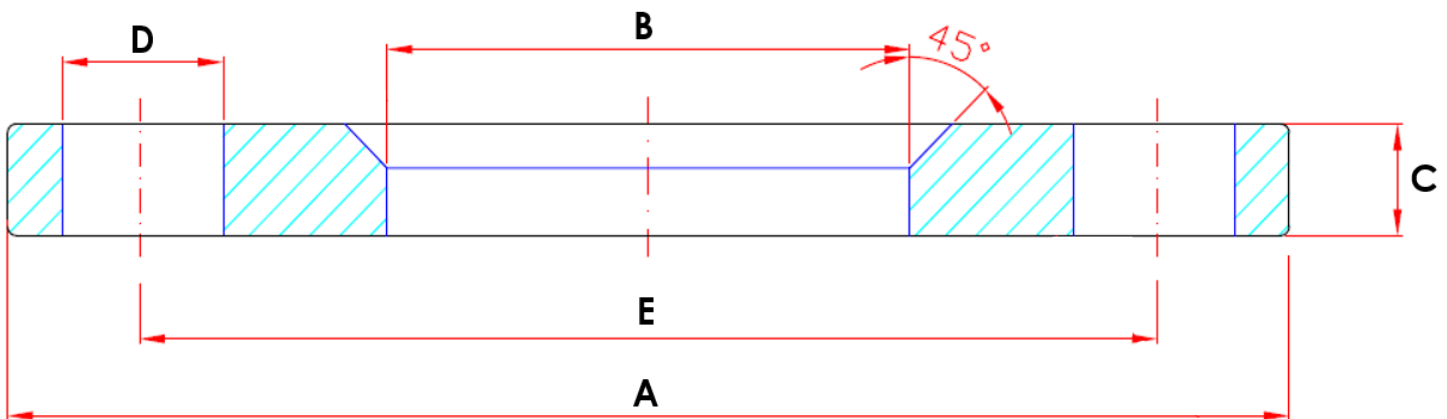


SIZE (IN)	PART NUMBERS		A - OUTSIDE DIAMETER (IN)	B - INSIDE DIAMETER (IN)	C - THICKNESS (IN)	D - DIAMETER OF BOLT HOLES (IN)	E - BOLT CIRCLE (IN)	NUMBER OF BOLT HOLES	WEIGHT (LB)
	304	316							
1"	AC460T-16	AC660T-16	4.25	1.063	0.5	0.62	3.12	4	1.74
1-1/4"	AC460T-20	AC660T-20	4.62	1.313	0.5	0.62	3.50	4	2.01
1-1/2"	AC460T-24	AC660T-24	5.00	1.563	0.5	0.62	3.88	4	2.34
2"	AC460T-32	AC660T-32	6.00	2.063	0.5	0.75	4.75	4	3.28
2-1/2"	AC460T-40	AC660T-40	7.00	2.563	0.5	0.75	5.50	4	4.52
3"	AC460T-48	AC660T-48	7.50	3.063	0.5	0.75	6.00	4	4.89
4"	AC460T-64	AC660T-64	9.00	4.063	0.5	0.75	7.50	8	6.59
5"	AC460T-80	AC660T-80	10.00	5.063	0.5	0.88	8.50	8	7.32
6"	AC460T-96	AC660T-96	11.00	6.063	0.5	0.88	9.50	8	8.27
8"	AC460T-128	AC660T-128	13.50	8.063	0.5	0.88	11.75	8	11.86
10"	AC460T-160	AC660T-160	16.00	10.063	0.5	1.00	14.25	12	18.39
12"	AC460T-192	AC660T-192	19.00	12.063	0.5	1.00	17.00	12	26.87

IPS SLIP-ON BEVEL X SQUARE PLATE FLANGE

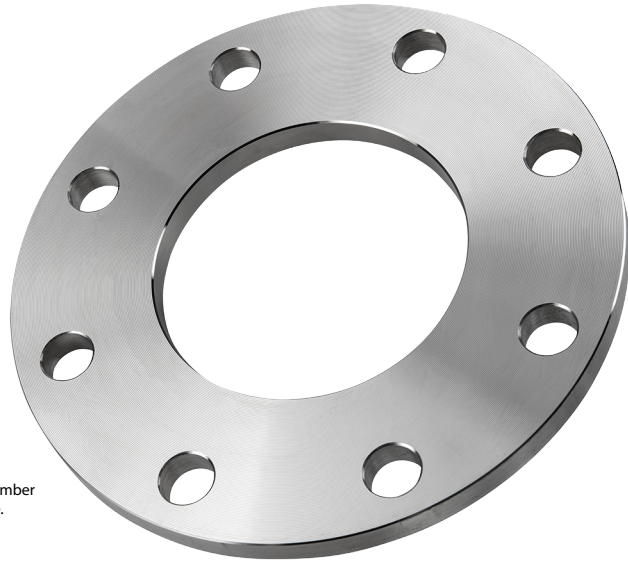


Please Note: Pictured is a flange with 4 bolt holes. The number of bolt holes change based on the diameter of the flange.

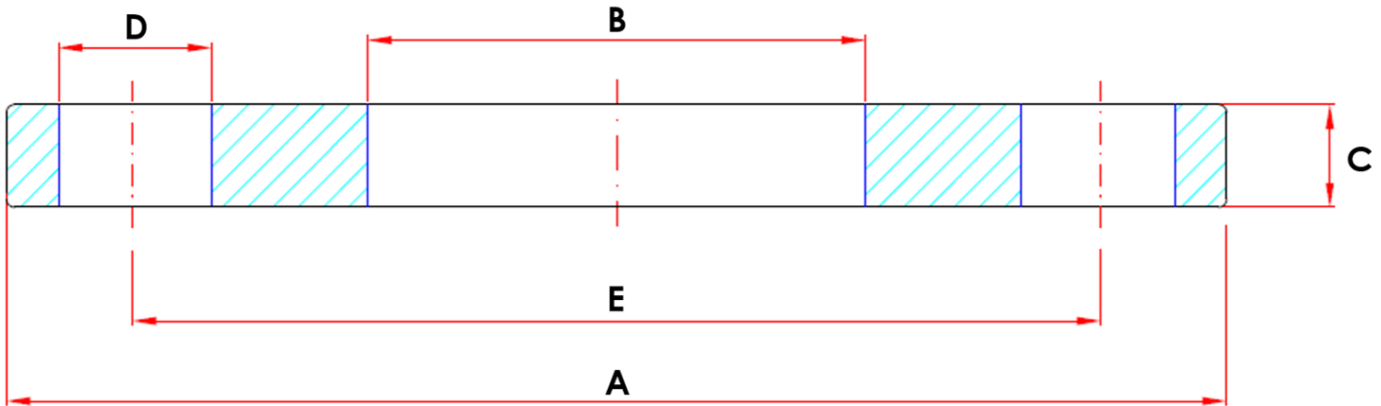


SIZE (IN)	PART NUMBERS		A - OUTSIDE DIAMETER (IN)	B - INSIDE DIAMETER (IN)	C - THICKNESS (IN)	D - DIAMETER OF BOLT HOLES (IN)	E - BOLT CIRCLE (IN)	NUMBER OF BOLT HOLES	WEIGHT (LB)
	304	316							
1"	AC460L-16	AC660L-16	4.25	1.36	0.5	0.62	3.12	4	1.74
1-1/4"	AC460L-20	AC660L-20	4.62	1.70	0.5	0.62	3.50	4	2.01
1-1/2"	AC460L-24	AC660L-24	5.00	1.94	0.5	0.62	3.88	4	2.31
2"	AC460L-32	AC660L-32	6.00	2.44	0.5	0.75	4.75	4	3.28
2-1/2"	AC460L-40	AC660L-40	7.00	2.94	0.5	0.75	5.50	4	4.52
3"	AC460L-48	AC660L-48	7.50	3.57	0.5	0.75	6.00	4	4.89
4"	AC460L-64	AC660L-64	9.00	4.60	0.5	0.75	7.50	8	6.59
5"	AC460L-80	AC660L-80	10.00	5.66	0.5	0.88	8.50	8	7.32
6"	AC460L-96	AC660L-96	11.00	6.72	0.5	0.88	9.50	8	8.27
8"	AC460L-128	AC660L-128	13.50	8.72	0.5	0.88	11.75	8	11.86
10"	AC460L-160	AC660L-160	16.00	10.88	0.5	1.00	14.25	12	18.43
12"	AC460L-192	AC660L-192	19.00	12.88	0.5	1.00	17.00	12	26.87

IPS SLIP-ON SQUARE X SQUARE PLATE FLANGE



Please Note: Pictured is a flange with 8 bolt holes. The number of bolt holes change based on the diameter of the flange.



SIZE (IN)	PART NUMBERS		A - OUTSIDE DIAMETER (IN)	B - INSIDE DIAMETER (IN)	C - THICKNESS (IN)	D - DIAMETER OF BOLT HOLES (IN)	E - BOLT CIRCLE (IN)	NUMBER OF BOLT HOLES	WEIGHT (LB)
	304	316							
1"	AC460NB-16	AC660NB-16	4.25	1.36	0.5	0.62	3.12	4	1.74
1-1/4"	AC460NB-20	AC660NB-20	4.62	1.70	0.5	0.62	3.50	4	2.01
1-1/2"	AC460NB-24	AC660NB-24	5.00	1.94	0.5	0.62	3.88	4	2.31
2"	AC460NB-32	AC660NB-32	6.00	2.44	0.5	0.75	4.75	4	3.28
2-1/2"	AC460NB-40	AC660NB-40	7.00	2.94	0.5	0.75	5.50	4	4.52
3"	AC460NB-48	AC660NB-48	7.50	3.57	0.5	0.75	6.00	4	4.89
4"	AC460NB-64	AC660NB-64	9.00	4.60	0.5	0.75	7.50	8	6.59
5"	AC460NB-80	AC660NB-80	10.00	5.66	0.5	0.88	8.50	8	7.32
6"	AC460NB-96	AC660NB-96	11.00	6.72	0.5	0.88	9.50	8	8.27
8"	AC460NB-128	AC660NB-128	13.50	8.72	0.5	0.88	11.75	8	11.86
10"	AC460NB-160	AC660NB-160	16.00	10.88	0.5	1.00	14.25	12	18.43
12"	AC460NB-192	AC660NB-192	19.00	12.88	0.5	1.00	17.00	12	26.87