

GEMINI® CONVERTIBLE HAND TRUCKS



GEMINI®

The Original Convertible Hand Trucks

Benefits



Gemini® XL

Gemini® Sr.

Gemini® Jr.

- 2-in-1 truck converts from 2 to 4 wheels in seconds
- High capacities reduce number of trips per day, increasing productivity
- Bolted cross braces are up to 10 times more rigid and over twice as strong as riveted braces due to custom engineered internal rib structure
- Trilobular, thread locking screws exceed IFI locking standards encompassing extreme resistance to vibrational loosening
- Strong, lightweight construction reduces user fatigue
- Optional accessories available to meet all delivery needs
- Modular design means no welds to break, all parts are replaceable for longer product life

As easy as 1... 2... 3

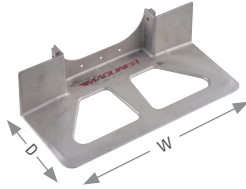


SPECIFICATIONS

	Gemini Jr. GMK16UA4	Gemini Sr. GMK81UA4	Gemini XL XLSP
Overall width	21"	21"	22-3/4"
Frame width	12"	12"	14"
Deck width	12"	12"	17"
Overall length, 4 wheel	47-1/2"	55-3/4"	57-1/4"
Height as hand truck	51"	61"	62-3/4"
Handle height as platform truck	40"	45-1/8"	45-3/4"
Platform bed length	38"	51"	53-3/4"
Capacity as hand truck	500 lbs.	500 lbs.	500 lbs.
Capacity as platform truck	1,000 lbs.	1,000 lbs.	1,250 lbs.
Platform height from floor	10-1/2"	10-1/2"	11-3/16"
Standard wheel (pneumatic)	10"	10"	10"
Casters (standard swivel)	5" x 1-1/4"	5" x 1-1/4"	6" x 2"
Nose	18" x 7-1/2"	18" x 7-1/2"	18" x 9"
Shipping weight	44 lbs.	45 lbs.	54 lbs.

Options

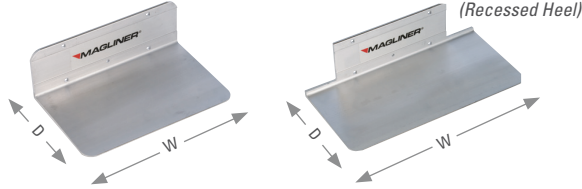
DIE-CAST NOSES



P/N	M/N	W"	D"	WT.(LBS.)
300200	AA	14	7-½	4.0
300196	HA	14	12	5.0
300201	UA	18	7-½	5.0

Designed with aluminum alloys chosen for high strength and corrosion resistance.

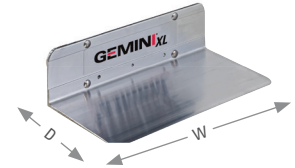
EXTRUDED ALUMINUM NOSES



P/N	M/N	W"	FLUSH MOUNT		RECESSED MOUNT*	WT.(LBS.)
			D"	D"		
300244	E1	14	9	7-½	4.5	
300254	E2	14	9	N/A	5.0	
300245	G1	18	9	7-½	5.5	
300248	G2	18	9	N/A	6.0	
300203	K1	16	12	N/A	7.0	
300215	K2	20	12	N/A	8.5	

6000 series alloy designed with a tapered profile and leading edge for ease of use and maximum strength to weight ratio.

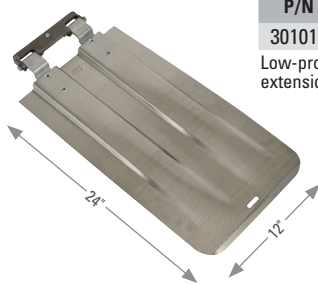
GEMINI XL EXTRUDED NOSE



P/N	W"	D"	WT.(LBS.)
302782	18	9	5.95

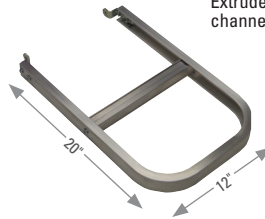
Flush mount only.

FOLDING NOSES (300 Pound Capacity)



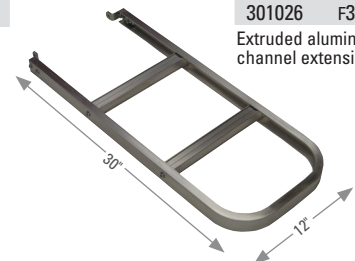
P/N	M/N	WT.(LBS.)
301019	F1	4.0

Low-profile formed aluminum extension.



P/N	M/N	WT.(LBS.)
301025	F2	2.5

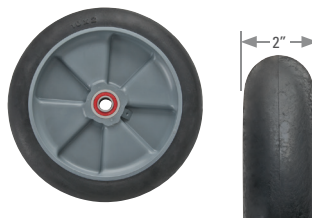
Extruded aluminum channel extension.



P/N	M/N	WT.(LBS.)
301026	F3	4.0

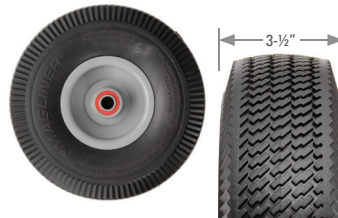
Extruded aluminum channel extension.

WHEELS



P/N	M/N	D"	WT.(LBS.)
101030	1030	10	3.0

Puncture resistant, non-marking balloon cushion rubber on one-piece polyolefin hub with semi-precision bearings.



P/N	M/N	D"	WT.(LBS.)
131010	1010	10	4.0

Puncture resistant, non-marking microcellular foam tire on one-piece steel hub with semi-precision bearings.



P/N	M/N	D"	WT.(LBS.)
121060	1060	10	4.5

4-Ply pneumatic tube-type tire with three-piece off-set hub and semi-precision bearings.



P/N	M/N	D"	WT.(LBS.)
111070	1070	10	2.5

Puncture resistant, non-marking microcellular tire on one-piece high-density, interlocking polyethylene hub with semi-precision bearings.



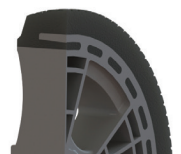
P/N	M/N	D"	WT.(LBS.)
111075	1075	10	3.0

Puncture resistant, non-marking microcellular tire on one-piece high-density, interlocking polyethylene hub with semi-precision bearings.



P/N	M/N	D"	WT.(LBS.)
111080	1080	10	4.0

Puncture resistant, non-marking microcellular tire on one-piece high-density, interlocking polyethylene hub with semi-precision bearings.



Flow through design interlocks rubber, preventing run-off and scalping. (111070, 111075 and 111080 wheels)

GEMINI®

The Original Convertible Hand Trucks

Options

GEMINI® CASTERS



P/N	D"	W"	WT.(LBS.)
131020	5	1-¼	2.0

Gray polyurethane with flat tread. Best for heavy loads, outdoor, or warehouse surfaces due to hard compound.



P/N	D"	W"	WT.(LBS.)
131030	5	1-¼	2.0

Thermoplastic rubber with flat tread. Softer compound is best for moderate or indoor loads, quiet, non-marring.



P/N	D"	W"	WT.(LBS.)
131031	5	1-¼	2.0

Thermoplastic rubber with round tread. Round tread allows the caster to turn easier and is best for areas requiring sharp turns.



P/N	WT.(LBS.)
51010	.25

Brake kit for 5" x 1-1/4" casters to be used on level surfaces.



P/N	D"	W"	WT.(LBS.)
130025	6	2	3.5

Thermoplastic rubber caster with brake to be used on level surfaces.

P/N	D"	W"	WT.(LBS.)
131020B	5	1-¼	2.25

Gray polyurethane with brake to be used on level surfaces.

P/N	D"	W"	WT.(LBS.)
131030B	5	1-¼	2.25

Thermoplastic rubber with brake to be used on level surfaces.

P/N	D"	W"	WT.(LBS.)
131031B	5	1-¼	2.25

Thermoplastic rubber with brake to be used on level surfaces.

Accessories

SNAP ON DECKS



- Snaps in place quickly and removes easily
- Great for carrying small packages
- Formed from strong embossed aluminum
- Stays securely in place

P/N	WT.(LBS.)
301644 Gemini Jr.	5.5
301645 Gemini Sr.	6.5

ACCESSORIES



P/N	WT.(LBS.)
86006	2.5

Heavy-duty cast stair climbers with replaceable low-friction polymer glide bars (for Gemini Sr. only).



P/N	WT.(LBS.)
302725	4.5

Load containment arm (for Gemini XL only).

MOLDED ENGINEERED PLASTIC CURB RAMP



P/N	WT.(LBS.)
PKR220	9.0

Not intended for use with Gemini XL.

- Light and portable, easy to handle
- Aggressive non-skid surface for secure footing
- Open surface to allow debris to pass through
- Strong and durable

SPECIFICATIONS	
Usable width	24"
Overall width	27"
Overall length	27"
Service range	Up to 8"
Capacity	600 lbs.
Weight	9 lbs.

ALUMINUM CURB RAMP



P/N	WT.(LBS.)
ALCR	16.0

- Lightweight
- Corrosion-resistant aluminum
- Replaceable safety walk strips for secure footing
- 2" x 5" Hand cut-out for easy handling
- 1-¼" High safety side rails

SPECIFICATIONS	
Usable width	26-½"
Overall width	27"
Overall length	27"
Service range	2-½" - 8"
Capacity	750 lbs.
Weight	16 lbs.

MAGLINER®

magliner.com

📍 Magline, Inc.
1205 West Cedar Street | Standish, MI 48658
📞 1.800.MAGLINE (624.5463)
(989) 512.1000 (Outside U.S. & Canada)
📠 Fax: (989) 803.5941