



5278-CWP

15 Amp, 125 Volt, Power Inlet Receptacle, Straight Blade, Industrial Grade

15 Amp, 125 Volt, NEMA 5-15P, 2P, 3W, Power Inlet Receptacle, Straight Blade, Industrial Grade, Grounding, , Standard Wire Wells Wired, Nylon Strap, - Gray

ROHS Compliant : Yes

Leviton's Straight Blade Power Inlets are suitable for industrial indoor and outdoor applications. Glass-filled thermoplastic cover and plate provides outstanding impact resistance and durability. Stainless steel external hardware resists corrosive effects of moisture as dual gaskets, one under plate and one under lid, provide for a superior weather-resistant fit.

UPC Code : 078477018712

Country Of Origin : United States

NEMA :  5-15P

Technical Information

AC Horsepower Ratings

At Rated Voltage : 1/2 HP

Electrical Specifications

Amperage : 15 A

Current Limiting : Full Rated Current

Dielectric Voltage :
Withstands 1500V per UL498

Grounding : Grounding

Pole : 2

Temperature Rise : Max 30C
after 250 cycles OL at 200
percent rated current

Voltage : 125 VAC

Wire : 3

Environmental Specifications

Environment : Dry

Flammability : Rated V-2 per
UL 94

Operating Temperature : -40°
C to 60°C

Material Specifications

Body Material : Nylon

Color : Gray

Cover and Plate Material :
Glass-Filled Thermoplastic

Face Material : Nylon

Grounding Screw : Brass 8-32

Line Contacts : Brass

Strap Material : Nylon

Terminal Screws : Brass 10-32

Mechanical Specifications

Product ID : Markings are
permanently marked on device

Terminal Accom. : 18-10 AWG

Product Features

Color : Gray

Device Type : Straight Blade
Flanged Inlet

Terminal ID : Brass-Hot,
Green-Ground, Silver-Neutral

NEMA : 5-15P

Termination : Standard Wire
Wells

Standards and Certifications

ANSI : C-73

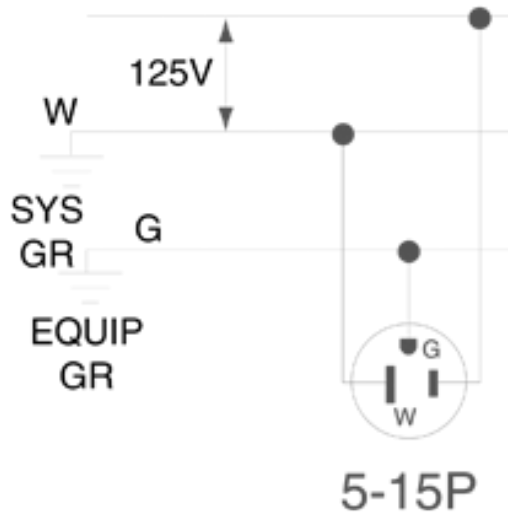
CSA C22.2 No. 42 : File LR-
16347

NEMA : WD-6

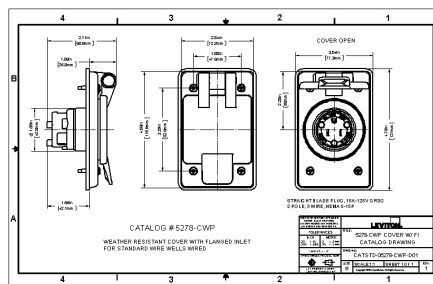
NOM : 057

UL498 : File E13393

Wiring Diagram



Dimensional Drawing



SPECIFICATION SUBMITTAL

JOB NAME: <input type="text"/>	CATALOG NUMBERS: <input type="text"/>	<input type="text"/>
JOB NUMBER: <input type="text"/>	<input type="text"/>	<input type="text"/>

Leviton Manufacturing Co., Inc

201 North Service Road, Melville, NY 11747

Telephone: +1-800-323-8920 · FAX: +1-800-832-9538 · Tech Line (8:30AM-7:30PM E.S.
T. Monday-Friday): +1-800-824-3005

Leviton Manufacturing of Canada, Ltd.

165 Hymus Boulevard, Pointe Claire, Quebec H9R 1E9 · Telephone: +1-800-461-2002 ·
FAX: +1-800-824-3005 ·

Leviton S. de R.L. de C.V.

Lago Tana 43, Mexico DF, Mexico CP 11290 · Tel.: (+52)55-5082-1040 · FAX: (+52)
5386- 1797 ·

Visit our Website at: www.leviton.com

© 2026 Leviton Manufacturing Co., Inc. All Rights Reserved. Subject to change without
notice.

Leviton has a global presence.

If you would like to know where your local Leviton office is located please go to:
www.leviton.com/company/about-leviton/locations

© 2026 Leviton Manufacturing Co., Inc.