

FIRE DEPT CONNECTIONS

FLUSH STRAIGHT PATTERN INLET CONNECTIONS



Flush mount double clapper fire department connection.

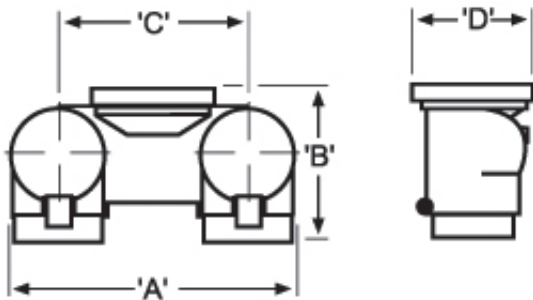
Double clapper design ensures water supply from supplementary source from either one or two servicing hoses. Inlet Connection allows in excess of 500 G.P.M. supplementary water supply for fire protection system.

- 4" Grooved Outlet
- 3" Dual NPT inlet with drop clappers
- Rated Working Pressure: 250 psi

6510260: 2 way straight pattern body 4" grooved outlet x 2-1/2" (F) NST

6510260C: 2 way straight pattern body 4" grooved outlet x 2-1/2" (F) NST complete (includes snoots, plugs, wallplate: "AUTO SPRINKLER")

FINISH: CAST BRASS



4" x 2-1/2" x 2-1/2"

A	10-1/2" (265.7 mm)
B	7-3/8" (187.3 mm)
C	7" (177.8 mm)
D	5-1/8" (130.2 mm)



FLUSH 90° PATTERN INLET CONNECTIONS

Flush mount double clapper fire department connection.

Double clapper design ensures water supply from supplementary source from either one or two servicing hoses. Inlet Connection allows in excess of 500 G.P.M. supplementary water supply for fire protection system.

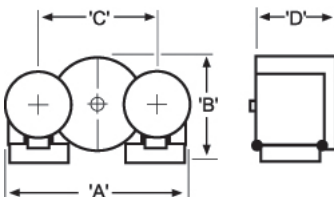
Angle body and field adjustable clappers allow for a top or bottom inlet.

- 4" Grooved Outlet
- 3" Dual NPT inlet with drop clappers
- Rated Working Pressure: 250 psi

6510265: 2 way 90° pattern body 4" grooved outlet x 2-1/2" (F) NST

6510265C: 2 way 90° pattern body 4" grooved outlet x 2-1/2" (F) NST complete (includes snoots, plugs, wallplate: "AUTO SPRINKLER")

FINISH: CAST BRASS



4" x 2-1/2" x 2-1/2"

A	11" (279.4 mm)
B	7-1/8" (181 mm)
C	7" (177.8 mm)
D	5.37" (136.4 mm)



System No.		Location		Spec Section		Paragraph	
Submitted By		Date		Approved		Date	