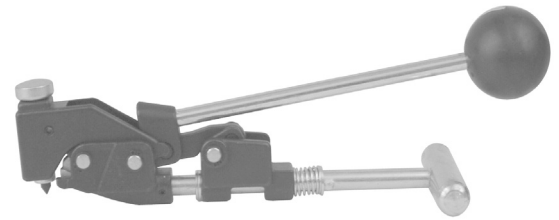




F1

Jack-type tool

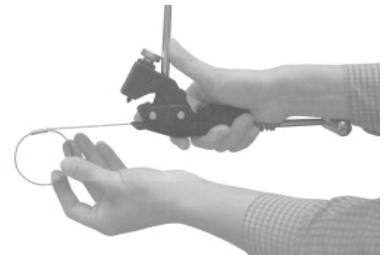
For applying 5/8" width band clamps



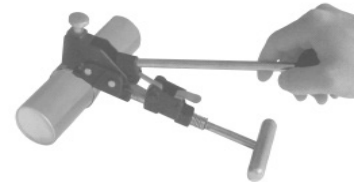
Operating Instruction for the F1 Installation Tool

1

Push tension handle all the way forward. Insert the clamp tail and push all the way into tool.

**2**

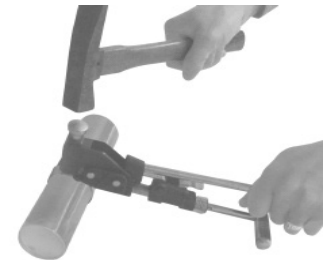
Tighten the clamp with short downward strokes. Tension handle should be in down position at completion of tightening clamp.



If clamp tension needs to be released before locking, move slide back against spring. This raises the pulling dog.

3

Holding tension handle down, lock clamp by hitting punch at least twice with mallet.

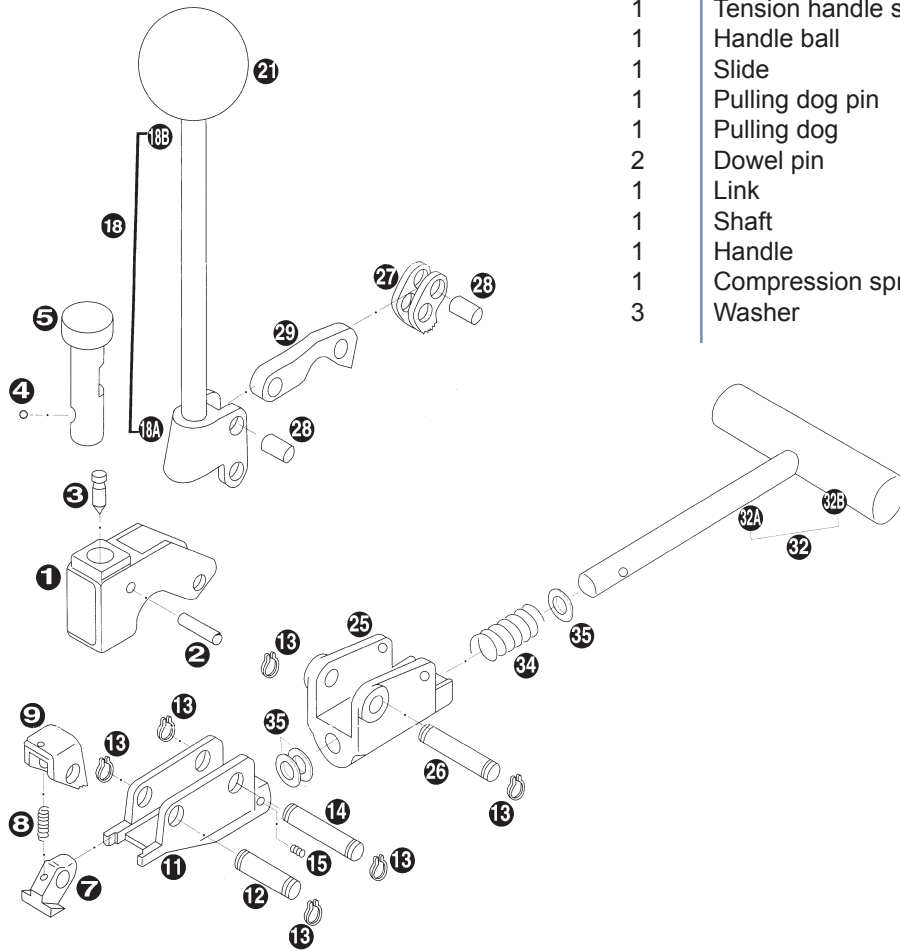
**4**

Hold hose and raise the tool back and forth to break off clamp tail. Remove from tool by operating tension handle. When tail has moved through holding dog, raise tension handle and pull tail free.



Part Identification for the F1 Installation Tool

Qty Per Tool	Part Description	Item #	Part #
1	Head	1	FI201
1	Spring pin	2	FI203
1	Punch	3	FI202
1	Retaining ball	4	FI205
1	Punch holder	5	FI204
1	Pusher nose	7	FI206
1	Spring	8	FI209
1	Holding dog	9	FI207
1	Nose	11	FI231
1	Holding dog pin	12	FI233
6	Retaining ring	13	FI232
1	Head pivot pin	14	FI233
1	Set screw	15	FI250
1	Tension handle assembly	18	FI220I
1	Tension handle shaft <i>only</i>	18B	FA222
1	Handle ball	21	FA221
1	Slide	25	FA228
1	Pulling dog pin	26	FI233
1	Pulling dog	27	FI214
2	Dowel pin	28	FI213
1	Link	29	F211
1	Shaft	32A	FA232
1	Handle	32B	FA233
1	Compression spring	34	FI245
3	Washer	35	F223



Dixon Valve & Coupling Co.

800 High Street

Chestertown, MD 21620

877.963.4966

Fax: 800.283.4966

www.dixonvalve.com