

# CPVC PIPE HANGER SUPPORT DOUBLE OFFSET DESIGN



Hanger & surge restraint for horizontal CPVC piping when installed on supporting structure

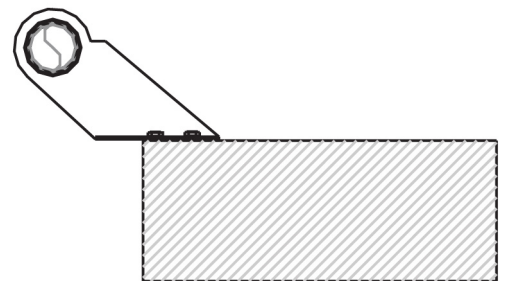
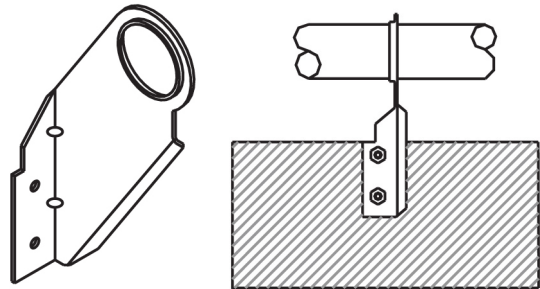
- For mounting CPVC pipe to wood
- Flared edges help protect CPVC
- Galvanized steel construction
- Supplied with #10 hex head cap screws
- Complies with the static load requirements of NFPA® 13
- Suitable for fire protection installations
- Size Range: 3/4" through 1"

Designed to mount CPVC pipe horizontally or vertically to wood or composite wood joists with a minimum 3/8" thickness.

Offset edge eliminates abrasion.

Installation: Per NFPA 13, 13R and 13D.  
Install into wood or steel.  
Slides onto CPVC pipe.

3/4" pipe size | Item #2530181-3/4  
1" pipe size | Item #2530181-1



System No.		Location		Spec Section		Paragraph	
Submitted By		Date		Approved		Date	