

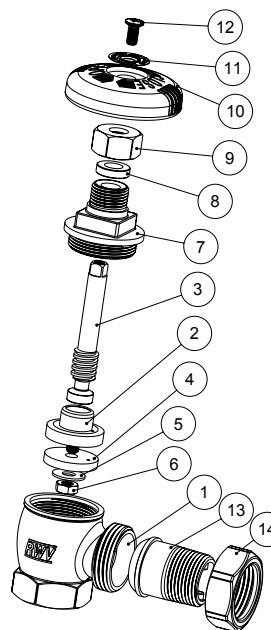
Feature

- 60# WOG
- Brass Body & Disc
- Vented Disc
- FNPT x Male Union Ends
- Phenolic Resin Handwheel



Material

	Part	Material	Specification
1	Body	Brass	B283 C37700
2	Shutter	Brass	B283 C37700
3	Stem	Brass	B283 C37700
4	Seat Gasket	EPDM Perox	-
5	Washer	Steel / Zn plated	A36
6	Nut	Brass	B283 C37700
7	Bonnet	Brass	B283 C37700
8	Packing Ring	PTFE	PTFE
9	Packing Nut	Brass	B283 C37700
10	Handwheel	Phenolic Resin	-
11	Disk	Aluminum	-
12	Screw	Steel / Zn plated	A36
13	Tailpiece	Brass	B283 C37700
14	Union Nut	Brass	B283 C37700



Dimension

Size	1/2	3/4	1	1-1/4	1-1/2
A	4.04	4.19	4.45	4.66	5.34
H	3.00	3.09	3.28	3.25	3.74
L	2.23	2.69	2.95	3.50	3.75
P	0.50	0.77	0.98	1.18	1.50
C	0.67	0.67	0.69	0.77	0.79
C1	0.63	0.71	0.91	1.00	0.98
Wt.	0.85	1.15	1.40	1.98	3.28

