

**Feature**

- Primary/secondary loop purge TEE
- Used for hydraulic separation
- Ball valve placed between 2 closely spaced TEEs
- 600# WOG
- DZR lead free brass body
- Full port design
- Chrome plated ball
- Adjustable packing gland
- Solder connections
- Virgin PTFE seats
- Blow-out proof stem

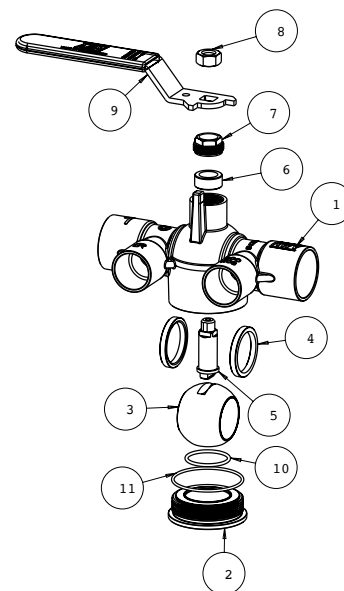


**Working conditions:**

- Water: from 15°F to 260°F
- below 32°F only for water with added antifreezing fluids
- over 212°F only for water with added anti-boiling fluids

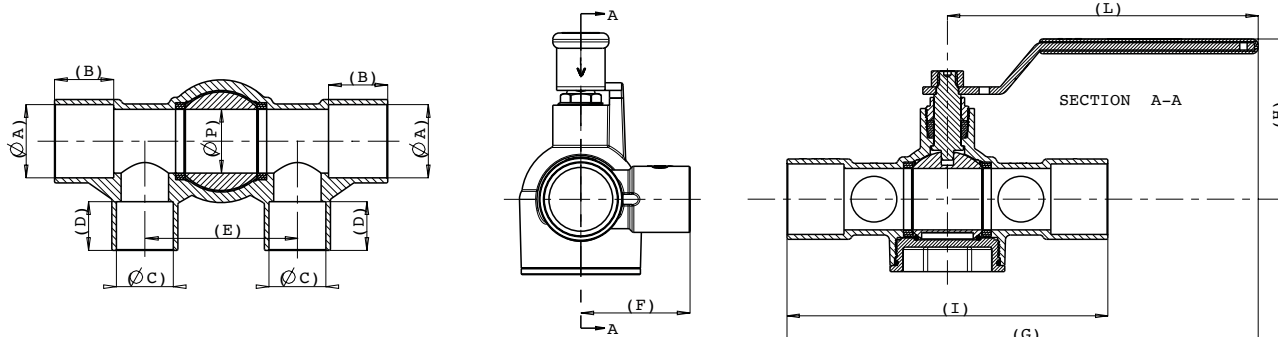
**Material**

Part	Material	Specification
1	Body	DZR Lead Free Brass ASTM B30 C87850
2	Ring nut	DZR Lead Free Brass ASTM B927 C27453
3	Ball	LF Brass / Cr plated ASTM B927 C27450
4	Seat	PTFE
5	Stem	DZR Brass ASTM B927 C27453
6	Packing ring	PTFE TF1502
7	Packing nut	Brass ASTM B124 C37700
8	Nut	Steel / Zn plated ASTM A36
9	Handle	Steel / Dacromet® plated ASTM A36
10	O-ring	EPDM Perox 70SH NSF approved
11	O-ring	EPDM Perox 70SH NSF approved



**Dimension, Weight**

Part #	Size	φA [in]	B [in]	Branch [in]	φC [in]	D [in]	E [in]	F [in]	G [in]	H [in]	I [in]	L [in]	φP [in]	Wt. [lb]
8000S 100S075S	1"	1.128 - 1.131	0.91	¾"	0.877 - 0.881	0.75	2.35	1.68	7.55	2.57	5.14	4.98	0.98	1.54
8000S 100S100S	1"	1.128 - 1.131	0.91	1"	1.128 - 1.131	0.91	2.60	1.85	7.85	2.57	5.75	4.98	0.98	1.68
8000S 125S075S	1¼"	1.377 - 1.381	0.98	¾"	0.877 - 0.881	0.75	2.68	1.81	7.78	2.74	5.59	4.98	1.23	1.87
8000S 125S100S	1¼"	1.377 - 1.381	0.98	1"	1.128 - 1.131	0.91	2.93	1.97	7.99	2.74	6.02	4.98	1.23	2.00
8000S 125S125S	1¼"	1.377 - 1.381	0.98	1¼"	1.377 - 1.381	0.98	3.11	1.97	8.25	2.74	6.54	4.98	1.23	2.09
8000S 150S125S	1½"	1.628 - 1.632	1.09	1¼"	1.377 - 1.381	0.98	3.43	2.09	9.12	3.15	7.09	5.57	1.47	3.13
8000S 150S150S	1½"	1.628 - 1.632	1.09	1½"	1.628 - 1.632	1.09	3.82	2.19	9.51	3.15	7.87	5.57	1.47	3.35
8000S 200S150S	2"	2.128 - 2.132	1.34	1½"	1.628 - 1.632	1.09	4.21	2.56	9.98	3.51	8.82	5.57	1.95	4.89
8000S 200S200S	2"	2.128 - 2.132	1.34	2"	2.128 - 2.132	1.34	4.69	2.82	10.5	3.51	9.84	5.57	1.95	5.33



**Feature**

- Primary/secondary loop purge TEE
- Used for hydraulic separation
- Ball valve placed between 2 closely spaced TEEs
- 250# WOG
- DZR lead free brass body
- Full port design
- Chrome plated ball
- Adjustable packing gland
- EzPress connections
- Virgin PTFE seats
- Blow-out proof stem

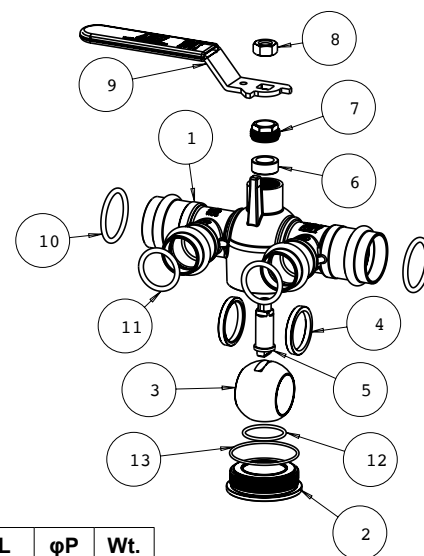


**Working conditions:**

- Water: from 15°F to 260°F
- below 32°F only for water with added antifreezing fluids
- over 212°F only for water with added anti-boiling fluids

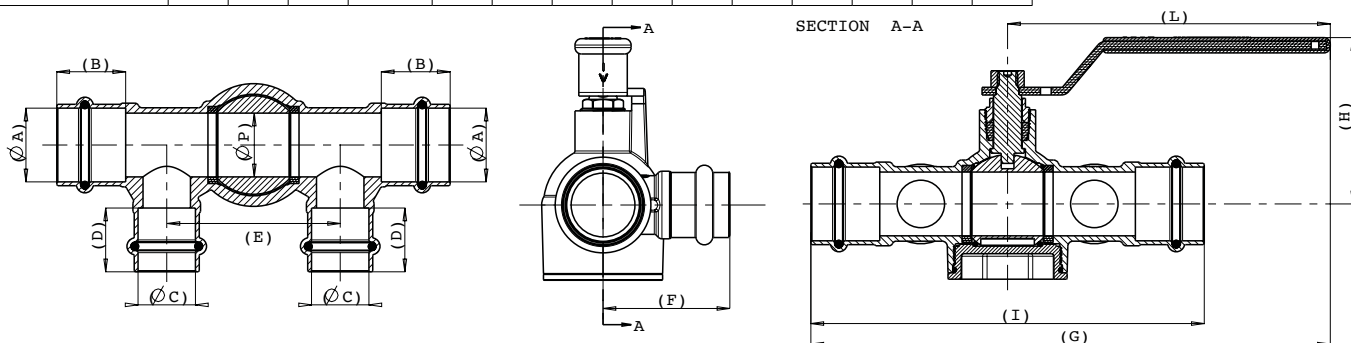
**Material**

Part	Material	Specification	
1	Body	DZR Brass ASTM B30 C87850	
2	Ring nut	DZR Brass ASTM B927 C27453	
3	Ball	LF Brass / Cr plated ASTM B927 C27450	
4	Seat	PTFE	
5	Stem	DZR Brass ASTM B927 C27453	
6	Packing ring	PTFE	
7	Packing nut	Brass ASTM B124 C37700	
8	Nut	Steel / Zn plated ASTM A36	
9	Handle	Steel / Dacromet® plated ASTM A36	
10	O-ring	EPDM Pero	NSF approved
11	O-ring	EPDM Perox	NSF approved
12	O-ring	EPDM Perox 70SH	NSF approved
13	O-ring	EPDM Perox 70SH	NSF approved



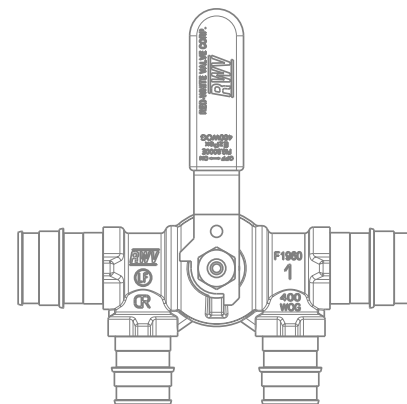
**Dimension, Weight**

Part #	Size	φA [in]	B [in]	Branch [in]	φC [in]	D [in]	E [in]	F [in]	G [in]	H [in]	I [in]	L [in]	φP [in]	Wt. [lb]
8000P 100P075P	1"	1.14	1.06	¾"	0.89	0.98	2.68	1.96	8.01	2.57	6.07	4.98	0.98	1.66
8000P 100P100P	1"	1.14	1.06	1"	1.14	1.06	2.68	2.03	8.14	2.57	6.32	4.98	0.98	1.74
8000P 125P075P	1¼"	1.39	1.06	¾"	0.89	0.98	2.68	2.14	8.06	2.74	6.17	4.98	1.23	2.00
8000P 125P100P	1¼"	1.39	1.06	1"	1.14	1.06	3.19	2.22	8.44	2.74	6.93	4.98	1.23	2.15
8000P 125P125P	1¼"	1.39	1.06	1¼"	1.39	1.06	3.19	2.26	8.58	2.74	7.20	4.98	1.23	2.26
8000P 150P125P	1½"	1.64	1.26	1¼"	1.39	1.06	3.82	2.44	9.78	3.15	8.43	5.57	1.47	3.49
8000P 150P150P	1½"	1.64	1.26	1½"	1.64	1.26	3.82	2.56	9.90	3.15	8.66	5.57	1.47	3.72
8000P 200P150P	2"	2.14	1.52	1½"	1.64	1.26	4.49	2.95	10.4	3.51	9.61	5.57	1.95	5.24
8000P 200P200P	2"	2.14	1.52	2"	2.14	1.52	4.73	3.15	10.7	3.51	10.2	5.57	1.95	5.52



**Feature**

- Primary/secondary loop purge TEE
- Used for hydraulic separation
- Ball valve placed between 2 closely spaced TEEs
- 400# WOG
- DZR lead free brass body
- Full port design
- Chrome plated ball
- Adjustable packing gland
- PEX ASTM F1960 connections
- Virgin PTFE seats
- Blow-out proof stem

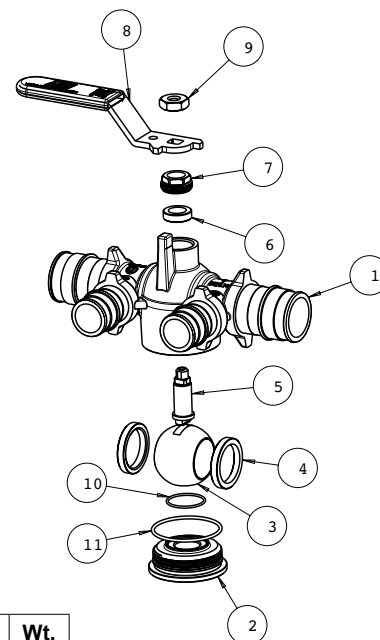


**Working conditions:**

- Water: from 15°F to 260°F
- below 32°F only for water with added antifreezing fluids
- over 212°F only for water with added anti-boiling fluids

**Material**

Part #	Part	Material	Specification
1	Body	DZR Brass	ASTM B30 C87850
2	Ring nut	DZR Brass	ASTM B927 C27453
3	Ball	DZR LF Brass / Cr plated	ASTM B927 C27453
4	Seat	PTFE	-
5	Stem	DZR Brass	ASTM B927 C27453
6	Packing ring	PTFE	-
7	Packing nut	Brass	ASTM B124 C37700
8	Nut	Steel / Zn plated	ASTM A36
9	Handle	Steel / Dacromet® plated	ASTM A36
10	O-ring	EPDM Perox 70SH	NSF approved
11	O-ring	EPDM Perox 70SH	NSF approved



**Dimension, Weight**

Part #	Size	φA [in]	Branch [in]	φB [in]	C [in]	D [in]	E [in]	F [in]	H [in]	L [in]	Wt. [lb]
8000E 100E075E	1"	PEX F1960	¾"	PEX F1960	2.05	1.89	6.36	5.51	2.26	3.60	1.29
8000E 100E100E	1"	PEX F1960	1"	PEX F1960	2.28	2.28	6.57	5.94	2.26	3.60	1.47

